



ACTION COLOUR PHOTO
BY PHOTOCROM CELESQUE PROCESS

The 24th Annual Band Contest

being the 29th Anniversary of the
GREAT NATIONAL BAND FESTIVAL

Programme & Souvenir
of the
CRYSTAL PALACE

6^d

CRYSTAL PALACE BAND CONTEST!!

REGAL RECORDS

26

The Championship Test Piece:
"VICTORY" (Cyril Jenkins)

will be issued

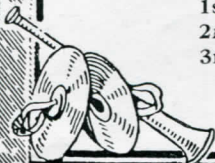
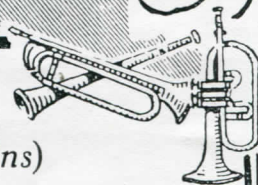
FIRST on REGAL Records

Order it to-day!

PREVIOUS PRIZE WINNERS ON REGAL RECORDS:

- 1928.—"A MOORSIDE SUITE"
2nd Prize Winners—HARTON COLLIERY BAND
- 1927.—"THE WHITE RIDER"
1st Prize Winners—CARLISLE ST. STEPHEN'S BAND
- 1926.—"AN EPIC SYMPHONY"
1st Prize Winners—ST. HILDA COLLIERY BAND
- 1925.—Overture, "JOAN OF ARC"
1st Prize Winners—MARSDEN COLLIERY BAND
- 1924.—Rhapsody, "ON THE CORNISH COAST"
1st Prize Winners—ST. HILDA COLLIERY BAND
3rd Prize Winners—NEWCASTLE (N.S.W.) WORKS BAND
- 1923.—Overture, "OLIVER CROMWELL"
1st Prize Winners—LUTON RED CROSS BAND
2nd Prize Winners—BLACK DYKE MILLS BAND
3rd Prize Winners—FODEN MOTOR WORKS BAND

REGAL—always REGAL!





CRYSTAL PALACE

HENRY JAMES BUCKLAND - - - General Manager

THE
29th Anniversary of
the Great National
BAND FESTIVAL

(Being the Twenty-Fourth Band Contest)

SEPTEMBER 28th

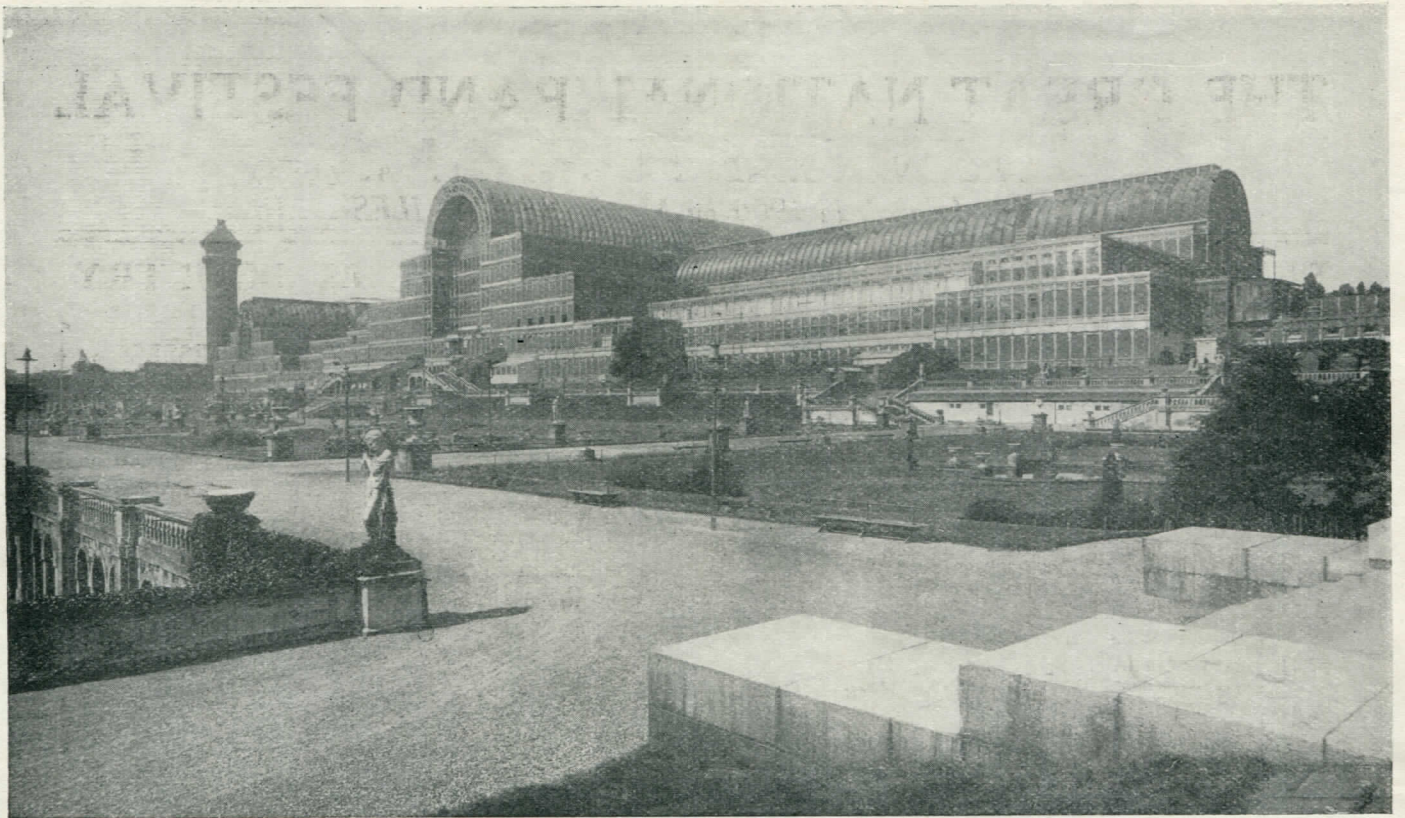
1 9 2 9

Under the Gracious Patronage of
HIS MAJESTY THE KING

Director and Founder - - -

Mr. J. HENRY ILES
(Officier d'Academie Francaise)

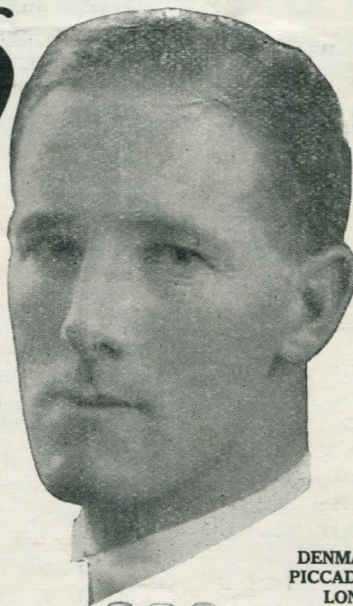
COPYRIGHT PUBLICATION
BY THE
PHOTOCHROM CO., LTD.
80 FLEET STREET, LONDON, E.C. 4



CRYSTAL PALACE FROM S.E.

HAWKES

Jack Mackintosh
 Britain's greatest
 Cornettist
 Plays a
 Brilliant Bore
 Clippertone



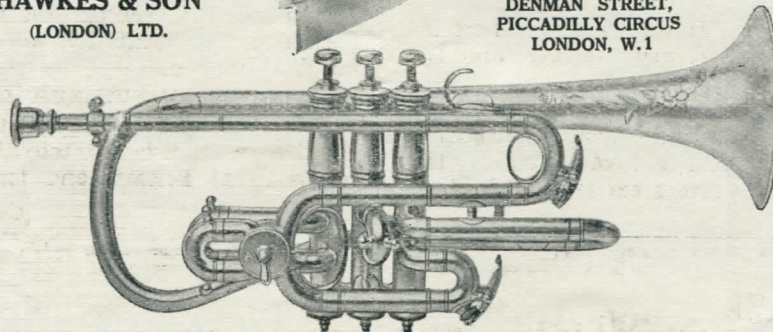
HAWKES

"The Clippertone"
 is Britain's Best
 Cornet
 Play it.
 Your success
 is assured

HAWKES & SON
 (LONDON) LTD.

DENMAN STREET,
 PICCADILLY CIRCUS
 LONDON, W.1

VISIT
 HAWKES'
 STAND
 To-day
 SPECIAL
 C.P.
 CONTEST
 PRICES



200
 HAWKES
 KOSIKUP
 CORNET
 MOUTHPIECES
 SPECIAL
 Half-Price
 OFFER
 5/- each

THE GREAT NATIONAL BAND FESTIVAL

THE NATIONAL BAND FESTIVAL

was founded in 1900 by Mr. J. HENRY ILES

THE ROMANCE AND GLAMOUR OF THE CRYSTAL PALACE

THE Palace, within its immense, glistening fabric, abounds with interests, some quaint, some informative; but worthy of examination every one.

The magnificent Courts—Egyptian, Greek, Roman, Byzantine, Alhambra, Renaissance, etc., deserve days for their proper appreciation.

See the lions which guard the entrance to the Egyptian Court, replicas of a pair brought from Egypt by an English Duke; see also the colossal figures of Rameses, and the wondrous Temple of Karnak in miniature.

Pass through the Greek and the Roman Courts and note the reproduction of gems of sculpture contained therein—works that have never been surpassed, and possibly never will be.

Feast your eyes upon the wonders of the Alhambra Court, with its beautiful arabesques in coloured stucco, see the Byzantine Court opposite, and then revel in the charm and beauty of the Renaissance Court, and enjoy the many interesting objects in the English Mediæval Court, notably the magnificent doorway from Rochester Cathedral.

One can roam around the Palace and find plenty to interest and amuse. The grounds are filled with things that delight the inquisitive mind and the seeker after amusement, whilst the building itself is filled with objects that stimulate the imagination and quicken thought. It is a storehouse of scientific knowledge, so arranged that the least scientific among us may in measure interpret and appreciate the beauty of it.

Saunter through the South Nave to the handsome Crystal Fountain, with its beautiful setting of palms, ferns, flowers and charming festoons of the rhus climber.

Look up at the big clock—with its prodigious dial, forty feet in diameter—the place of assignation of friends and lovers innumerable, and then pass into the beautiful grounds among the stately terraces and statuary.

One never need be dull at the Palace. There is boating, football, tennis in plenty, merry-go-rounds, swings and an intriguing maze.

On the special track on the football ground you may enjoy the thrill of dirt track racing. Outboard motor boat racing on the new lake in the North Tower Gardens provides further excitement in the early evening.

C. J. V.

THE WORLD'S POULTRY CONGRESS

WORLD'S POULTRY CONGRESSES were initiated by the World's Poultry Science Association for the purpose of bringing together those concerned with the development of the poultry industry and promoting international friendship. The Congresses are triennial, the first being held in Holland in 1921, the second in Spain in 1924, the third in Canada in 1927, and the fourth is to be held in England next year.

The Crystal Palace has been chosen as the venue of this Congress, and it is difficult to conceive of any other building which could provide a more appropriate setting. It is a great National Institution, magnificent in its conception, and with a rich collection of historical art treasures drawn from many countries. It has been the centre for years past of a world-famous annual competitive poultry display. It stands in extensive and beautiful grounds, occupying a commanding position on the Sydenham heights, at the gateway of London, the heart of the British Empire, and one of the greatest cities of the world.

The Congress is being organised by the English Ministry of Agriculture and Fisheries, in conjunction with the Department of Agriculture for Scotland and the Ministry of Agriculture for Northern Ireland. It will be held under the distinguished patronage of His Majesty the King, Her Majesty the Queen, and His Royal Highness the Prince of Wales. His Majesty the King has graciously expressed the hope that he will be associated in some form with the Congress. Thirty-four countries have already intimated their intention to co-operate, and over three thousand delegates are expected to attend.

The Government will utilise the occasion, both for the encouragement of poultry and small stock breeding, and for the promotion of national interests, which will appeal to a vast number of people in this country and visitors from abroad. The Congress may be regarded as an important National event, in which it is expected that interests outside the poultry industry will participate. On this account there has been a specially keen demand for space in the Trade Section of the Exhibition, where there are facilities for displaying national industries, as well as those immediately connected with the poultry industry.

It is also expected that many overseas visitors to the Congress will be attracted by the opportunity of seeing Great Britain, and for those who are not

[Continued on page 18]

With their usual enterprise, the National Sunday League have arranged for the Band winning the Championship and Thousand Guinea Trophy to play on Sunday September 29th, 1929, at the Finsbury Park Empire.

Besson "Prototype" — THE WORLD'S BEST BAND INSTRUMENTS

ADJUDICATORS' NOTES ON THE PLAYING

See Next Saturday's

"BRITISH BANDSMAN"

THE BRITISH BANDSMAN
ON SALE AT ALL NEWSAGENTS

Price **3d.**

"SOUTHERN SCHOOLS"

.....

Parents requiring information should get a copy of this new 228-page finely illustrated guide to Schools in Southern England, France, Belgium and Switzerland.

By S. P. B. MAIS, M.A., OXON

Sometime Master at Sherborne and Tonbridge

.....

Write or call at "Southern Railway Publications (Advertising)," Victoria Station, S.W.1, for free copy (by post 6d.). Obtainable also at principal Stations and Enquiry Offices of the

SOUTHERN RAILWAY



THE MOB CAP

(PHOTOCHROM COPYRIGHT)



EVANS UNIFORMS

The Oldest Original Firm

UNBEATABLE VALUE—FIT—WORKMANSHIP
COMPLETE SATISFACTION GUARANTEED

Present Contractors to :

Foden's Motor Works Band
Wingates Temperance Band
Horwich R.M.I. Band
Harton Colliery Band
Marsden Colliery Band
Hebden Bridge Band
Crosfield's Works Band
Glazebury Prize Band
Creswell Colliery Band
Hasland Silver Band
South Moor Colliery Band
Dove Holes Band
Adamson Military Band

Royal Oakeley Silver Band
St. Dennis Silver Prize Band
Stenalees Silver Band
British Legion H.Q. Band
Govan Burgh Band
Edenderry B. & R. Band
Callenders Cable Wks. Band
Hanwell Silver Prize Band
Highgate Silver Band
Crystal Palace Band
Chislet Colliery Band
Gt. Central & Met. Band
Edmonton Silver Band

etc. etc. etc.

Samples and Coloured Catalogue, Carriage Paid
REPRESENTATIVE TO MEASURE, FREE OF CHARGE

THE
UNIFORM CLOTHING & EQUIPMENT Co., Ltd.
10, 11 CLERKENWELL GREEN, LONDON, E.C. 1.

Telephones { CLERKENWELL 6682
5226
PENDLETON 144
GLASGOW CENTRAL 519

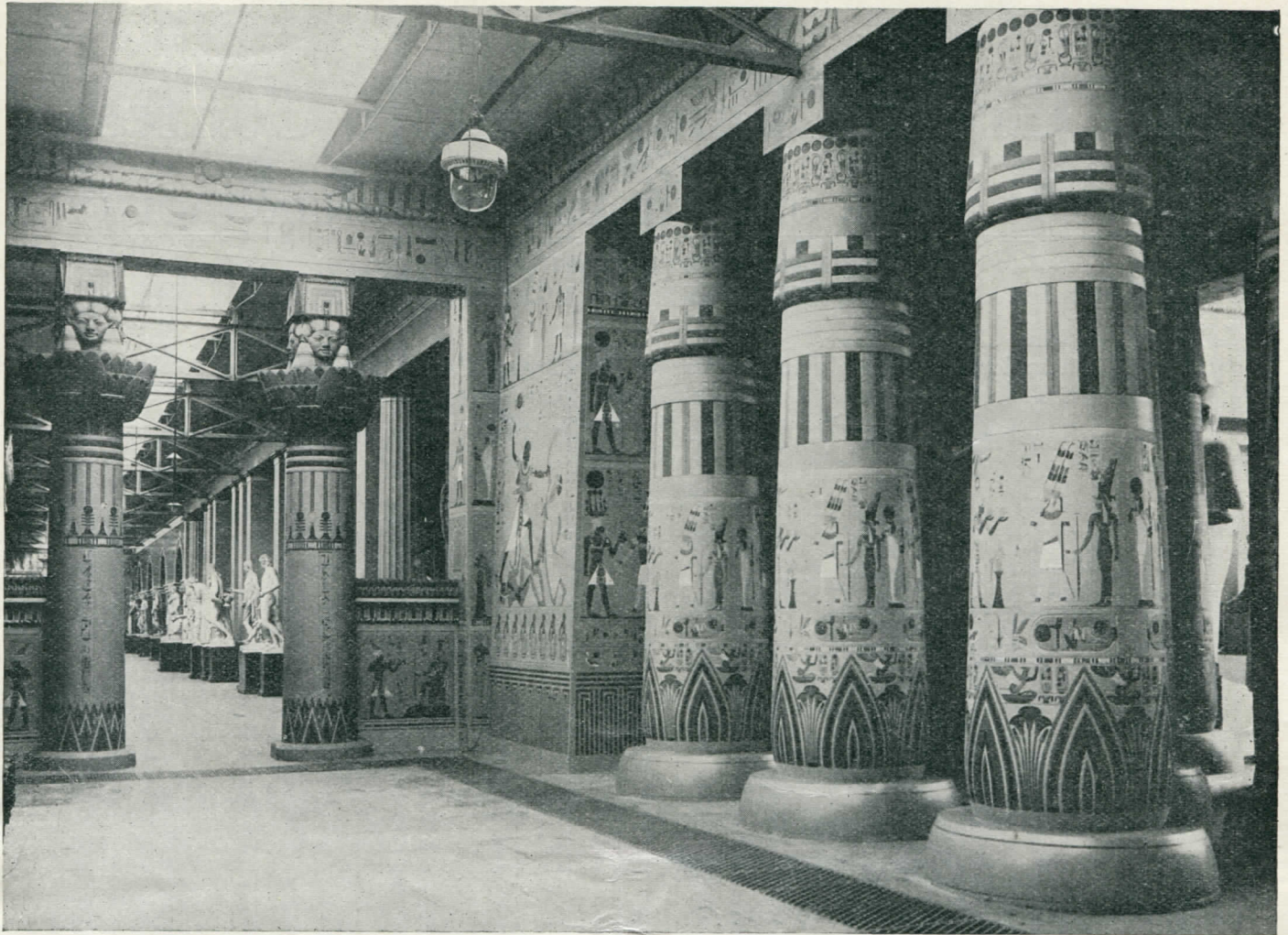
Telegrams :
"UNIQUP, LONDON."

Northern Representative—Mr. J. CLARKSON,
47 Barrfield Road, Pendleton, Manchester.

LIST OF EXHIBITORS IN SOUTH NAVE

- BESSON & Co., LTD., 196/8 Euston Road, London, N.W. 1.
BEEVER'S, 26 Aldermanbury, London, E.C. 2.
BOOSEY & Co., 295 Regent Street, London, W. 1.
BOSWORTH & Co., 8 Heddon Street, London, W.
W. BROWN & SONS, 323 Kennington Road, S.E. 11.
CAMPBELL CONNELLY & Co., 10 Denmark Street, London, W.C. 2.
B. FELDMAN & Co., 125/129 Shaftesbury Avenue, London, W.C. 2.
HAWKES & SON, Denman St., Piccadilly, London, W. 1.
J. P. HULL, 36 Rathbone Place, Oxford Street, W.
KEECH LTD., 6, 7 & 8 Old Bond Street, London, W. 1.
KEITH PROWSE & Co., LTD., 159 New Bond Street, London, W. 1.
LAWBACK BROS., 1 Hawley Road, Kentish Town, N.W. 1.
THE LAWRENCE WRIGHT MUSIC Co. LTD., Denmark Street, Charing Cross, W.C. 2.
W. PARTRIDGE & Co., 175 Clapham Road, S.W. 9.
PAXMAN BROS., 156 Shaftesbury Av., London, W.C. 2.
A. M. PHILPOT, 354 Beech Hill, Luton, Beds.
A. REYNOLDS, 138 Chester Road, Manchester.
T. REYNOLDS, SENR. & SON, 43 Chapel Street, Salford, Manchester.
RUDALL CARTE & Co. LTD., 23 Berners Street, W. 1.
P. TOMKINS & SON, 20 Ethel Street, Northampton.
UNIFORM CLOTHING & EQUIPMENT Co., LTD., 10/11 Clerkenwell Green, London, E.C. 1.

Besson "Prototype" — THE WORLD'S BEST BAND INSTRUMENTS



CRYSTAL PALACE, COLUMNS OF THE TEMPLE OF KARNAK. EGYPTIAN COURT.

The Mecca Cafes

CATERERS BY APPOINTMENT TO THE CRYSTAL PALACE

Head Offices, Stores, etc.: **76 SOUTHWARK STREET, S.E. 1**

LONDON:—CAFES AND RESTAURANTS

54 Gresham Street
Telegraph Street.
101 Leadenhall Street.
145 Cannon Street.
Broad Street.
14 Walbrook.
49 London Wall.

50 51 Fore Street.
31 Great St. Helens.
75b Queen Victoria Street.
3 Gresham Street.
9/10 Mark Lane.
23 Coleman Street.
67b Shaftesbury Avenue.

1 Whittington Avenue.
69/70 Mark Lane.
139 Cannon Street.
King's Arms Yard.
140 Cheapside.
24 Lime Street.
21 St. Mary Axa.

15 Copthall Avenue.
68 Basinghall Street.
56 Ludgate Hill.
11a Queen Street.
11/12 Blomfield Street.
65/6 Chancery Lane.
143 Charing Cross Road.
57 Gracechurch Street

PROVINCES

BIRMINGHAM

The Station Street Cafe,
Station Street.
The Kings Cafe,
Midland Arcade, New Street.
The Mecca Cafe,
Waterloo Street.
The Cafe Royal,
Prudential Buildings,
Corporation Street.

HULL

The Mecca Cafe,
Prudential Buildings,
King Edward Street,

CAMBRIDGE

The Mecca Cafe,
Petty Cury.

SHEFFIELD

The Haymarket Hotel,
Haymarket.

LIVERPOOL

The Cotton Exchange Cafe
Ormond Street.
The Mecca Cafe,
6 Drury Lane.
The Exchange Cafe,
Exchange Flags.
The Mecca Cafe,
Clayton Square.

BRIGHTON

The Mecca Cafe,
105 King's Road.

BRIDLINGTON

The Mecca Cafe,
8/9 Garrison Street.

MANCHESTER

The Mecca Cafe, 37 Cross Street.

ST. ALBANS

The Mecca Cafe, Market Place.

TUNBRIDGE WELLS

The Mecca Cafe,
44/46 The Pantiles.

HOTELS. THE ROOF GARDEN HOTEL, John Bright Street, BIRMINGHAM.

THE HAYMARKET HOTEL, King Street, SHEFFIELD

SOLE CATERERS AT SHERRY'S DANCE HALL, BRIGHTON, AND ROYAL OPERA HOUSE DANCES, COVENT GARDEN

The Great Championship Contest

for the

CRYSTAL PALACE ONE THOUSAND GUINEA TROPHY

LAST YEAR'S WINNER BLACK DYKE MILLS BAND

1.0 p.m.—In the Concert Hall

Grand Championship Brass Band Contest for the Crystal Palace One Thousand Guinea Challenge Trophy and the "Daily Telegraph" Challenge Cup, and other Prizes

Adjudicators:—Mr. HAVERGAL BRIAN
Mr. CYRIL JENKINS
Dr. THOMAS KEIGHLEY

PRIZES

FIRST PRIZE.—The Championship of Great Britain and the Colonies, the winners of which will be the holders for the year (under special regulations) of the CRYSTAL PALACE NATIONAL CHALLENGE TROPHY, of the value of One Thousand Guineas, and a CASH PRIZE OF FIFTY POUNDS, and Messrs. HAWKES & SON, Denman Street, Piccadilly, London, W. 1, will present one "Artist's Perfected" Trombone, special exhibition finish, gold-plated all over, fitted complete in the new Model H.S. solid leather case, valued at TWENTY-EIGHT POUNDS, TEN SHILLINGS.

Each Member of the Band, including the Bandmaster and Secretary, will also be presented with the CRYSTAL PALACE CHAMPIONSHIP BRONZE MEDAL, with Bar and Clasp.

Members of the Band winning the Trophy for the second time will be presented with the same medal IN SOLID SILVER; and Members of the Band winning the Trophy for the third time will be presented with SOLID GOLD MEDALS.

SECOND PRIZE.—THE DAILY TELEGRAPH CHALLENGE CUP (subject to regulations), value Fifty Guineas, and a CASH PRIZE OF FORTY-FIVE POUNDS, and Messrs. W. BROWN & SONS, 323 Kennington Road, London, S.E. 11, will present one engraved gold-plated Bb Cornet in Leather Case, entire British manufacture, valued at TWENTY-FOUR POUNDS TEN SHILLINGS.

THIRD PRIZE.—A CASH PRIZE OF FORTY POUNDS, and Messrs. KEECH, LTD., 6, 7 & 8 Old Bond Street, London, W. 1, will present one "York" Eb Tenor Horn, heavily silver-plated, with burnished points, gold inside bell, pearl inlaid valve tops, complete with gold-plated mouthpiece, lyre, valve cleaner and low pitch slide, in case with nickel clasp and lock, valued at TWENTY-TWO GUINEAS.

FOURTH PRIZE.—A CASH PRIZE OF THIRTY-FIVE POUNDS, and Messrs. BESSON & Co., LTD., 196/8 Euston Road, London, N.W. 1, sole manufacturers of the celebrated "Prototype" Instruments, will present one of their famous "New Standard" Tenor Slide Trombones, handsomely silver-plated and embellished, complete in attaché case, valued at TWENTY-ONE GUINEAS.

FIFTH PRIZE.—A CASH PRIZE OF THIRTY POUNDS, and Messrs. BOOSEY & Co., LTD., 295 Regent Street, London, W. 1, will present one N.V.A. Cornet (Contesting Model), triply silver-plated and engraved, with gilt wreath and bell, in best leather attaché style case complete, valued at EIGHTEEN POUNDS.

SIXTH PRIZE.—A CASH PRIZE OF TEN POUNDS, and Messrs. RUDALL, CARTE & Co., LTD., 23 Berners Street, Oxford Street, W. 1, will present one Silver Bb Cornet, with double water keys and case, valued at SEVENTEEN POUNDS FOURTEEN SHILLINGS.

1. CHAMPIONSHIP CONTEST

TEST PIECE: TONE POEM - "VICTORY" - C. Jenkins

Specially Composed for this Festival and published by R. SMITH & CO., LTD., 210 Strand, London, W.C. 2

| No. | Band | Conductor | Draw | Result | No. | Band | Conductor | Draw | Result |
|-----|-----------------------------|-----------------|------|--------|-----|---------------------------------|-----------------|------|--------|
| 1. | Black Dyke Mills | W. Halliwell | ... | ... | 11. | Marsden Colliery | J. Boddice | ... | ... |
| 2. | Brighouse and Rastrick | F. Berry | ... | ... | 12. | Metropolitan Works (Birmingham) | W. Halliwell | ... | ... |
| 3. | Callender's Cable Works | T. Morgan | ... | 6 | 13. | Rothwell Temperance | N. Sidebottom | ... | ... |
| 4. | Carlisle St. Stephen's | W. Lowes | ... | 1 | 14. | Scottish C.W.S. | J. A. Greenwood | ... | 2 |
| 5. | Carlton Main Frickley Coll. | N. Thorpe | ... | ... | 15. | South Moor Colliery | G. Haigh | ... | ... |
| 6. | Cresswell Colliery | J. A. Greenwood | ... | ... | 16. | Sowerby Bridge | W. Halliwell | ... | 4 |
| 7. | Foden's | F. Mortimer | ... | ... | 17. | St. Dennis | C. H. Baker | ... | ... |
| 8. | Harton Colliery | W. Halliwell | ... | ... | 18. | Wingates Temperance | H. Moss | ... | 5 |
| 9. | Irwell Springs | H. Barlow | ... | ... | | | | | |
| 10. | Luton Red Cross | E. S. Carter | ... | 3 | | | | | |

Admission to Concert Hall TWO SHILLINGS

NOTE.—The Director's Office is in front of the Concert Hall. At "THE BRITISH BANDSMAN" Stand, adjoining, can be obtained the Conductor's parts of the Test Pieces—Price One Shilling.

A MUSICAL EXHIBITION
WILL BE HELD IN THE SOUTH NAVE
By all the Leading Musical Instrument
Manufacturers, etc.

See List of Exhibitors, Page 6

Besson "Prototype" — THE WORLD'S BEST BAND INSTRUMENTS

JOIN THE NEW KEITH PROWSE BRASS AND MILITARY

MILITARY
30 -
PER YR.

BAND CLUB

BRASS
20/-
PER YR.

CONSEQUENT ON THE GREAT INCREASE IN THE NUMBER OF OUR PUBLICATIONS FOR BANDS, AND IN RESPONSE TO NUMEROUS REQUESTS FROM ALL OVER THE COUNTRY WE ARE STARTING THE KEITH PROWSE MILITARY & BRASS BAND SUBSCRIPTION

RECENT STANDARD WORKS

BELLS ACROSS THE MEADOWS
VOICE OF THE BELLS
BABYLONIAN NIGHTS
Ketelbey's DEVOTION
Shaw's MELODY
The Famous Savoy MEDLEYS

Write in now for
form and
particulars of
SPECIAL OFFER
to Club Members

NEW POPULAR WORKS

WEDDING OF THE PAINTED DOLL
I FAW DOWN AN GO BOOM!
TELL ME MORE ABOUT LOVE
YOU JUST YOU
WHEN SUMMER IS GONE
ME AND THE MAN IN THE MOON

Minimum of 18 numbers a year guaranteed

"CHEAPEST AND BEST—COMPARED WITH THE REST"

THOUGH YOU MAY NOT

WIN THE CHALLENGE TROPHY

Your visit will well repay you if you spare
a few minutes to examine our display of

BRASS, WOOD-WIND & PERCUSSION INSTRUMENTS Accessories and Novelties

Everything for the Bandsman.

Unrivalled quality and value

Be sure you get a copy of our list of Contest Day Special Offers

KEITH PROWSE & CO., LTD.,

Wholesale and Instrumental Dept.
159 New Bond St., London, W. 1

Band Music Dept.
42-43 Poland St., London, W. 1

10.30 a.m.—In the Dance Hall

Brass Band Contest for the "Daily Express" Challenge Shield and "The People" Challenge Shield and other Prizes

Adjudicators:—Mr. HENRY GEEHL
Mr. BASIL WINDSOR

PRIZES

- FIRST PRIZE.**—THE *DAILY EXPRESS* CHALLENGE SHIELD (subject to regulations), value Fifty Guineas, and a CASH PRIZE OF TWENTY POUNDS, and Messrs. KEITH PROWSE & Co., LTD., 159 New Bond Street, London, W. 1, will present one Couesnon Bb Cornet, silver-plated and engraved, valued at FIFTEEN GUINEAS.
- SECOND PRIZE.**—THE *PEOPLE* CHALLENGE SHIELD (subject to regulations), and a CASH PRIZE OF FIFTEEN POUNDS, and THE UNIFORM CLOTHING & EQUIPMENT Co., LTD., 5 Clerkenwell Green, London, E.C. 1, will present one Set of Music Stands and one Set of Band Books, printed in gold or silver lettering with the name of the Band and instrumentation, valued at SEVENTEEN GUINEAS.
- THIRD PRIZE.**—A CASH PRIZE OF TWELVE POUNDS, and THE LAWRENCE WRIGHT Music Co., Denmark Street, Charing Cross Road, London, W.C. 2, will present one silver-plated "Clippertone" Cornet, valued at FIFTEEN GUINEAS.
- FOURTH PRIZE.**—A CASH PRIZE OF TEN POUNDS, and Messrs. FELDMAN AND Co., 125 Shaftesbury Avenue, London, W.C. 2, will present one Boosey Bb Cornet, N.V.A., triply silver-plated and engraved, valued at FOURTEEN GUINEAS.
- FIFTH PRIZE.**—A CASH PRIZE OF EIGHT POUNDS, and Messrs. BEEVER'S, 26 Aldermanbury, London, E.C. 2, will present one Bandmaster's Frock-coat Suit and Cap, or one Set of Band Caps, valued at TWELVE GUINEAS

2. GRAND SHIELD CONTEST

| Test Piece—SUITE ... "ZAMORA" ... | | C. Jenkins | | |
|-----------------------------------|---------------------|-----------------|-------------|---|
| No. | Band | Conductor | Draw Result | |
| 1. | Aldridge Colliery | E. T. Smith | 8 | |
| 2. | Baxendale's Works | J. Jennings | 10 | |
| 3. | Birstal Old | N. Sidebottom | 17 | |
| 4. | Bradford City | W. Halliwell | 17 | |
| 5. | Callender's Juniors | C. A. Waters | 17 | |
| 6. | Cambridge Railway | J. C. Dyson | 18 | |
| 7. | Crookhall Colliery | W. Richards | 18 | |
| 8. | Crystal Palace | W. Reynolds | 18 | 1 |
| 9. | Edmonton | W. Tyrrell | 18 | 4 |
| 10. | Hanwell | J. C. Dyson | 12 | |
| 11. | Horden Colliery | J. A. Greenwood | 26 | |
| 12. | Kettering Town | F. Mortimer | 26 | |
| 13. | Lincoln Malleable | W. Halliwell | 28 | 5 |
| 14. | Pleasley Colliery | H. Lambeth | 28 | 3 |
| 15. | Raunds Temperance | J. A. Greenwood | 29 | |
| 16. | Rushden Town | J. E. Fidler | 29 | |
| 17. | St. Pancras | F. Dimmock | 30 | |
| 18. | Seven Sisters | D. W. Morgan | 30 | |
| 19. | Stenalees | W. Adamson | 30 | |
| 20. | Wizston Temperance | C. Moore | 30 | 2 |
| 21. | Wilkesden Town | C. McManus | 30 | |
| 22. | Wolverton Town | H. Westley | 4 | |

10.30 a.m.—North Tower Gardens

Brass Band Contest for the "Daily Sketch" Challenge Cup and "The Daily News" Trophy and other Prizes

Adjudicators:—Mr. G. W. CAVE
Mr. HARRY HEYES

PRIZES

- FIRST PRIZE.**—THE *DAILY SKETCH* CHALLENGE CUP (subject to regulations), value Fifty Guineas, and a CASH PRIZE OF FIFTEEN POUNDS, and Messrs. THOMAS REYNOLDS, SENR. & SONS, 43 Chapel Street, Salford, Manchester, will present one Reynolds' Soloist engraved and silver-plated Tenor Trombone, valued at TWELVE GUINEAS.
- SECOND PRIZE.**—THE *DAILY NEWS* TROPHY (subject to regulations), and a CASH PRIZE OF TEN POUNDS, and Messrs. CAMPBELL, CONNELLY & Co., LTD., 10/11 Denmark Street, Charing Cross Road, W.C. 2, will present one Cornet, silver-plated and especially engraved, in a cowhide attaché-shaped case, made by Couesnon and Co., valued at TEN GUINEAS.
- THIRD PRIZE.**—A CASH PRIZE OF EIGHT POUNDS, and A. M. PHILPOT, Esq., 354 Beech Hill, Luton, Beds., will do repairs or silver plating, or both, to the value of SEVEN POUNDS TEN SHILLINGS.
- FOURTH PRIZE.**—A CASH PRIZE OF SEVEN POUNDS, and Messrs. A. V. REYNOLDS, LTD., 138 Chester Road, Manchester, will present one Tenor Slide Trombone (in brass), Alec. V. Reynolds' special soloist model, Class "A" Model No. 2, valued at SEVEN GUINEAS.
- FIFTH PRIZE.**—A CASH PRIZE OF FIVE POUNDS, and Messrs. F. TOMPKINS & SON, 29 Ethel Street, Northampton, will present one Class "A" Cornet, valued at SEVEN GUINEAS.

3. JUNIOR CUP "A" CONTEST

| Test Piece—SUITE ... "MIGNONNE" ... | | Beethoven | | |
|-------------------------------------|--------------------------------|---------------|-------------|---|
| No. | Band | Conductor | Draw Result | |
| 1. | Backworth Collieries Workmen's | J. Taylor | 13 | |
| 2. | Barnoldswick Public | J. A. Smith | 23 | |
| 3. | Branepeth Colliery | J. B. Wright | 10 | 2 |
| 4. | Carlton Temperance | H. Kemp | 11 | |
| 5. | Chislet Colliery | R. C. Lander | 13 | |
| 6. | Clayton | F. Berry | 17 | |
| 7. | Coventry | C. Sheppard | 27 | |
| 8. | Croydon Borough | P. Clarke | 29 | |
| 9. | Cwm Town Workmen's | T. Valentine | 29 | |
| 10. | Great Central and Metropolitan | W. Smith | 17 | |
| 11. | Kibworth | S. H. Liffe | 7 | |
| 12. | Lambeth Borough | T. Morgan | 7 | |
| 13. | Manvers Main | H. Shugg | 1 | |
| 14. | Newcastle Corporation Tramways | C. Ward | 20 | 5 |
| 15. | Northfleet | F. Dimmock | 21 | |
| 16. | Palmer's Works | G. Snowden | 26 | 1 |
| 17. | Rawmarsh | H. Ackroyd | 15X | |
| 18. | Royston Subscription | G. Buckle | 18 | |
| 19. | Skipton | W. Halliwell | 24 | 3 |
| 20. | Swindon G.W.R. | J. Lennon | 3 | |
| 21. | Thornley Colliery | E. Kitto | 22 | 4 |
| 22. | Thompson's Works | J. E. Fidler | 25 | |
| 23. | Watford | R. Hutchinson | 6 | |
| 24. | Whitwell British Legion | J. Farrington | 28 | |
| 25. | Workington Town | W. J. Smith | 2 | |
| 26. | Yeovil Town | J. B. Yorke | 14 | |
| 27. | Viewsley and West Drayton | A. W. Allen | 9 | |
| 28. | Ystradgynlais Public | T. C. White | 6 | |

10.30 a.m.—On the Terrace Bandstand

Brass Band Contest for the "Daily Mirror" Challenge Cup, the "Pearson's Weekly" Challenge Shield and other Prizes

Adjudicators:—Mr. W. ASTON CONNELL
Mr. DENIS WRIGHT

PRIZES

- FIRST PRIZE.**—THE *DAILY MIRROR* CHALLENGE CUP (subject to regulations), value Fifty Guineas, and a CASH PRIZE OF FIFTEEN POUNDS, and Messrs. W. PARTRIDGE & Co., 175 Clapham Road, London, S.W. 9, will present one open tone peg, Eight Bells, Stand and Beater, valued at SIX GUINEAS.
- SECOND PRIZE.**—THE *PEARSON'S WEEKLY* CHALLENGE SHIELD (subject to regulations), value Fifty Guineas, and a CASH PRIZE OF TEN POUNDS, and J. P. Hull, Esq., 36 Rathbone Place, Oxford Street, London, W.1 will present one Cornet and Case, valued at FIVE GUINEAS.
- THIRD PRIZE.**—A CASH PRIZE OF EIGHT POUNDS, and Messrs. PAXMAN Bros., 156 Shaftesbury Avenue, London, W.C. 2, will present one Pair of Turkish Cymbals, valued at FIVE GUINEAS.
- FOURTH PRIZE.**—A CASH PRIZE OF SEVEN POUNDS, and Messrs. BOSWORTH & Co., LTD., 8 Heddon Street, Regent Street, London, W. 1, will present one Set of Tubular Bells, valued at FIVE GUINEAS.
- FIFTH PRIZE.**—A CASH PRIZE OF FIVE POUNDS, and Messrs. LAWBACK Bros., 1 Hawley Road, Kentish Town, N.W. 1, will present one Bandmaster's Ebony Baton, with three handsome chased mounts, folding model, and complete in case, valued at TWO GUINEAS.

4. JUNIOR CUP "B" CONTEST

| Test Piece—SUITE ... "MIGNONNE" ... | | Beethoven | | |
|-------------------------------------|---------------------------|----------------|-------------|---|
| No. | Band | Conductor | Draw Result | |
| 1. | Alexandra L.M.S. | R. Cooper | 3 | |
| 2. | Baldwin's | T. Brennan | 10 | |
| 3. | Cambridge Town | E. S. Carter | 4 | |
| 4. | Coxlodge Institute | C. Ward | 26 | |
| 5. | Dunlop Works | A. Tomlinson | 25 | |
| 6. | Earl's Barton Old | W. Groome | 10 | 1 |
| 7. | Falmouth Town | T. J. Chainey | 22 | |
| 8. | Horsham Borough | W. Smith | 27 | |
| 9. | Irthlingborough Town | O. Pentelow | 11 | |
| 10. | Leeds Model | W. Bedford | 11 | |
| 11. | Lewisham Borough | W. J. Stevens | 8 | |
| 12. | Linthwaite | W. Sykes | 14 | |
| 13. | Long Eaton | H. Evetts | 18 | |
| 14. | Lumley Colliery | P. Buckle | 6 | |
| 15. | Milnsbridge Socialist | F. Braithwaite | 20 | |
| 16. | Morley | J. W. Spencer | 26 | |
| 17. | Morley | S. V. Wood | 25 | 2 |
| 18. | Morris Motors | W. L. Turnbull | 17 | |
| 19. | Northampton Borough | C. A. Anderson | 12 | |
| 20. | Ravensthorpe Subscription | J. A. Marshall | 2 | |
| 21. | Ripon City | H. W. Hill | 12 | |
| 22. | Rowntree's Cocoa Works | J. S. Wright | 16 | |
| 23. | Rugby Town | S. J. Bedford | 53 | 5 |
| 24. | Tilbury Town | C. T. Nicholls | 23 | |
| 25. | Tonyrefail | T. Jenkins | 9 | |
| 26. | Troedyrhiv | J. Williams | 9 | |
| 27. | Wood Green Excelsior | W. L. Dolling | 9 | |

Besson "Prototype" — THE WORLD'S BEST BAND INSTRUMENTS

LAWRENCE WRIGHT

AGAIN AT STALL No. 5

DON'T FORGET

THE WRIGHT SOLO CORNET BOOK No. 6

PUBLISHED SPECIALLY FOR THE BAND FESTIVAL

Which contains all the Big Hits, including: "Let Me Dream in your Arms again," "My Ideal," "Sarah Jane," "I'm just in the mood to-night," "Deep Night." "I'm perfectly satisfied," "The Hollow of a Hill," "Just Plain Folk," "You wanted Someone to play with," "Huggable, Kissable You," "The Heart of the Sunset," "Sweetheart of all my Dreams," "Carolina Moon," "Shinaniki Da," "Glad Rag Doll," "My Flame of Love," &c., &c.

To obtain all of these Up-to-date Successes

JOIN THE WRIGHT BAND CLUB NOW

Special Discount of 10% on Subscriptions for To-day only

Phone :
TEMPLE BAR 2141
(5 lines)

THE LAWRENCE WRIGHT MUSIC CO.,
19 Denmark Street, Charing Cross Road, London, W.C. 2

Telegrams :
VOCABLE,
WESTCENT,
LONDON

CRYSTAL PALACE

ENGLAND'S FINEST SPEEDWAY

THRILLING

DIRT TRACK RACING

Organised by London Motor Sports, Ltd.

SATURDAYS at 3.30

Admission 1/6 Children 6d.

Combined Tickets Admission and
Covered Stand 2/4

ENGAGEMENTS HAVE NOW
BEEN COMPLETED FOR THE

CRYSTAL PALACE GRAND CONTINENTAL CIRCUS

COMMENCING

BOXING DAY, December 26th

The Programme will include
**THE MOST POPULAR
CONTINENTAL ARTISTES**
Many of whom will be appearing
in England for the first time

10.30 a.m.—In the Canadian Building

Brass Band Contest for the "Cassell's" Challenge Shield and other Prizes

Adjudicators:—Mr. J. BRIER
Mr. F. ROGAN

PRIZES

FIRST PRIZE.—THE CASSELL'S CHALLENGE SHIELD (subject to regulations), value Fifty Guineas, and a CASH PRIZE OF FIFTEEN POUNDS.

SECOND PRIZE.—A CASH PRIZE OF TEN POUNDS.

THIRD PRIZE.—A CASH PRIZE OF EIGHT POUNDS.

FOURTH PRIZE.—A CASH PRIZE OF SEVEN POUNDS.

FIFTH PRIZE.—A CASH PRIZE OF FIVE POUNDS.

5. JUNIOR SHIELD (A) CONTEST

| Test Piece—SUITE ... "ROMANTIQUE" ... | | Schumann | |
|---------------------------------------|----------------------------------|------------------|-------------|
| No. | Band | Conductor | Draw Result |
| 1. | Almondbury | W. H. R. Shaw | |
| 2. | Altoft's West Riding Colliery... | G. Walsh | |
| 3. | Aylesbury Printing Works | W. Smith | |
| 4. | Barrow Iron and Steel Works... | A. Baker | 3 |
| 5. | Belmont Village... | A. Jennings | |
| 6. | Black Dyke Mills (Juniors) | H. Hepworth | |
| 7. | Boscombe Silver | R. J. Egleton | |
| 8. | Brantham Xylonite Works | J. Naylor | |
| 9. | Brixton and Clapham | R. A. Leedham... | 4 |
| 10. | Cardiff City Tramways | T. J. Powell | |
| 11. | Caerphilly Town | G. A. Wilkins | |
| 12. | Carlisle Buffalo | J. J. Ruddick | |
| 13. | Firbeck Colliery | H. Kennedy | 6 |
| 14. | Friary Brewery | H. Hind | |
| 15. | Glastonbury Town | J. B. Yorke | |
| 16. | Harrogate | N. Sidebottom | |
| 17. | Leyton Borough... | H. Rundle | |
| 18. | Machynlleth | G. H. Mercer | |
| 19. | Metropolitan Cable Works | E. H. Alder | |
| 20. | Paulton | R. Kingman | 5 |
| 21. | Penzance Independent | J. Probert | |
| 22. | Radstock... | T. Valentine | 1 |
| 23. | Ryhope Colliery... | J. Boddice | |
| 24. | Soham Comrades | F. J. Talbot | |
| 25. | St. Austell Town | E. F. Woodhead | |
| 26. | Thorne Colliery | P. Stapleton | |
| 27. | Tredegar Workmen's | S. Mounfield | |
| 28. | West Bromwich Excelsior | J. H. Hughes | |

10.30 a.m.—In the School of Art

Brass Band Contest for the "Iles" Challenge Shield and other Prizes

Adjudicators:—Mr. H. BENNETT
Mr. C. A. COOPER

PRIZES

FIRST PRIZE.—THE ILES CHALLENGE SHIELD (subject to regulations), value Fifty Guineas, and a CASH PRIZE OF FIFTEEN POUNDS.

SECOND PRIZE.—A CASH PRIZE OF TEN POUNDS.

THIRD PRIZE.—A CASH PRIZE OF EIGHT POUNDS.

FOURTH PRIZE.—A CASH PRIZE OF SEVEN POUNDS.

FIFTH PRIZE.—A CASH PRIZE OF FIVE POUNDS.

6. JUNIOR SHIELD (B) CONTEST

| Test Piece—SUITE ... "ROMANTIQUE" ... | | Schumann | |
|---------------------------------------|---------------------------------------|-----------------|-------------|
| No. | Band | Conductor | Draw Result |
| 1. | Barnard Castle | J. B. Wright | |
| 2. | Bolton Subscription | J. W. Hughes | |
| 3. | Bromley | S. J. G. Craker | |
| 4. | Brownley Colliery | T. Bewick | |
| 5. | Burbage | S. E. Moore | |
| 6. | Burton Excelsior | E. Booth | 5 |
| 7. | Canterbury | T. G. Young | |
| 8. | Caterham | F. R. Snow | |
| 9. | Cawston | D. J. Stevens | |
| 10. | Chesham Town | W. Greenwood | |
| 11. | Chichester City | E. D. Shepherd | |
| 12. | Child's Hill | C. E. James | |
| 13. | "Chronicle" Employees (Manchester) | J. Dow | 3 |
| 14. | Croft | C. Moore | |
| 15. | Earl Shilton | R. W. Iliffe | |
| 16. | Erith Town | J. Hart | |
| 17. | Fakenham Town | J. O. Hume | 4 |
| 18. | Grangewood | E. Headford | |
| 19. | Haywards Heath Town | W. G. Bosley | |
| 20. | Hitchin Town | J. T. Cannon | 2 |
| 21. | Lister's Works | J. G. Dobbing | |
| 22. | Newsome Public Works | W. J. Warburton | |
| 23. | Reigate Town | F. Wheatley | |
| 24. | Sheffield Corporation Tramways | J. P. Davison | |
| 25. | Sidmouth Town | J. B. Yorke | 1 |
| 26. | Turner's Hill and Worth | J. H. Chantler | |
| 27. | Wakefield Old | A. H. Mitchell | |
| 28. | West Hull Excelsior | S. Walmsley | |

BEEVER'S UNIFORMS

The firm with 65 years' reputation for Value, Fit and complete satisfaction.

We are Contractors to the following Bands

ST. HILDA'S, Winners of the World's Championship, 1912, 1920, 1921, 1924 and 1926
CARLISLE ST. STEPHEN'S World's Champions, 1927
MARSDEN COLLIERY, World's Champions, 1925
GRESWELL COLLIERY
IRWELL SPRINGS
BESSES O' TH' BARN
DOVE HOLES
NUTGROVE
CARLTON MAIN
SOWERBY BRIDGE
PENDLETON PUBLIC

YORKSHIRE MILITARY
DANNEMORA STEEL WORKS
BOLSOVER COLLIERY
BLACK DYKE MILLS JUNIOR
CROYDON BOROUGH
HEADINGTON SILVER
ST. PANCRAS
BARROW SHIPYARD
WILLESDEN TOWN
BRIGHOUSE & RASTRICK
EARL SHILTON
YIEWSLEY & WEST DRAYTON
RYHOPE COLLIERY
BOARHURST SILVER
GOXLIDGE INSTITUTE, etc., etc.

Coloured List of Designs and Samples sent Free on Application
Representative sent to Measure Free of Charge

BEEVER'S

(JAMES BEEVER & CO.)

26 ALDERMANBURY, LONDON, E.C. 2

Phone: Metropolitan 3272. Telegrams: Beevonaire, Phone, London

And at Huddersfield

All Correspondence should be addressed to London

Established in 1864

SHEER HONESTY

WEAVER & DICKSON

The Drum Specialists of

17 MANETTE STREET, LONDON, W.1

FOR OVER 45 YEARS

Makers of Drums, Bass, Tenor, Side, Tympani, and Percussion Instruments, as Bells, Chimes, Xylophones, Vibraphones (The Voxophone), to any specification or design.

A "WEAVER & DICKSON" Drum means Honest Value and Lifetime Service.

BARGAINS!!! at our Showrooms at 55 HIGH STREET, BLOOMSBURY, W.C. 2

Phone No.: GERRARD 4489

We have some real Honest Bargains in Brass Instruments—Cornets, Horns, Euphoniums, etc., all new and made to a Standard, not a price, yet they are all money-saving bargains. Write for details before it is too late—Now.

Besson "Prototype" — THE WORLD'S BEST BAND INSTRUMENTS

10.30 a.m.—In the Smoking Room

Brass Band Contest for the "Champion Journal" Challenge Cup and other Prizes

Adjudicators:—Mr. J. EATON
Mr. A. YOULD

PRIZES

FIRST PRIZE—THE CHAMPION JOURNAL CHALLENGE CUP (subject to regulations), and a CASH PRIZE OF FIFTEEN POUNDS.
SECOND PRIZE—A CASH PRIZE OF TEN POUNDS.
THIRD PRIZE—A CASH PRIZE OF EIGHT POUNDS.
FOURTH PRIZE—A CASH PRIZE OF SEVEN POUNDS.
FIFTH PRIZE—A CASH PRIZE OF FIVE POUNDS

7. JUNIOR SHIELD (C) CONTEST

| Test Piece—SUITE | "ROMANTIQUE" | Conductor | Draw | Schumann Result |
|-------------------------------|--------------|------------------|------|-----------------|
| 1. Berkhamsted Excelsior... | ... | J. Hager... | ... | 5 |
| 2. Bishop Stortford Town | ... | E. Barrett | ... | |
| 3. Bloomsbury Institution | ... | E. Henry | ... | |
| 4. Buntingford Town | ... | E. J. Smith | ... | |
| 5. Chatteris Town | ... | A. P. Setchfield | ... | |
| 6. Coedpoeth | ... | G. Nicholls | ... | |
| 7. Copthorne | ... | F. Snelling | ... | |
| 8. Filey | ... | H. Harper | ... | |
| 9. Gillingham Imperial | ... | T. S. Stokes | ... | |
| 10. Haggerston | ... | W. Reynolds | ... | |
| 11. Hoo St. Werburgh | ... | M. Simmons | ... | |
| 12. Huntingdon British Legion | ... | H. Sexton | ... | |
| 13. King's Heath Olde | ... | J. E. Hewes | ... | |
| 14. Lycett Mission | ... | F. Dimmock | ... | 2 |
| 15. Melingriffith Volunteer | ... | T. J. Powell | ... | |
| 16. Redhill, Town | ... | M. H. Summers | ... | |
| 17. Rochester City | ... | R. Ellison | ... | |
| 18. Shiney Row and District | ... | F. W. Wakeford | ... | 1 |
| 19. Shirebrook | ... | J. Levick | ... | 4 |
| 20. Southend | ... | T. Martin | ... | |
| 21. South Norwood (O.B.U.) | ... | A. E. Neal | ... | |
| 22. Stanford-le-Hope Town | ... | E. A. Arthrell | ... | 3 |
| 23. Thornton Heath | ... | C. G. Hilliard | ... | |
| 24. Thurlston Old | ... | T. Eastwood | ... | |
| 25. Towyn | ... | R. O. Jones | ... | |
| 26. Tyseley W.M.C. | ... | A. Willington | ... | |
| 27. Wem British Legion | ... | W. Reeves | ... | |
| 28. West Bromwich Borough | ... | A. Stephens | ... | |



J. HENRY ILES

Founder and Director, National Band Festival

THE CRYSTAL PALACE BAND FESTIVAL

It was in July, 1900, that Mr. Iles founded the Annual National Band Festival at the Crystal Palace for bands of the British Isles and the Colonies, comprising band contests and a concert by massed bands. From an entry of 40 bands in 1900, the National Band Festival has increased to an entry this year of more than 170 brass bands.

Bands are graded in Seven Sections:—

- (1) CHAMPIONSHIP.
- (2) GRAND SHIELD.
- (3) JUNIOR CUP (A and B).
- (4) JUNIOR SHIELD (A, B and C).

The names of the bands, their conductors, together with the names of the adjudicators and the music to be played, will be found on other pages in this programme.

Up to 1912 (for the Championship) the music set for the bands to play was an "arrangement" of some work not originally composed for a brass band. Since 1913, and at the 1920 and subsequent contests, the test piece has been specially composed for this contest. (There was no contest in the years 1914 to 1919).

Since 1921 His Majesty The King has graciously given his patronage to this great Musical Festival, the largest of its kind in the world. H. W.

ITEMS OF INTEREST

THE two test pieces for the principal sections of the contest were specially written for the event by Mr. C. Jenkins, a South Wales composer, who has now written three special pieces for the Championship contest. His work is greatly admired because of its beauty and also because it really is a test for every individual instrument of a band.

* * *
Of the sixteen bands in the National Championship four are previous champions.

SPECIAL NOTICE

For the convenience of visitors to the National Band Festival, arrangements have been made to keep the Post Office open until after the awards have been announced. This information is not available until after the conclusion of the Evening Concert, and those desirous of utilising the facilities referred to will be able to dispatch their communications from the Post Office adjoining the Main Entrance, either by telephone, telegram or letter.

6.30 p.m. ORGAN RECITAL by Mr. GATTY SELLARS

- | | | | | | | | | | | |
|---------------------------------------|-----------|-----------|-----------|-----------|-----------|-----------|-----------|-----------|-----------|----------------------|
| 1. "Hymn of Glory" - - - - - | - - - - - | - - - - - | - - - - - | - - - - - | - - - - - | - - - - - | - - - - - | - - - - - | - - - - - | <i>Pietro Yon</i> |
| 2. Overture - - - - - | - - - - - | - - - - - | - - - - - | - - - - - | - - - - - | - - - - - | - - - - - | - - - - - | - - - - - | <i>Gatty Sellars</i> |
| 3. Selection - - - - - | - - - - - | - - - - - | - - - - - | - - - - - | - - - - - | - - - - - | - - - - - | - - - - - | - - - - - | <i>Romberg</i> |
| 4. "The Storm" (by request) - - - - - | - - - - - | - - - - - | - - - - - | - - - - - | - - - - - | - - - - - | - - - - - | - - - - - | - - - - - | <i>Gatty Sellars</i> |

THE MASSED BANDS

| | |
|--|--------------------------------|
| BLACK DYKE MILLS (Yorkshire) | CRESWELL COLLIERY (Derbyshire) |
| CARLISLE ST. STEPHEN'S (Cumberland) | HARTON COLLIERY (Durham) |
| CARLTON MAIN FRICKLEY COLLIERY (Yorkshire) | IRWELL SPRINGS (Lancashire) |
| MARSDEN COLLIERY (Durham) | |
| Conductor - - - - - | MR. J. HENRY ILES |

PROGRAMME

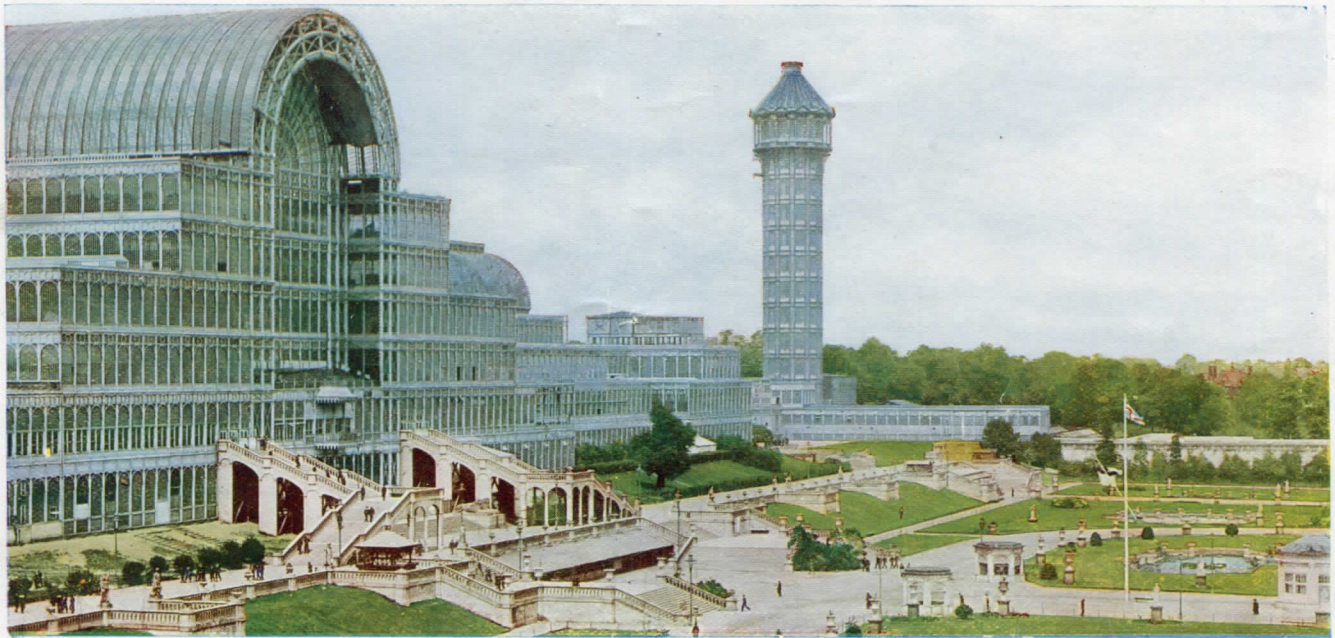
- | | | | | | | | | | | |
|--|-----------|-----------|-----------|-----------|-----------|-----------|-----------|-----------|-----------|-----------------------|
| 1. THE NATIONAL ANTHEM - - - - - | - - - - - | - - - - - | - - - - - | - - - - - | - - - - - | - - - - - | - - - - - | - - - - - | - - - - - | - - - - - |
| 2. March - - - - - | - - - - - | - - - - - | - - - - - | - - - - - | - - - - - | - - - - - | - - - - - | - - - - - | - - - - - | <i>Vivian May</i> |
| 3. March - - - - - | - - - - - | - - - - - | - - - - - | - - - - - | - - - - - | - - - - - | - - - - - | - - - - - | - - - - - | <i>Vivian May</i> |
| 4. Tone Poem - - - - - | - - - - - | - - - - - | - - - - - | - - - - - | - - - - - | - - - - - | - - - - - | - - - - - | - - - - - | <i>Percy Fletcher</i> |
| (CARLISLE ST. STEPHEN'S BAND. Conductor: W. LOWES) | | | | | | | | | | |
| 5. Heroic March from the - - - - - | - - - - - | - - - - - | - - - - - | - - - - - | - - - - - | - - - - - | - - - - - | - - - - - | - - - - - | <i>Percy Fletcher</i> |
| 6. Tone Poem - - - - - | - - - - - | - - - - - | - - - - - | - - - - - | - - - - - | - - - - - | - - - - - | - - - - - | - - - - - | <i>Cyril Jenkins</i> |
| (HARTON COLLIERY BAND. Conductor: E. THORPE) | | | | | | | | | | |
| 7. Entr'acte - - - - - | - - - - - | - - - - - | - - - - - | - - - - - | - - - - - | - - - - - | - - - - - | - - - - - | - - - - - | <i>Paul Andrews</i> |
| 8. March from - - - - - | - - - - - | - - - - - | - - - - - | - - - - - | - - - - - | - - - - - | - - - - - | - - - - - | - - - - - | <i>Gustav Holst</i> |
| 9. Rhapsody - - - - - | - - - - - | - - - - - | - - - - - | - - - - - | - - - - - | - - - - - | - - - - - | - - - - - | - - - - - | <i>Henry Geehl</i> |
| (BLACK DYKE MILLS BAND. Conductor: A. O. PEARCE) | | | | | | | | | | |
| 10. The following Hymns are the favourites of His Majesty the King, and are included in the programme as a special National Bandsmen's Thanksgiving for the restoration to health of their gracious Patron. The bands will play the tunes once through, and then the audience, at the second time, are requested to join in the singing. | | | | | | | | | | |

- | (1) | (2) | DOXOLOGY |
|--|---|--|
| Tune: "PRAISE MY SOUL" | Tune "THE OLD HUNDRETH" | Praise God from Whom all blessings flow. |
| Praise my soul, the King of Heaven, To His feet thy tribute bring, Ransomed, healed, restored, forgiven, Who like thee His praise should sing, Praise Him, praise Him, Praise the everlasting King. | All people that on earth do dwell, Sing to the Lord with cheerful voice, Him serve with fear His praise foretell, Come ye before Him, and rejoice. | Praise Him all creatures here below. Praise Him above ye heavenly host, Praise Father, Son and Holy Ghost. |
| 11. Chorus - - - - - | "Hallelujah" - - - - - | - <i>Handel</i> |
| 12. IMMEDIATELY AFTER the conclusion of the Concert, the Awards in the various Competitions held throughout the day will be shown on the screen. The numbers will correspond with those printed in the Official Programme. | | |

Seats, Prices - - - - - 2/-, 3/-, 4/- and 5/- including tax.

Seats can be booked from 10 a.m. at the Crystal Palace Box Office. Visitors are advised to BOOK EARLY

Besson "Prototype" - THE WORLD'S BEST BAND INSTRUMENTS



FELDMAN'S

TENTH LITTLE GREEN BOOK OF SOLO CORNET PARTS

of the Season's Song Successes, containing

THE FIRST SELECTION ARRANGED FROM TALKIE PICTURE MUSIC. THE FAMOUS
100% NATURAL COLOUR, ALL TALKING, ALL SINGING, ALL DANCING PICTURE

On With The Show

THE GREAT "KOSHER" MEDLEY FOX-TROT

Petticoat Lane

also

Lady Divine
Sleep Baby Sleep
Always the Same Sweet Pal
Mia Bella Rosa
Half Way to Heaven
Song of the Sea

Oh! Maggie, What Have You Been Up To?
Ah! Sweet Mystery of Life
What a Wonderful Wedding That Will Be
I Think of What You Used to Think of Me
Just a Night for Meditation
Heigh Ho! Ev'rybody Heigh Ho!

EVERY "HIT" A WINNING "HIT"!

PRICE

6^{D.}

B. FELDMAN & CO.

125, 127, 129 SHAFTESBURY AVENUE,
LONDON ————— W.C. 2

PRICE

6^{D.}

IT PAYS TO CALL AT FELDMAN'S STALL



"CORÄ"

THE CAIRN TERRIER, PROPERTY OF H.R.H. THE PRINCE OF WALES

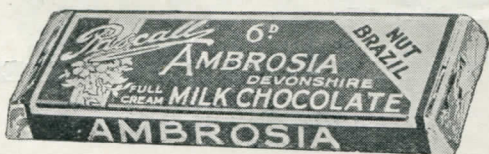
THE DEVELOPMENT OF BRASS BANDS AND THE INSTRUMENTS THEY PLAY

ONE hundred years ago, bandsmen donned their top hats and frock coats to practice the art of music on crude instruments of the key bugle, opheicleide, serpent, and other curious and obsolete types.

To-day, in this historic building of musical memories, over 3,000 highly-trained and skilled musicians, the pick of the many thousands of brass bands in the kingdom, do battle on British-made instruments, which embody every improvement that science and mechanical ingenuity has conceived.

One hundred years ago, a highly-skilled mechanic and acoustician, with the euphonious and apt name of Besson, commenced, with the aid of one assistant, to fashion instruments approximating to the modern type, in what was then a private dwelling house in the Euston Road, London.

To-day, at the same spot, but in commodious premises accommodating upwards of two hundred highly skilled craftsmen, the modern band instrument made, with a skill and precision that has secured for the leading British manufacturers the cream of the brass wind instrument trade of the world.



No other Milk can compare with that of Devon in rich creaminess. It is one of the most valuable of nature's nutritious food gifts and makes Ambrosia the finest Milk Chocolate obtainable; for Ambrosia alone of all Milk Chocolate is made with Full Cream Milk of Devonshire.

Individual taste has been provided for by the introduction of the 6d. Chubby Bar. Ambrosia prepared with wholesome nuts and fruits, these being obtainable in four varieties:

AMBROSIA MILK AMBROSIA BRAZIL NUT
AMBROSIA WITH TOASTED ALMONDS
AMBROSIA WITH ALMONDS AND RAISINS

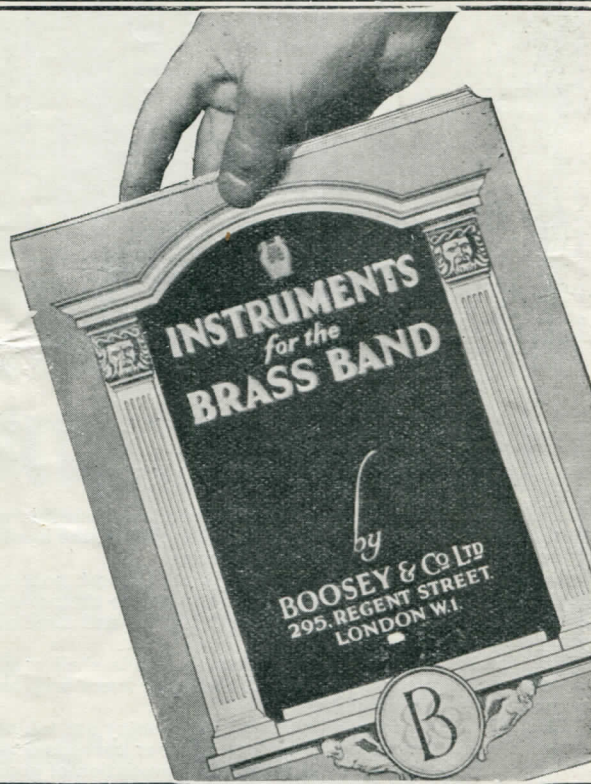
Pascall's

**AMBROSIA
MILK CHOCOLATE**

*A copy of the NEW Edition
of this catalogue is waiting
for you at*

**BOOSEY'S
STAND**

Get it NOW!



*Every Band Secretary should possess
a copy of this comprehensive catalogue
:: of Instruments and Accessories ::*

You have probably noted the wonderful successes achieved by "Boosey" equipped Bands—make a start NOW and equip your Band with the world's premier Band Instruments—BOOSEY'S

BOOSEY & CO., Ltd.
295 REGENT STREET, LONDON, W.1



AERIAL VIEW OF CRYSTAL PALACE

ITEMS OF INTEREST

THE bands in the whole of the sections hail from thirty-six different counties. Ninety-five per cent. of the bands entered are completely self-supporting.

A feature of this year's contest is the almost general adoption of the amateur conductor as opposed to the professional. In most cases the bands are being led and directed by their own bandmaster.

The enforcement of the rule that all bands shall wear uniforms, unless specially exempted, makes for much brighter and more dignified contests.

Over 170 bands from all parts of the country are taking part. This is the record of the twenty-four contests now held, and shows that with a growth of appreciation of good brass band music which these contests promote, the competition to gain the National Festival Awards grows keener every year.

The winner of the chief contest, that for the Thousand Guinea Trophy, holds the position for twelve months of Champion Band of Great Britain and the Colonies—really the Champion Band of the British Empire.

There are many new comers this year, including one band from Scotland, which country has not been represented for several years. This year, however, Wales drops out, not a single band from the Principality having entered.

The previous record entry was 140 last year, and the increased entry is beyond even the expectations of the most enthusiastic supporters of the contests.

THE WORLD'S POULTRY CONGRESS

(Continued from page 3)

interested in poultry, many attractions will be provided, including a military display in the grounds of the Crystal Palace. For delegates to the Congress many interesting functions are being arranged by the Entertainments Committee.

The Government will make full use of the latest developments of science and art, and among other unique exhibits there will be on view a film that will reveal the physiology of the digestive tract of a fowl. This extraordinary moving picture, which is being undertaken by the Radiological Department of Cambridge University, in conjunction with the Animal Nutrition Research Institute, will show the actual digestive process of food containing barium sulphate as it passes through the organs.

Besson "Prototype" — THE WORLD'S BEST BAND INSTRUMENTS

This Programme is a

*Photochrom
production*

Photochrom specialize in all branches of photographic work and printed illustration.

Photochrom Co., Ltd.
80 FLEET STREET
LONDON, E.C. 4

ADVERTISING CALENDARS
FOR ALL TRADES ARE
SUPPLIED FROM SPECIAL
DESIGNS FROM 100 UP

and at Graphic Works
TUNBRIDGE WELLS
KENT

SENSATIONAL NEWS!

GREAT BRITAIN'S ONLY

INDEPENDENT BAND JOURNAL

VIZ.:

"THE BANDSMAN'S WORLD"

MADE ITS DEBUT THIS MORNING

DID YOU SEE A COPY?

IF NOT SEND 2d. STAMP FOR A SPECIMEN

"NEWS & VIEWS WITHOUT FEAR OR FAVOUR"

TEMPORARY OFFICES:— 9 HALL RD., LONDON, E. 15.



CRYSTAL PALACE, THE NORTH NAVE

The Grand Organ at the Crystal Palace

THE GREAT CONCERT ORGAN which dominates the Centre Transept of the Crystal Palace is one of the most played upon Concert Organs in the Continent of Europe, for during the summer season, as many as four (and sometimes five) recitals a day are given upon it, and for the remainder of the year, two daily.

Besides these recitals, it takes an all-important part in the huge Choral and other Festivals held on the Great Orchestra in the Centre Transept, in the Triennial Handel Festivals, and in the Great Good Friday and other Concerts.

The present fine instrument took the place of that erected in the Crystal Palace in 1854 by Messrs. Gray & Davison. The stop control in that instrument was in the French ventil system, and I believe the late W. J. Best recommended it. Happily it has now entirely given place to a modern instrument. The action altogether was worn out and the organ was out of date. Messrs. J. W. Walker & Sons were therefore entrusted with the work of replacement, and by them it was entirely remodelled in 1919-20. Everything was brought up to date, new tubular pneumatic action throughout, and new sound boards were installed.

Some of the old metal work which was good was used again, but, generally speaking a clean sweep was made. The most important step of lowering the pitch, (which was High Concert pitch) to the French Diapason Normal was taken. The new instrument was used for the first time at the Handel Festival in 1920, when these Triennial Concerts were resumed after the war. The summer that year was an abnormally hot one, and the new organ was put to a very severe test. It came out most successfully and has now thoroughly settled down into one of the finest and most brilliant instruments, as it undoubtedly is.

WALTER W. HEDGCOCK,
Musical Director and Organist of the Crystal Palace.

Besson "Prototype" - THE WORLD'S BEST BAND INSTRUMENTS

THE
**PICTURE HOUSE
CRYSTAL PALACE**

Now Showing :—
EVELYN BRENT, CLIVE BROOK, WILLIAM POWELL & DORIS KENYON

in
INTERFERENCE

also
SHIPS OF THE NIGHT
Featuring JOHANNA HEARNE & JACQUELINE LOGAN

Continuous Performance Daily 2.30 to 10.30
Prices (including tax) 6d., 9d., 1/3 and 1/10

**THE KENNEL CLUB'S 68th
OPEN CHAMPIONSHIP SHOW**

OCTOBER 9th and 10th

THE PREMIER DOG SHOW OF THE WORLD
Over 2,000 dogs of 78 different varieties

**THE CRYSTAL PALACE GRAND INTER-
NATIONAL SHOW OF POULTRY, PIGEONS
and RABBITS**

NOVEMBER 20th, 21st, 22nd and 23rd



PARIS OVERNIGHT

VIA
**SOUTHAMPTON-
HAVRE**

(Waterloo dep. 9.p.m.-Paris arr. 10.15.a.m)

OR
**NEWHAVEN-
DIEPPE**

(Victoria dep. 8.20p.m.-Paris arr. 5.23.a.m)

Business Routes

For tickets, reservation
of seats, etc., apply-
Continental Enquiry
Office, Victoria Station,
London, S.W.1.

SOUTHERN RAILWAY