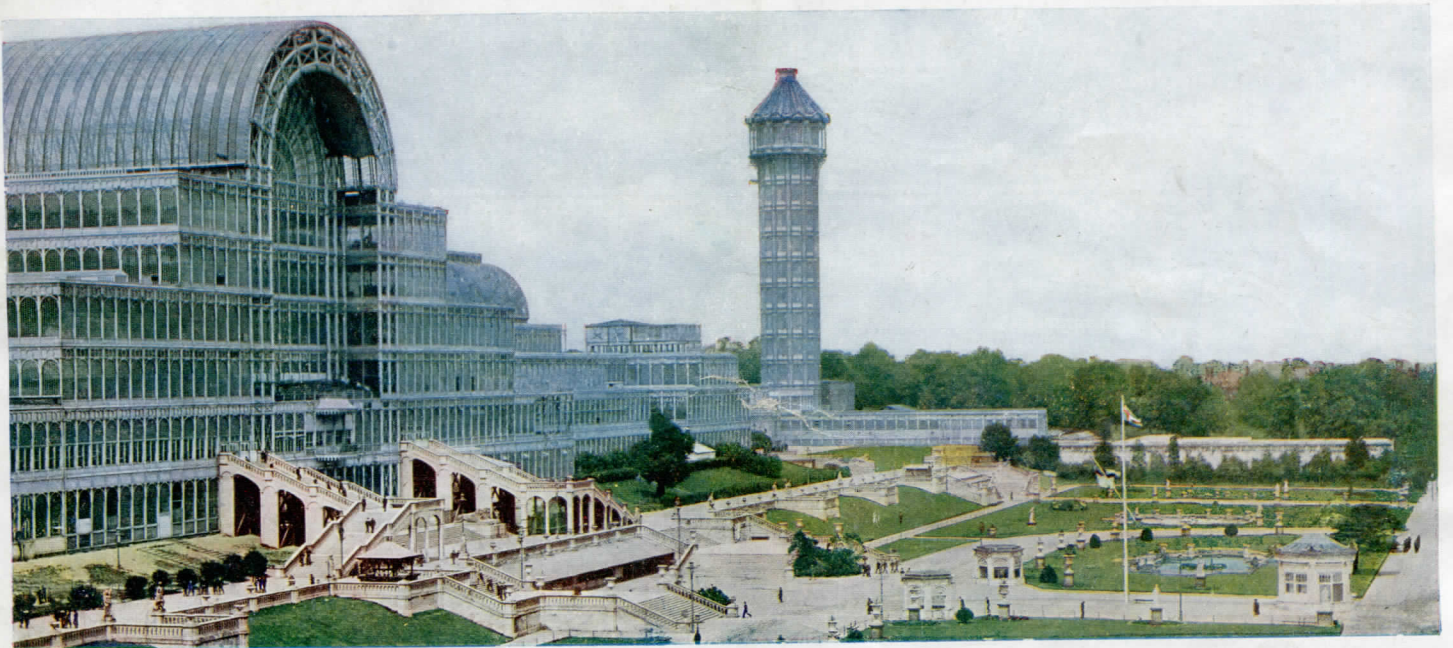


THE **22<sup>nd</sup>** ANNUAL  
**BAND CONTEST**  
being the 27<sup>th</sup> Anniversary of the  
**GREAT NATIONAL  
BAND FESTIVAL**



PROGRAMME AND SOUVENIR  
OF THE  
**CRYSTAL PALACE**

PRICE SIXPENCE

Official Publishers  
The Photochrom C<sup>o</sup> L<sup>td</sup> London & Tunbridge Wells  
Exclusive Copyright

SEE THE NAME **"Cadbury"** ON EVERY PIECE OF CHOCOLATE.



# CRYSTAL PALACE BAND CONTEST!!

## REGAL RECORDS

26

*The Championship Test Piece:*  
**"THE WHITE RIDER"**

will be issued

### FIRST on REGAL Records

Order it To-day!

**PREVIOUS PRIZE WINNERS ON REGAL RECORDS:**

1926.—"AN EPIC SYMPHONY"

1st Prize Winners—ST. HILDA COLLIERY BAND

1925.—Overture, "JOAN OF ARC"

1st Prize Winners—MARSDEN COLLIERY BAND

1924.—Rhapsody, "ON THE CORNISH COAST"

1st Prize Winners—ST. HILDA COLLIERY BAND

3rd Prize Winners—NEWCASTLE (N.S.W.) WORKS BAND

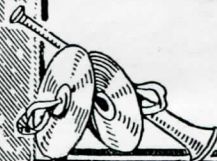
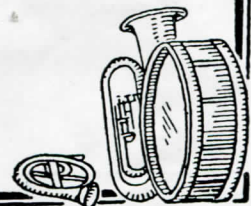
1923.—Overture, "OLIVER CROMWELL"

1st Prize Winners—LUTON RED CROSS BAND

2nd Prize Winners—BLACK DYKE MILLS BAND

3rd Prize Winners—FODEN MOTOR WORKS BAND

**REGAL—always REGAL!**







# CRYSTAL PALACE

HENRY JAMES BUCKLAND - - - General Manager

## THE 27th Anniversary of the Great National BAND FESTIVAL

(Being the Twenty-Second Band Contest)

SEPTEMBER 24th  
1 9 2 7

*Under the Gracious Patronage of*  
HIS MAJESTY THE KING

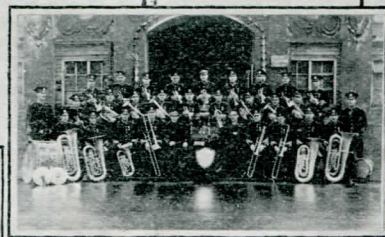
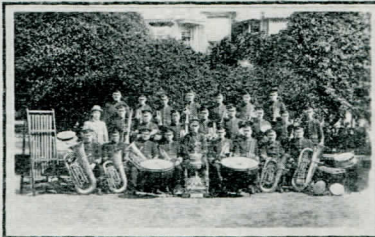
*Director and Founder* - - -

Mr. J. HENRY ILES  
(Officier d'Academie Francaise)

COPYRIGHT PUBLICATION  
BY THE  
PHOTOCHROM CO., LTD.  
80 FLEET STREET, LONDON, E.C. 4



# Some Recent Winning Bands



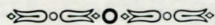
FODEN'S MOTOR WORKS  
WINGATES TEMPERANCE

ST. HILDA COLLIERY  
HORWICH R.M.I.  
BLACK DYKE MILLS

LUTON RED CROSS  
MARSDEN COLLIERY

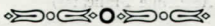
## THE MOLD "CLASSIC" BRASS BAND INSTRUMENTS

*Lists sent free on application*



**"HUSH-HUSH"** The New Mute for  
Cornet, Trumpet  
and Trombone

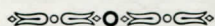
Ideal for Practice, Perfect in Intonation  
and Pitch



*Agents for the World Famous*

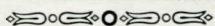
## BUFFET

WOOD-WIND AND REED INSTRUMENTS



**SPECIAL CONTEST PRICES TO-DAY**

CALL AT OUR STAND



## MOLD & CO.

(LES MOLD, Late of Boosey & Co. and Besson & Co.)

**36 DEAN STREET, LONDON, W.1**

*Makers and Repairers of Musical Instruments*

## W. BROWN & SONS' Famous Brass Band Instruments

**SEE OUR PRIZES & SPECIMENS  
AT OUR STALL**



**SPECIAL BIG REDUCTION IN  
PRICES AT CRYSTAL PALACE**



**Cannot be repeated but orders will  
be accepted to-day and next week at  
greatly reduced prices for future  
delivery**



*Second-Hand Band Sets always for Sale*

**Only Address:**

**323 Kennington Rd.  
London, S.E. 11**



# THE GREAT NATIONAL BAND FESTIVAL

## THE NATIONAL BAND FESTIVAL

was founded in 1900 by Mr. J. HENRY ILES

### The Crystal Palace Band Festival

NO one will deny that the Crystal Palace Annual Band Contests, which were initiated in 1900, as the National Brass Band Festival, by Mr. J. Henry Iles, the present director, have been the means of raising the standard of amateur band performances all over the United Kingdom.

It was in July, 1900, that Mr. Iles founded the Annual National Band Festival at the Crystal Palace for bands of the British Isles and the Colonies, comprising band contests and a concert by massed bands. He was instrumental in enlisting the keen personal support of the late Sir Arthur Sullivan, who first conducted the massed bands. To-day is held the 22nd Festival, all of which have from the commencement been under the personal direction of Mr. Iles.

From an entry of 40 bands in 1900, the National Band Festival has increased to an entry this year of no less than 140 brass bands.

Bands are graded in Six Sections :—

- (1) CHAMPIONSHIP.
- (2) GRAND SHIELD.
- (3) JUNIOR CUP (A and B).
- (4) JUNIOR SHIELD (A and B).

The names of the bands, their conductors, together with the names of the adjudicators and the music to be played, will be found on other pages in this programme.

Up to 1912 (for the Championship) the music set for the bands to play was an "arrangement" of some work not originally composed for a brass band. Since 1913, and at the 1920 and subsequent contests,

the test piece has been specially composed for this contest. (There was no contest in the years 1914 to 1919.)

Previous to 1922 the bands played standing, with the conductor in the centre. That year (in the Championship section) what is now known as "concert formation" was introduced—each player seated and using a separate music stand, the conductor in front of the band instead of the centre. At the 1923 contest, concert formation was adopted in each of the six sections.

At the 1922 contest the military band section was discarded in favour of an additional section for brass bands. This was the first of the "all brass" contests on a big scale. Previously there had been contests for military bands, boys' bands, reed bands and concertina bands. Handbell ringers and vocalists have appeared at the concert held in the evening after the competitions, and the evening concert items are now confined solely to brass bands.

In 1924 an Australian band competed for the Championship, which, up to the present, has always been retained by English bands.

This annual event for the Brass Band Championship now creates immense interest in musical circles all over the kingdom, for it is at the Crystal Palace that the playing of brass instruments is heard at its best.

Since 1921 His Majesty The King has graciously given his patronage to this great Musical Festival, the largest of its kind in the world.

H. W.

With their usual enterprise, the National Sunday League have arranged for the Band winning the Championship and Thousand Guinea Trophy to play on Sunday, September 25th, 1927, at the Finsbury Park Empire.



# LEADERSHIP!

Contest Records for nearly a century have  
*established* and those of 1927 *confirm*

**The Supremacy of the Besson "Prototype" Band Instruments**

---

---

**CRYSTAL PALACE 1,000 GUINEA TROPHY**

***A WONDERFUL RECORD***

Twenty-one Contests have been held, and on  
Nineteen Occasions the Trophy has been won by

***A BESSON EQUIPPED BAND***

---

---

**1927 CONTESTING SEASON**

***BESSON BANDS WIN BIG MAJORITY OF PRIZES***

*Here are a few notable examples :*

July Belle Vue. Rothwell Temperance (Mr. N. Sidebottom) Majority Besson

September Belle Vue. Foden's Works (Mr. W. Halliwell) - Majority Besson

Cornish Championship. Camborne Town (Mr. A. W. Parker) Besson Set

Dove Holes Band (Mr. J. A. Greenwood). Winners of Ten First Prizes in  
succession on their Besson Set.

Metropolitan Works Band, Saltley (Mr. G. H. Wilson). Winners of Eight First  
Prizes in succession on their Besson Set.

Hanwell Silver Band (Mr. W. Greenwood). Winners of Eight First Prizes in  
succession on their Besson Set

---

---

BESSON LEADERSHIP has been gained on MERIT.

The Besson House never has, and never will, present  
Instruments to any Band, Professional or Amateur, or  
to any Musician, however famous, for advertising or

:: :: :: other purposes :: :: ::

---

---

**BESSON** (*Famous for nearly a Century*)

196-8 EUSTON ROAD - LONDON - N.W. 1

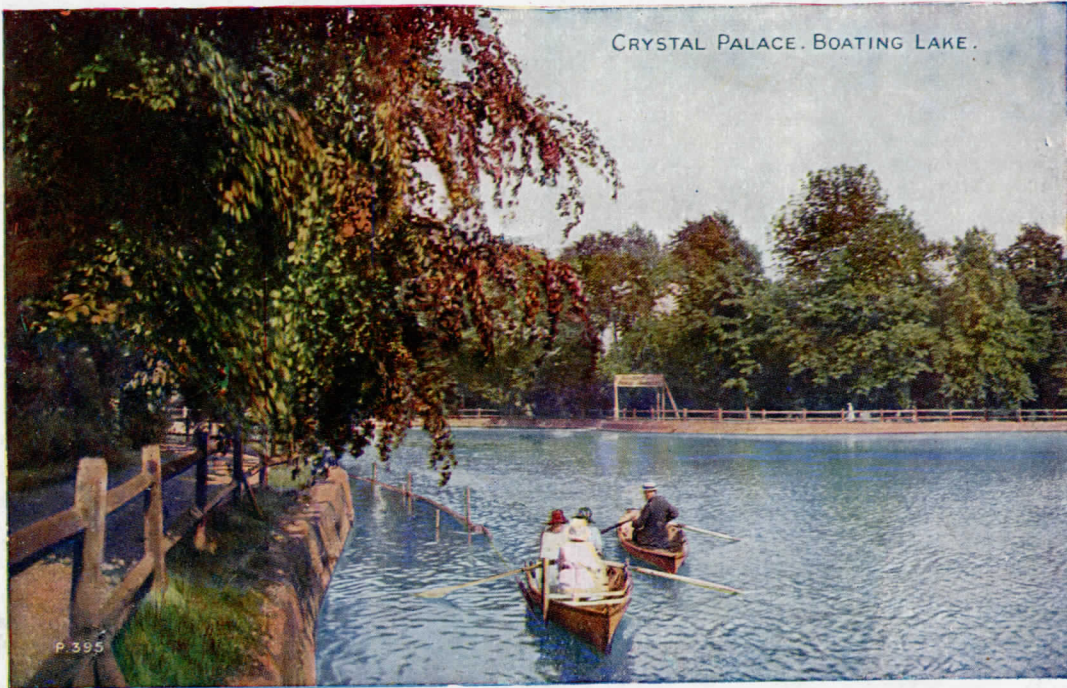




THE CRYSTAL PALACE, THE LARGEST EXHIBITION BUILDING IN THE WORLD

Photochrom Copyright





## LIST OF EXHIBITORS IN SOUTH NAVE

- Messrs. BEEVERS, 26 Aldermanbury, London, E.C.2.  
 Messrs. BESSON & Co., LTD., 196/198 Euston Road, London, N.W.1.  
 Messrs. BOOSEY & Co., LTD., 295 Regent Street, W.1.  
 Messrs. BOSWORTH & Co., LTD., 8 Heddon Street, London, W.  
 Messrs. W. BROWN & SONS, 323 Kennington Road, S.E.11.  
 Messrs. CAMPBELL, CONELLY & Co., 10 Denmark Street, Charing Cross Road, W.C.2.  
 Messrs. FELDMAN & Co., 125/129 Shaftesbury Avenue, London, W.C.2.  
 Messrs. HAWKES & SON, Denman Street, Piccadilly, W.1.  
 Messrs. JOSEPH HIGHAM, 58 Erskine Street, Stretford Road, Manchester.  
 Mr. J. P. HULL, 36 Rathbone Place, Oxford Street, London, W.1.  
 Messrs. KEITH PROWSE & Co., LTD., 159 New Bond Street, W.1.  
 Messrs. J. R. LAFLEUR & SON, LTD., 147 Wardour Street, London, W.1.  
 Mr. H. LAWBACK, 3 Jeffreys Place, N.W.1.  
 Messrs. THE LAWRENCE WRIGHT MUSIC Co., Denmark Street, Charing Cross Road, W.C.2.  
 Messrs. MOLD & Co., 36 Dean Street, London W.1.  
 Messrs. W. PARTRIDGE & Co., 175 Clapham Road, London, S.W.9.  
 Messrs. PAXMAN BROS., 156 Shaftesbury Avenue, London, W.C.2.  
 Mr. A. M. PHILPOT, 354 Beech Hill, Luton, Beds.  
 Messrs. T. REYNOLDS SENR. & SONS, 43 Chapel Street, Salford, Manchester.  
 Mr. F. TOMKINS, 20 Ethel Street, Northampton.  
 Messrs. THE UNIFORM CLOTHING AND EQUIPMENT Co., LTD., 5 Clerkenwell Green, London, E.C.1.

# EVANS' UNIFORMS

**FIT GUARANTEED VALUE UNBEATABLE  
 WORKMANSHIP PERFECT**

*Contractors to:*

|                             |                            |
|-----------------------------|----------------------------|
| Wingates Temperance Band    | Hanwe'l Town Silver        |
| Foden's Motor Works Band    | Prize Band                 |
| Horwich R.M.I. Band         | British Legion             |
| Irwell Springs Band         | Headquarters Band          |
| Hebden Bridge Band          | St. Dennis Silver Prize    |
| Crosfield's Perfection Soap | Band                       |
| Works Band                  | Govan Burgh Band           |
| Skelmersdale Old Prize      | Gwaun Cae Gurwen Silver    |
| Band                        | Prize Band                 |
| Adamson Military Band       | Belfast St. Patrick's Band |
| etc. etc. etc.              | Glazebury Prize Band       |

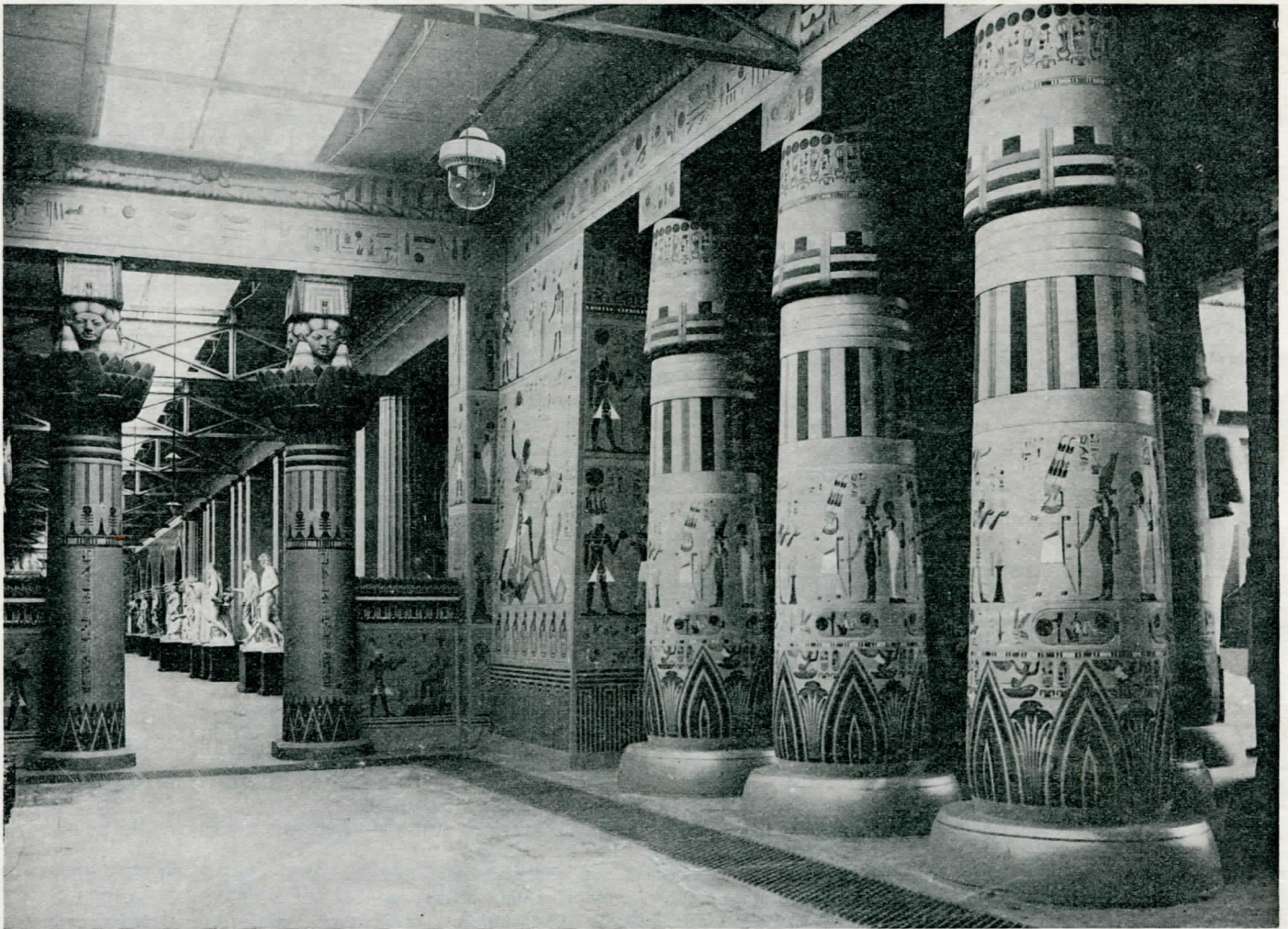
**Samples & Coloured Catalogue Carriage Paid  
 REPRESENTATIVE TO MEASURE FREE OF CHARGE**

THE  
**UNIFORM CLOTHING & EQUIPMENT Co., Ltd.**  
 5, 10, 11 CLERKENWELL GREEN, LONDON, E.C. 1.

TELE phone: CLERKENWELL 6682  
 grams: 'Uniquip, London'

Northern Representative:—Mr. J. CLARKSON,  
 47 Barrfield Road, Pendleton, Manchester. Phone: PENDLETON 144





CRYSTAL PALACE. COLUMNS OF THE TEMPLE OF KARNAK, EGYPTIAN COURT

## The Mecca Cafes

CATERERS BY APPOINTMENT TO THE CRYSTAL PALACE

Head Offices, Stores, etc.: **76 SOUTHWARK STREET, S.E. 1**

### LONDON:—CAFES AND RESTAURANTS

54 Gresham Street  
Telegraph Street.  
101 Leadenhall Street.  
145 Cannon Street.  
Broad Street.  
14 Walbrook.  
19 London Wall.

50/51 Fore Street.  
Great St. Helens.  
75b Queen Victoria Street.  
3 Gresham Street.  
9/10 Mark Lane.  
23 Coleman Street.  
67b Shaftesbury Avenue.

1 Whittington Avenue.  
69/70 Mark Lane.  
139 Cannon Street.  
King's Arms Yard.  
140 Cheapside.  
24 Lime Street.  
21 St. Mary Axe.

15 Copthall Avenue.  
68 Basinghall Street.  
56 Ludgate Hill.  
11a Queen Street.  
11/12 Blomfield Street.  
65/6 Chancery Lane.  
143 Charing Cross Road.

### PROVINCES

#### **BIRMINGHAM**

The Empire Cafe,  
Smallbrook Street  
The Station Street Cafe,  
Station Street.  
The Kings Cafe,  
Midland Arcade, New Street.  
The Mecca Cafe,  
Waterloo Street.  
The Cafe Royal,  
Prudential Buildings,  
Corporation Street.

#### **HULL**

The Mecca Cafe,  
Prudential Buildings,  
King Edward Street.

#### **CAMBRIDGE**

The Mecca Cafe,  
Petty Cury.

#### **SHEFFIELD**

The Haymarket Hotel,  
Haymarket.

#### **LIVERPOOL**

The Cotton Exchange Cafe,  
Ormond Street.  
The Mecca Cafe,  
6 Drury Lane.  
The Exchange Cafe,  
Exchange Flags.

#### **BRIGHTON**

The Mecca Cafe,  
105 King's Road.

#### **BRIDLINGTON**

The Mecca Cafe,  
8/9 Garrison Street.

#### **MANCHESTER**

The Mecca Cafe, 37 Cross Street.

#### **ST. ALBANS**

The Mecca Cafe, Market Place.

#### **TUNBRIDGE WELLS**

The Mecca Cafe,  
44/46 The Pantiles.

HOTELS. THE ROOF GARDEN HOTEL, John Bright Street, BIRMINGHAM.

THE EMPIRE HOTEL, Smallbrook Street, BIRMINGHAM

THE HAYMARKET HOTEL, King Street, SHEFFIELD

**SOLE CATERERS AT SHERRY'S DANCE HALL, BRIGHTON, AND  
ROYAL OPERA HOUSE DANCES, COVENT GARDEN**



# The Great Championship Contest

for the

## CRYSTAL PALACE ONE THOUSAND GUINEAS TROPHY

### LIST OF WINNERS

|   |  |
|---|--|
| 1900 DENTON ORIGINAL (Lancashire)       | 1910 FODEN'S MOTOR WORKS (Cheshire)                    |
| 1901 LEE MOUNT (Yorkshire)              | 1911 CROSFIELD'S SOAP WORKS (Lancashire)               |
| 1902 BLACK DYKE MILLS (Yorkshire)       | 1912-1920-1921-1924-1926 ST. HILDA COLLIERY (Durham)   |
| 1903 BESSES O' TH' BARN (Lancashire)    | 1922 HORWICH RAILWAY MECHANICS' INSTITUTE (Lancashire) |
| 1904 HEBBURN COLLIERY (Durham)          | 1923 LUTON RED CROSS (Bedfordshire)                    |
| 1905-8-13 IRWELL SPRINGS (Lancashire)   | 1925 MARSDEN COLLIERY (Durham)                         |
| 1906-7 WINGATES TEMPERANCE (Lancashire) |  |
| 1909 SHAW (Lancashire)                  |  |

### 1.0 p.m.—In the Concert Room

Grand Championship Brass Band Contest for the Crystal Palace One Thousand Guinea Challenge Trophy and the "Daily Telegraph" Challenge Cup, and other Prizes

*Ajudicators:* Mr. HENRY GEEHL  
Mr. EDWARD DUNN, A.R.M.C.M.

### PRIZES

FIRST PRIZE.—The Championship of Great Britain and the Colonies, the winners of which will be the holders for the year (under special regulations) of the CRYSTAL PALACE NATIONAL CHALLENGE TROPHY, of the value of One Thousand Guineas, and a CASH PRIZE OF ONE HUNDRED POUNDS.

Each Member of the Band, including the Bandmaster and Secretary, will also be presented with the CRYSTAL PALACE CHAMPIONSHIP BRONZE MEDAL, with Bar and Clasp.

Members of the Band winning the Trophy for the second time will be presented with the same medal IN SOLID SILVER; and Members of the Band winning the Trophy for the third time will be presented with SOLID GOLD MEDALS.

SECOND PRIZE.—The "DAILY TELEGRAPH" CHALLENGE CUP (subject to regulations), value Fifty Guineas, and a CASH PRIZE OF FIFTY POUNDS.

THIRD PRIZE.—A CASH PRIZE OF THIRTY POUNDS.

FOURTH PRIZE.—A CASH PRIZE OF TWENTY POUNDS.

FIFTH PRIZE.—A CASH PRIZE OF TEN POUNDS.

### 1. CHAMPIONSHIP CONTEST

TEST PIECE: "THE WHITE RIDER" ... Denis Wright

Specially Composed for this Festival and published by R. SMITH & CO., LTD., 210 Strand, London, W.C. 2

| No. | Band                                  | Conductor       | Draw  | Result | No. | Band                                 | Conductor       | Draw  | Result |
|-----|---------------------------------------|-----------------|-------|--------|-----|--------------------------------------|-----------------|-------|--------|
| 1.  | Black Dyke Mills (Yorks)              | W. Halliwell    | ..... | .....  | 9.  | Horwich R.M.I. (Lancs)               | W. Wood         | ..... | 6      |
| 2.  | Callender's Cable Wrks. (Kent)        | T. Morgan       | ..... | 2.     | 10. | Irwell Springs (Lancs)               | H. Barlow       | ..... | .....  |
| 3.  | Carlisle St. Stephen's (Cumb.)        | W. Lowes        | ..... | 1.     | 11. | Luton Red Cross (Beds)               | W. Halliwell    | ..... | .....  |
| 4.  | Carlton Main (Frickley Coll.) (Yorks) | N. Thorpe       | ..... | 3.     | 12. | Marsden Colliery (Durham)            | J. A. Greenwood | ..... | .....  |
| 5.  | Creswell Colliery (Notts)             | J. A. Greenwood | ..... | 5.     | 13. | Saltley Metropolitan Works (Warwick) | G. H. Wilson    | ..... | .....  |
| 6.  | Foden Motor Wks. (Cheshire)           | W. Halliwell    | ..... | 7.     | 14. | Sowerby Bridge (Yorks)               | W. Halliwell    | ..... | .....  |
| 7.  | Gwaun Cae Gurwen (S. Wales)           | T. Morris       | ..... | .....  | 15. | South Moor Coll. (Durham)            | J. C. Dyson     | ..... | .....  |
| 8.  | Harton Colliery (Durham)              | J. A. Greenwood | ..... | 4.     | 16. | Wingates Temperance (Lancs.)         | W. Halliwell    | ..... | .....  |

Admission to Concert Room ... .. TWO SHILLINGS

NOTE.—The Director's Office is in front of the Concert Hall. At "THE BRITISH BANDSMAN" Stand adjoining can be obtained the Conductor's parts of the Test Pieces—Price One Shilling.

A MUSICAL EXHIBITION

By all the Leading Musical Instrument Manufacturers, etc.

WILL BE HELD IN THE SOUTH NAVE

See List of Exhibitors, Page 6



The TWO BIG FEATURES at the  
**KEITH PROWSE**  
CHAMPIONSHIP DISPLAY

*FIRST :—Be Sure You Examine*

OUR WONDERFUL DISPLAY OF

**“MONOPOLE”**

CONTESTING BAND INSTRUMENTS

ASK TO SEE

THE “WONDER” TRUMPET

THE *BEST* TRUMPET VALUE EVER OFFERED

*SECOND :—Be Sure You Enter*

Our Championship Forecast Competition

Free Entries to all Bandsmen and Customers

Nominate the First Four Bands in order of merit in the

Championship Section and win Our Special Cash Prize

**LOOK OUT for the K.P. KIDS**

From whom Coupons may be had, or from our  
Stand, near the BIG CLOCK in the South Nave

*Special Bargains and Liberal Discounts All Day*

**KEITH PROWSE & Co., Ltd.**

159 NEW BOND STREET, LONDON, W. 1



## 10 a.m.—North Tower Gardens

**Brass Band Contest for the "Daily Express" Challenge Shield and "The People" Challenge Shield and other Prizes.**

*Adjudicators* :—MR. W. A. CONNELL, L.R.A.M. MR. DENIS WRIGHT, MUS. BAC.

### PRIZES.

**FIRST PRIZE.**—THE *DAILY EXPRESS* CHALLENGE SHIELD (subject to regulations), value Fifty Guineas, and a CASH PRIZE OF THIRTY POUNDS.

**SECOND PRIZE.**—THE *PEOPLE* CHALLENGE SHIELD (subject to regulations), and a CASH PRIZE OF TWENTY POUNDS.

**THIRD PRIZE.**—A CASH PRIZE OF FIFTEEN POUNDS.

### EXTRA PRIZES

**TO THE FOURTH BAND IN ORDER OF MERIT.**—Messrs. Hawkes & Son, Denman Street, Piccadilly, W. 1, will present one New Model "Clippertone" Cornet, finished in solid gold plating, with inside of bell highly burnished, complete with B $\flat$  and A shanks, tuning bit, two gold plated mouthpieces, cardholder, etc., and fitted complete in the new H.S. hand-bag, valued at THIRTY POUNDS TEN SHILLINGS.

**TO THE FIFTH BAND IN ORDER OF MERIT.**—Messrs. Besson & Co. Ltd., 196/198 Euston Road, London, sole manufacturers of the celebrated "Prototype" Instruments, will present one of their latest "New Creation" Tenor Slide Trombones, heavily silver-plated, handsomely engraved with gold embellishments, complete in attaché case, valued at TWENTY-ONE GUINEAS.

**TO THE SIXTH BAND IN ORDER OF MERIT.**—Messrs. Boosey & Co., Ltd., 295 Regent Street, W. 1, will present one Latest Model Silver-Plated and Gilt "Nva" Cornet, valued at EIGHTEEN GUINEAS.

**TO THE SEVENTH BAND IN ORDER OF MERIT.**—The Uniform Clothing and Equipment Co., Ltd., 5 Clerkenwell Green, London, E.C. 1, will present one Set of Music Stands and one Set of Band Books, printed in gold or silver lettering, with the name of the band and instrumentation Total value SEVENTEEN GUINEAS.

## 2. GRAND SHIELD CONTEST.

*Test Piece* — "AN EPIC SYMPHONY" — Percy Fletcher

| No. | Band   | Conductor       | Draw | Result |
|-----|--|-----------------|------|--------|
| 1.  | Bedford Trades (Beds)                          | E. Mobbs        | 4    |        |
| 2.  | Cambridge Railway (Cams)                       | J. C. Dyson     | 14   |        |
| 3.  | City of Leicester Club & Institute (Leicester) | R. Jackson      | 15   |        |
| 4.  | Colne Borough (Lancs)                          | W. Pollard      | 11   |        |
| 5.  | Croydon Borough (Surrey)                       | E. W. Miles     | 17   |        |
| 6.  | Crystal Palace (London)                        | W. Smith        | 1    |        |
| 7.  | Friendly Subscription (Yorks)                  | J. C. Dyson     | 3    |        |
| 8.  | Kettering Town (Northants)                     | F. Mortimer     | 16   |        |
| 9.  | Leicester Imperial (Leicester)                 | J. Jennings     | 9    |        |
| 10. | Middlesbrough Borough (Yorks)                  | W. Halliwell    | 5    | 3      |
| 11. | Newcastle Corporation Tramways (North'd)       | C. Ward         | 6    |        |
| 12. | Nutgrove (Lancs)                               | J. A. Greenwood | 5    |        |
| 13. | Raunds Temperance (Northants)                  | J. A. Greenwood | 7    |        |
| 14. | Rothwell Temperance (Yorks)                    | N. Sidebottom   | 10   | 1      |
| 15. | St. Dennis (Cornwall)                          | C. H. Baker     | 13   | 2      |
| 16. | Wigston's Temperance (Leicester)               | C. Moore        | 2    |        |
| 17. | Wolverton Town & Works (Bucks)                 | J. Oliver       | 8    |        |

## 10 a.m.—In the New Dance Hall

**Brass Band Contest for the "Daily Sketch" Challenge Cup, the "Champion Journal" Challenge Cup and other Prizes.**

*Adjudicators* :—MR. HERBERT BENNETT.  
MR. THOMAS KEIGHLEY, MUS. DOC., HON. FELLOW; R.M.C.M.

### PRIZES.

**FIRST PRIZE.**—THE *DAILY SKETCH* CHALLENGE CUP (subject to regulations), value Fifty Guineas, and a CASH PRIZE OF TWENTY POUNDS.

**SECOND PRIZE.**—THE *CHAMPION JOURNAL* CHALLENGE CUP (subject to regulations), and a CASH PRIZE OF FIFTEEN POUNDS.

**THIRD PRIZE.**—A CASH PRIZE OF TEN POUNDS.

### EXTRA PRIZES

**TO THE FOURTH BAND IN ORDER OF MERIT.**—Messrs. Keith Prowse and Co., Ltd., 159 New Bond Street, W. 1, will present one of their Class "A" Contesting Model "Monopole" B $\flat$  Cornets, triple silver-plated, engraved with handsome gold wreath, gold points and mouthpiece, and gold-plated bell, presentation de luxe finish, complete in solid leather attaché case, valued at TWENTY-ONE GUINEAS.

**TO THE FIFTH BAND IN ORDER OF MERIT.**—Messrs. Campbell, Connelly and Co., 10 Denmark Street, Charing Cross Road, W.C. 2, will present one Set of Tubular Bells, valued at EIGHTEEN GUINEAS.

**TO THE SIXTH BAND IN ORDER OF MERIT.**—Messrs. W. Brown & Sons, 323 Kennington Road, S.E., 11, will present one Silver-plated No. 1 Cornet, in leather case, valued at FIFTEEN POUNDS TEN SHILLINGS.

**TO THE SEVENTH BAND IN ORDER OF MERIT.**—Messrs. Beever's, 26 Aldermanbury, London, E.C. 2, will present a Bandmaster's Frock-coat Suit and Cap, valued at TWELVE GUINEAS.

## 3. JUNIOR CUP (A) CONTEST

*Test Piece*—SELECTION—"ON THE CORNISH COAST"—Henry Geehl

| No. | Band                                    | Conductor       | Draw | Result |
|-----|---|-----------------|------|--------|
| 1.  | Baxendale's (Manchester) Works          | J. Jennings     | 15   | 2      |
| 2.  | Birstall Old (Yorks)                    | J. C. Dyson     | 14   |        |
| 3.  | Camborne Town (Cornwall)                | A. W. Parker    | 3    |        |
| 4.  | Dove Holes Public (Cheshire)            | J. A. Greenwood | 17   |        |
| 5.  | Enfield Silver (London)                 | W. F. Clarke    | 11   |        |
| 6.  | Edmonton Silver (London)                | W. Tyrrell      | 12   |        |
| 7.  | Gt. Cen. & Metropolitan (London)        | W. Smith        | 11   |        |
| 8.  | Horden Colliery (Durham)                | J. C. Dyson     | 16   |        |
| 9.  | Hanwell Silver (Middlesex)              | W. Greenwood    | 9    |        |
| 10. | Kidsgrove Excelsior Y.M.C.A. (Cheshire) | J. Thorpe       | 8    |        |
| 11. | Manea Silver (Cams)                     | W. Nuttall      | 12   |        |
| 12. | Pontypool Town & Dist. (S. Wales)       | J. B. Yorke     | 2    |        |
| 13. | Pleasley Colliery (Notts)               | H. Lambeth      | 13   | 1      |
| 14. | Royston Subscription (Yorks)            | G. Buckle       | 7    |        |
| 15. | Rushden Town (Northants)                | M. J. Roberts   | 6    | 3      |
| 16. | St. Pancras Silver (London)             | F. Dimmock      | 5    |        |
| 17. | Wharfedale Woodmoor Colliery (Yorks)    | N. Thorpe       | 1    |        |
| 18. | Willesden Town (London)                 | C. McManus      | 10   |        |

## 10 a.m.—On the Terrace Bandstand.

**Brass Band Contest for the "Daily Mirror" Challenge Cup, the "Pearson's Weekly" Challenge Shield and other Prizes.**

*Adjudicators* :—MR. HUBERT BATH. MR. HAROLD HIND, L.R.A.M., A.R.C.M.

### PRIZES.

**FIRST PRIZE.**—THE *DAILY MIRROR* CHALLENGE CUP (subject to regulations), value Fifty Guineas, and a CASH PRIZE OF TWENTY POUNDS.

**SECOND PRIZE.**—THE *PEARSON'S WEEKLY* CHALLENGE SHIELD (subject to regulations), value Fifty Guineas, and a CASH PRIZE OF FIFTEEN POUNDS.

**THIRD PRIZE.**—A CASH PRIZE OF TEN POUNDS.

### EXTRA PRIZES

**TO THE FOURTH BAND IN ORDER OF MERIT.**—Messrs. J. R. Lafleur and Son, Ltd., 147 Wardour Street, London, W. 1, will present one "Alliance" Class "A" Cornet, British made, by J. R. Lafleur & Son, Ltd., triply silver-plated and engraved, in solid leather case, valued at EIGHTEEN GUINEAS.

**TO THE FIFTH BAND IN ORDER OF MERIT.**—The Lawrence Wright Music Co., Denmark Street, Charing Cross Road, London, W.C. 2, will present one Silver-plated Cornet, in case, suitably engraved, valued at FIFTEEN GUINEAS.

**TO THE SIXTH BAND IN ORDER OF MERIT.**—Messrs. W. Brown & Sons, 323 Kennington Road, S.E. 11, will present one Silver-plated No. 5 Cornet, in leather case, valued at ELEVEN GUINEAS.

**TO THE SEVENTH BAND IN ORDER OF MERIT.**—Mr. A. M. Philpot, 354 Beech Hill, Luton, Beds., will undertake Repairing Instruments or Plating to the value of SEVEN POUNDS TEN SHILLINGS.

**TO THE EIGHTH BAND IN ORDER OF MERIT.**—Mr. H. Lawback, 3 Jeffrey's Place, Camden Town, N.W. 1, will present one B $\flat$  Cornet Brass, with A and B shanks, lyre and patent double-cup mouthpiece, in case, valued at FIVE POUNDS TEN SHILLINGS.

## 4. JUNIOR CUP (B) CONTEST.

*Test Piece*—OVERTURE "ANNA BOLENA"—Donizetti

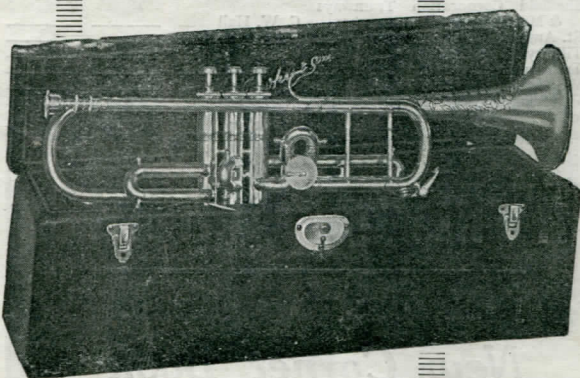
| No. | Band                                    | Conductor       | Draw | Result |
|-----|---|-----------------|------|--------|
| 1.  | Blaina New Lancaster (S. Wales)         | J. Probert      | 27   |        |
| 2.  | Brantham Xylonite Works (Suffolk)       | F. Ranger       | 15   |        |
| 3.  | Brixton & Clapham (London)              | P. Clarke       | 13   |        |
| 4.  | Cockerton (Durham)                      | A. A. Robinson  | 4    |        |
| 5.  | Clayton Silver (Yorks)                  | J. C. Dyson     | 2    |        |
| 6.  | Clifton Colliery (Notts)                | A. Wharmby      | 16   |        |
| 7.  | Callender's Cable Works (Junior) (Kent) | C. A. Waters    | 31   |        |
| 8.  | Coventry Silver (Warwick)               | T. Hynes        | 9    |        |
| 9.  | Dickenson Silver (Herts)                | W. Greenwood    | 23   |        |
| 10. | Fulham Borough (London)                 | J. A. Potts     | 27   |        |
| 11. | Grays Temperance (Essex)                | W. Watts        | 19   |        |
| 12. | Helmsboro (Lancs)                       | F. Tattersall   | 10   |        |
| 13. | Horsham Borough (Sussex)                | W. Smith        | 1    |        |
| 14. | Irthlingborough Town (Northants)        | O. Pentelow     | 3    |        |
| 15. | John Thompson Works (Staffs)            | G. H. Wilson    | 3    | 3      |
| 16. | Kibworth Silver (Leicester)             | S. S. H. Iliffe | 8    |        |
| 17. | Leasingthorne Colliery (Durham)         | E. Smith        | 20   |        |
| 18. | Lewisham Borough (London)               | T. Morgan       | 10   |        |
| 19. | Lambeth Borough (London)                | T. Morgan       | 8    | 2      |
| 20. | March Railway (Cams)                    | F. Dimmock      | 27   |        |
| 21. | Morris Motors (Oxford)                  | F. Dimmock      | 27   |        |
| 22. | North Middlesex Silver (London)         | W. C. Belsham   | 26   |        |
| 23. | Pontycymer Town (S. Wales)              | W. Layman       | 30   |        |
| 24. | Rowntree's Cocoa Works (Yorks)          | W. Halstead     | 30   |        |
| 25. | Stenales Silver (Cornwall)              | C. H. Baker     | 29   |        |
| 26. | Skipton (Yorks)                         | F. Metcalfe     | 20   | 1      |
| 27. | Treharris Workmen's (S. Wales)          | T. Powell       | 7    |        |
| 28. | Whitwell British Legion (Northants)     | J. Farrington   | 28   |        |
| 29. | Yiewsley & W. Drayton (Middx.)          | A. W. Allen     | 27   |        |
| 30. | Ystradgynlais Public (S. Wales)         | T. C. White     | 23   |        |
| 31. | 6th Batt. Welch Regt. (S. Wales)        | J. Jackson      | 17   |        |



# HAWKES' NEW SCHEME



THE "CLIPPERTONE" CORNET OUTFIT



THE "CLIPPERTONE" TRUMPET OUTFIT

## HERE IS YOUR OPPORTUNITY!

Musicians not possessing an instrument of their own can now do so and increase their earnings considerably by taking advantage of the HAWKES new No Deposit scheme of easy payments. Payments are easy and the terms simple. For example for 1/- per day you can secure a Hawkes "Clippertone" Cornet, which will enable you to play and pay for it at the same time.

Below are three examples of the scheme. If your instrument is not shown call at the Hawkes Stand to-day or write for full particulars.

### A FEW EXAMPLES

The "Clippertone" Cornet Outfit, as illustrated, can be **yours for £1 7s. 6d.**, balance payable in 11 monthly payments of £1 7s. 6d.

The "Clippertone" Trumpet Outfit, as illustrated, can be **yours for £1 11s.**, balance payable in 11 monthly payments of £1 11s.

The "XXth Century" Saxophone Outfit, as illustrated, can be **yours for £3**, balance payable in 11 monthly payments of £3.

### ORDER NOW

*Come and see our Exhibit. Test our instruments for yourself and save time and expense by placing your order to-day.*

### THE "XXth CENTURY" SAXOPHONE OUTFIT



SAVE YOURSELF  
1/-

1/- will be refunded to every purchaser of a "Kosikap" Mouthpiece from the Hawkes Stand to-day. Do not miss this opportunity.

**HAWKES & SON**  
(LONDON) LTD.  
DENMAN STREET  
PICCADILLY CIRCUS  
LONDON, W. 1



## 10 a.m.—In the Australian Building

Brass Band Contest for the "Cassell's Saturday Journal" Challenge Shield and other Prizes

Adjudicators:—MR. JAMES BRIER. MR. GEORGE HAWKINS

### PRIZES

FIRST PRIZE.—THE CASSELL'S SATURDAY JOURNAL CHALLENGE SHIELD (subject to regulations), value Fifty Guineas, and a CASH PRIZE OF TWENTY POUNDS.

SECOND PRIZE.—A CASH PRIZE OF FIFTEEN POUNDS.

THIRD PRIZE.—A CASH PRIZE OF TEN POUNDS.

### EXTRA PRIZES

TO THE FOURTH BAND IN ORDER OF MERIT.—Messrs. Feldman & Co., 125/129 Shaftesbury Avenue, London, W.C. 2, will present one "Artist's Perfected" Bb Tenor Slide Trombone, fully embellished with floreated ferrules, fitted with improved water key, triply silver-plated, with engraved wreath and gold-plated bell, valued at FIFTEEN POUNDS TEN SHILLINGS.

TO THE FIFTH BAND IN ORDER OF MERIT.—Messrs. Mold & Co., 36 Dean Street, London, W. 1, will present one Classic Model Cornet, triple silver-plated, with hand-burnished points and inside of bell, with G.S. valves, complete in attaché model fitted case, valued at ELEVEN GUINEAS.

TO THE SIXTH BAND IN ORDER OF MERIT.—Messrs. Joseph Higham, 58 Erskine Street, Stretford Road, Manchester, will present one Tenor Slide Trombone, "Paragon" Class "A" Model No. 1, in brass, valued at NINE GUINEAS (or other instrument to value).

TO THE SEVENTH BAND IN ORDER OF MERIT.—Messrs. Paxman Bros., 156 Shaftesbury Avenue, London, W.C. 2, will present a Pair of Turkish Cymbals, valued at FIVE POUNDS FIFTEEN SHILLINGS.

TO THE EIGHTH BAND IN ORDER OF MERIT.—Mr. J. P. Hull, 36 Rathbone Place, Oxford Street, W. 1, will present one Cornet, valued at FIVE GUINEAS.

## 5. JUNIOR SHIELD (A) CONTEST

| Test Piece—OVERTURE "DON GIOVANNI" |   | Mozart         |             |
|------------------------------------|---|----------------|-------------|
| No.                                | Band  | Conductor      | Draw Result |
| 1.                                 | Altofts (West Riding) Coll. (Yorks)         | G. Walsh       |             |
| 2.                                 | Baldwins Workmen's (S. Wales)               | C. Cornish     |             |
| 3.                                 | Brackley Borough (Northants)                | A. Smith       |             |
| 4.                                 | Carlton Temperance (Yorks)                  | H. Kemp        |             |
| 5.                                 | Chesham Town (Bucks)                        | W. Greenwood   |             |
| 6.                                 | Chichester City (Sussex)                    | E. D. Shepherd |             |
| 7.                                 | Cwm Town (S. Wales)                         | J. Probert     |             |
| 8.                                 | Dudley Town (Staffs)                        | J. Fellows     |             |
| 9.                                 | Filey Brass (Yorks)                         | H. Harper      |             |
| 10.                                | Hillhouse L.M.S. Railway Steam Shed (Yorks) | T. Eastwood    |             |
| 11.                                | Hitchin Town (Herts)                        | J. T. Cannon   |             |
| 12.                                | Hugglescoote & Ellistown (Leicester)        | J. Locker      |             |
| 13.                                | Ilford Silver (Essex)                       | E. H. Alder    |             |
| 14.                                | Letchworth Town (Herts)                     | W. Dodgson     |             |
| 15.                                | Leyton Borough (London)                     | H. Rundle      |             |
| 16.                                | Long Eaton (Notts)                          | H. Evetts      | 1           |
| 17.                                | Lumley Colliery (Durham)                    | J. Boddice     |             |
| 18.                                | Newbury Town (Berks)                        | W. G. Bosley   |             |
| 19.                                | Northfield Silver (Kent)                    | F. Dimmock     | 2           |
| 20.                                | Penclawdd Silver (S. Wales)                 | H. Sutcliffe   |             |
| 21.                                | Ripon City (Yorks)                          | H. W. Hill     |             |
| 22.                                | Rugby Town (Warwick)                        | S. Bedford     | 3           |
| 23.                                | Silchester Temperance (Hants)               | A. H. Muddiman |             |
| 24.                                | South Notts Silver (Notts)                  | B. Dunn        |             |
| 25.                                | Stanton Iron Works (Notts)                  | J. Turner      |             |
| 26.                                | Swindon Great Western (Wilts)               | B. Amor        |             |
| 27.                                | Tooting & Balham Districts (London)         | W. Ellis       |             |
| 28.                                | Wakefield Old (Yorks)                       | A. H. Mitchell |             |
| 29.                                | Wharnciffe Silkstone (Yorks)                | H. Nuttall     |             |
| 30.                                | Yeovil Town (Somerset)                      | R. W. Davison  |             |
| 31.                                | York N.U.R. (Yorks)                         | F. H. Machen   |             |

## 10 a.m.—In the Canadian Building

Brass Band Contest for the "Iles" Challenge Shield and other Prizes.

Adjudicators:—MR. MAURICE JOHNSTONE. MR. BASIL WINDSO

### PRIZES.

FIRST PRIZE.—THE ILES CHALLENGE SHIELD (subject to regulations), value Fifty Guineas, and a CASH PRIZE OF TWENTY POUNDS.

SECOND PRIZE.—A CASH PRIZE OF FIFTEEN POUNDS.

THIRD PRIZE.—A CASH PRIZE OF TEN POUNDS.

### EXTRA PRIZES

TO THE FOURTH BAND IN ORDER OF MERIT.—Messrs. Chas. E. Foote Ltd., 232, Hornsey Road, London, N. 7, will present one Set of Eight Tubular Bells, made of best bell metal tubes and nickel-plated, mounted on oak frame, fitted with leather trellis, complete with damper and raw hide mallet, valued at FIFTEEN GUINEAS.

TO THE FIFTH BAND IN ORDER OF MERIT.—Thomas Reynolds, Senr. and Sons, 43 Chapel Street, Salford, Manchester, will present one Trombone, valued at EIGHT POUNDS.

TO THE SIXTH BAND IN ORDER OF MERIT.—Mr. F. Tompkins, of 20 Ethel Street, Northampton, will present one Class "A" Star Model Cornet, valued at SEVEN GUINEAS.

TO THE SEVENTH BAND IN ORDER OF MERIT.—Messrs. W. Partridge and Co., 175 Clapham Road, London, S.W. 9, will present one Set of Bells, Beater and Stand, valued at FIVE POUNDS TEN SHILLINGS.

TO THE EIGHTH BAND IN ORDER OF MERIT.—Messrs. Bosworth & Co., Ltd., 8 Heddon Street, London, W. 1, will present one Small Set of Tubular Bells, valued at FIVE GUINEAS.

## 6. JUNIOR SHIELD (B) CONTEST

| Test Piece—OVERTURE "COSI FAN TUTTE" |   | Mozart         |             |
|--------------------------------------|---|----------------|-------------|
| No.                                  | Band  | Conductor      | Draw Result |
| 1.                                   | Alderley Edge (Cheshire)                        | S. Ford        |             |
| 2.                                   | Biggleswade Town (Beds)                         | H. G. Keene    |             |
| 3.                                   | Brampton Town (Cumberland)                      | J. Steel       |             |
| 4.                                   | Buntingford Town (Herts)                        | E. J. Smith    |             |
| 5.                                   | Canterbury Silver (Kent)                        | W. C. Burgess  |             |
| 6.                                   | Cheshire Lines Railway District (Lancs)         | T. Hynes       |             |
| 7.                                   | Denby Dale (Yorks)                              | J. C. Dyson    |             |
| 8.                                   | Earl Shilton Silver (Leicester)                 | C. Philpott    |             |
| 9.                                   | Harrogate Silver (Yorks)                        | N. Sidebottom  |             |
| 10.                                  | Headington Silver (Oxford)                      | W. F. Brooks   |             |
| 11.                                  | Hindley Public (Lancs)                          | P. Turton      |             |
| 12.                                  | King's Heath Old (Warwick)                      | J. H. Hewes    | 2           |
| 13.                                  | Knutsford Cross Town (Cheshire)                 | H. Mortimer    |             |
| 14.                                  | London Silver (London)                          | F. Wakeford    |             |
| 15.                                  | L.M.S. Alexandra (Lancs)                        | R. Cooper      |             |
| 16.                                  | Midsomer Norton (Somerset)                      | A. V. Matthews |             |
| 17.                                  | Northfield Institute (Warwick)                  | S. S. Price    |             |
| 18.                                  | Newport Pagnell Excelsior (Bucks)               | A. Grey        |             |
| 19.                                  | Penzance Independent (Cornwall)                 | G. W. Cave     |             |
| 20.                                  | Reigate Town (Surrey)                           | E. W. Miles    |             |
| 21.                                  | Sheffield Corporation Tramways & Motors (Yorks) | C. W. Hall     |             |
| 22.                                  | St. Austell Town (Cornwall)                     | E. F. Woodhead | 3           |
| 23.                                  | Tilbury Town (Essex)                            | G. T. Nicholls |             |
| 24.                                  | Troedyrhiw Silver (S. Wales)                    | J. Williams    | 1           |
| 25.                                  | Woodgate (Warwick)                              | F. R. Moore    |             |
| 26.                                  | Worthing Borough (Sussex)                       | J. J. Hampton  |             |
| 27.                                  | West Bromwich Excelsior (Staffs)                | J. T. Hughes   |             |

# BEEVER'S UNIFORMS

The firm with 62 years' reputation for Value, Fit and complete satisfaction.

### Uniform Contractors to

ST. HILDA'S BAND, Winners of the World's Championship, 1912, 1920, 1921, 1924 and 1926

CRESWELL COLLIERY BAND  
MARSDEN COLLIERY BAND

BESSES O' TH' BARN BAND  
CARLTON MAIN (FRICKLEY COLLIERY) BAND

SOWERBY BRIDGE BAND  
ROTHWELL TEMPERANCE BAND

CROYDON BOROUGH BAND  
DOVE HOLES PUBLIC PRIZE BAND

CRYSTAL PALACE BAND  
CAMBRIDGE RAILWAY SILVER BAND

BRANTHAM XYLONITE WORKS BAND  
AUSTRALIAN COMMONWEALTH BAND

COLNE BOROUGH BAND  
Etc., Etc., Etc.

Representative sent to Measure Free of Charge.  
Design Sheet, etc., sent Post Free.

# BEEVER'S

(JAMES BEEVER & CO.)

26 ALDERMANBURY, LONDON, E.C. 2

'Phone: CITY 3272. Telegrams: BEEVONAIRE, PHONE, LONDON  
And at Huddersfield

'Phone: 427 HUDDERSFIELD. Telegrams: BEEVER, HUDDERSFIELD

Established in 1864

# LAWRENCE WRIGHT'S

JUST OFF THE PRESS

## New Cornet Book

Containing

ALL 1927 SUCCESSES & Latest Hits for Military & Brass

Can be obtained at

# STAND No. 11

(Near Grill Room)

(Eleven)

All our Musician Friends are cordially invited to call and obtain terms of our Subscription . . . . Schemes . . . .

THE FINEST VALUE OFFERED





CRYSTAL PALACE. THE NORTH NAVE

“EVERYTHING IN BAND  
AND ORCHESTRA  
INSTRUMENTS”

**BUESCHER**  
*True Tone*

**TRUMPETS, CORNETS, TROMBONES, Etc.**

*Free!*

Write To-day, to Department Y, for a copy of “TONE TOPICS” the most complete book of information ever compiled about Brass and Reed Instruments

TELEPHONES:  
GERRARD  
3418-3419

*Clifford Essex & Son.*

15<sup>A</sup> GRAFTON STREET, NEW BOND ST. LONDON. W. 1.

TELEGRAMS:  
TRIOMPHE  
LONDON



## 6.30 p.m. ORGAN RECITAL by Mr. GATTY SELLARS

- |                             |         |                      |         |               |
|-----------------------------|---------|----------------------|---------|---------------|
| 1. Marche (New)             | - - - - | " MILITAIRE "        | - - - - | Gatty Sellars |
|                             |         | (First Performance)  |         |               |
| 2. Prelude in C sharp Minor | - - - - | - - - -              | - - - - | Vodorinski    |
| 3. Toccata in A             | - - - - | - - - -              | - - - - | - Blakely     |
| 4. Tone Picture             | - - - - | " AN OCEAN TEMPEST " | - - - - | Gatty Sellars |
|                             |         | (By Desire)          |         |               |

## THE MASSED BANDS

- |                                     |                                     |
|-------------------------------------|-------------------------------------|
| BLACK DYKE MILLS (Yorkshire)        | CRESWELL COLLIERY (Nottinghamshire) |
| CALLENDER'S CABLE WORKS (London)    | FODEN'S MOTOR WORKS (Cheshire)      |
| CARLISLE ST. STEPHEN'S (Cumberland) | ST. HILDA'S COLLIERY (Durham)       |
| CARLTON MAIN (Yorkshire)            | WINGATES TEMPERANCE (Lancashire)    |
| Conductor - - - -                   | - MR. J. HENRY ILES.                |

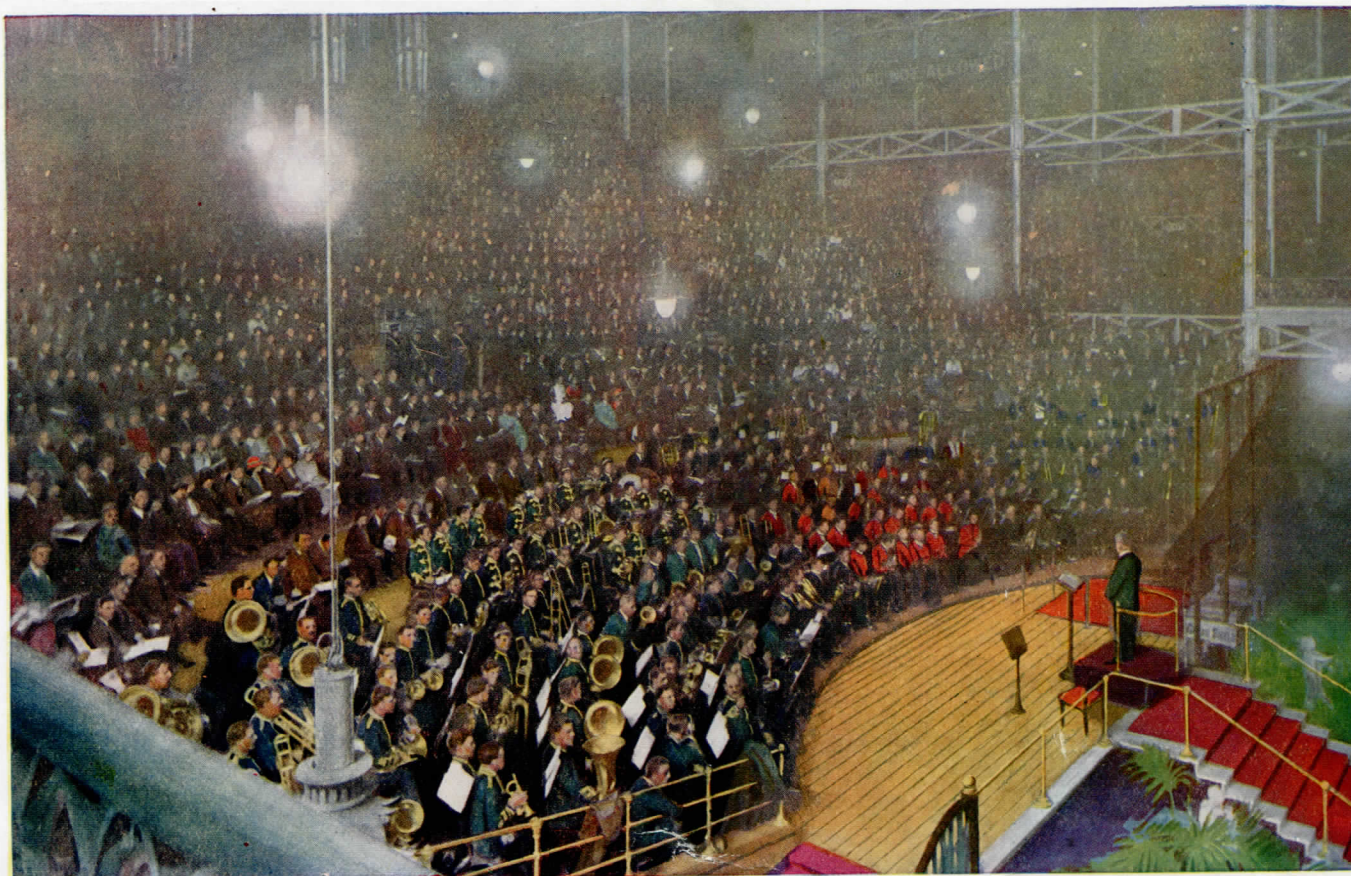
## PROGRAMME

- |  |         |                             |         |                |
|--|---------|-----------------------------|---------|----------------|
| 1. THE NATIONAL ANTHEM   | - - - - | THE MASSED BANDS            | - - - - | -              |
| 2. Introduction to Act III   | - - - - | " LOHENGRIN "               | - - - - | Wagner         |
|  |         | THE MASSED BANDS            |         |                |
| 3. Overture  | - - - - | " MIRELLA "                 | - - - - | Gounod         |
|  |         | THE MASSED BANDS            |         |                |
| 4. March   | - - - - | " EXILE "                   | - - - - | E. A. Weaver   |
|  |         | THE MASSED BANDS            |         |                |
| 5. Tone Poem   | - - - - | " LIFE DIVINE "             | - - - - | C. Jenkins     |
|  |         | CARLISLE ST. STEPHEN'S BAND |         |                |
| 6. March   | - - - - | " TOREADOR "                | - - - - | Bizet          |
|  |         | THE MASSED BANDS            |         |                |
| 7. Hymn Tunes—(a) " EDWINSTONE "   | - - - - | - - - -                     | - - - - | -              |
|  |         | (b) " ADESTE FIDELES "      | - - - - | -              |
|  |         | THE MASSED BANDS            |         |                |
| 8. Suite   | - - - - | " MERRY WIVES OF WINDSOR "  | - - - - | T. Keighley    |
|  |         | FODEN'S MOTOR WORKS BAND.   |         |                |
| 9. Overture  | - - - - | " RUY BLAS "                | - - - - | Mendelssohn    |
|  |         | THE MASSED BANDS            |         |                |
| 10. Symphony   | - - - - | " EPIC "                    | - - - - | P. E. Fletcher |
|  |         | ST. HILDA'S COLLIERY BAND   |         |                |
| 11. Fantasia   | - - - - | " A SAILOR'S LIFE "         | - - - - | S. Cope        |
|  |         | Conducted by the Composer   |         |                |
|  |         | THE MASSED BANDS            |         |                |
| 12. IMMEDIATELY AFTER the conclusion of the Concert, the Awards in the various Competitions held throughout the day will be shown on the screen. The numbers will correspond with those printed in the Official Programme. |         |                             |         |                |

Seats, Prices - - - - 2/-, 3/-, 4/- and 5/- including tax.

Seats can be booked from 10 a.m. at the Crystal Palace Box Office. Visitors are advised to BOOK EARLY





Photochrom Copyright Exclusive

THE MASSED BANDS' CONCERT, NATIONAL BAND FESTIVAL, CRYSTAL PALACE

# BIGGER THAN EVER!

## FELDMAN'S EIGHTH "LITTLE GREEN BOOK"

Containing 21 Solo Cornet parts of Latest Song Successes

### CONTENTS:

GET IT AT  
FELDMAN'S  
:: STALL ::

**6<sup>d.</sup>**

|                                    |   |                                    |
|------------------------------------|---|------------------------------------|
| Only a Rose                        | } From the successful production "The Vagabond King," by Rudolf Friml, at the Winter Garden Theatre, London | (Cornet Solo)                      |
| Song of the Vagabonds              |   | (Patrol March)                     |
| Waltz Huguette                     |   | (Waltz)                            |
| When the Love-Bird Leaves the Nest | ...   | ... (Fox-Trot)                     |
| Ting a Ling                        | ...   | ... (Waltz of the Bells)           |
| Ma! Look at Charlie                | ...   | ... (One or Two-Step)              |
| To-Night You Belong to Me          | ...   | ... (Valse)                        |
| Mary Lou                           | ...   | ... (Fox-Trot)                     |
| When the Guards Go By              | ...   | ... (Patrol Militaire)             |
| Since I Found You                  | ...   | ... (Intermezzo Fox-Trot)          |
| Yiddish Charleston                 | ...   | ... (Charleston)                   |
| Grandfather's Whiskers             | ...   | ... (Comedy Fox-Trot)              |
| Hello! Swanee, Hello!              | ...   | ... (Fox-Trot)                     |
| I'm Sailing Off to China           | ...   | ... (Charleston or Fox-Trot)       |
| Tell Me To-Night                   | ...   | ... (Fox-Trot)                     |
| Toledo                             | ...   | ... (Spanish One-Step)             |
| Memories of You                    | ...   | ... (Fox-Trot)                     |
| Matador                            | ...   | ... (Spanish One-Step)             |
| That Night in Araby                | ...   | ... (Oriental Intermezzo Fox-Trot) |
| Oh! Charley, Take it Away          | ...   | ... (One or Two-Step)              |
| THE VAGABOND KING                  | ...   | ... Selection                      |

GET IT AT  
FELDMAN'S  
:: STALL ::

**6<sup>d.</sup>**

THE OLD PRICE FOR THE NEW MUSIC!

B. FELDMAN & Co., 125, 127, 129 Shaftesbury Avenue, London, W.C. 2





MUSIC HATH CHARMS TO CHEER AN ERRING BROTHER  
(FROM THE PAINTING BY GORDON BROWNE, R.I.)

Published by Photochrom Co., Ltd.,  
London and Tunbridge Wells



# BOOSEY'S

INSTRUMENTS

*have been played by over*

# 100

## First-Prize Winning Bands this year

The successes achieved by Bands equipped with Boosey's Instruments are solid, consistent and progressive—important factors in the career of every Contesting Band. The sooner your Band is equipped with Boosey's Instruments the sooner :: :: it will figure in the Prize Lists :: ::  
*Act Now! Ask for particulars and Catalogues*

BOOSEY & Co. Ltd., 295 REGENT STREET, LONDON, W. 1.

## DRUMMER'S D R U M S

ALL BEAR THE MARK

### "MANETTE"

THE PRODUCT OF  
FORTY YEARS OF  
SPECIALIZED  
CONSTRUCTION BY

## WEAVER & DICKSON

THE DRUM SPECIALISTS

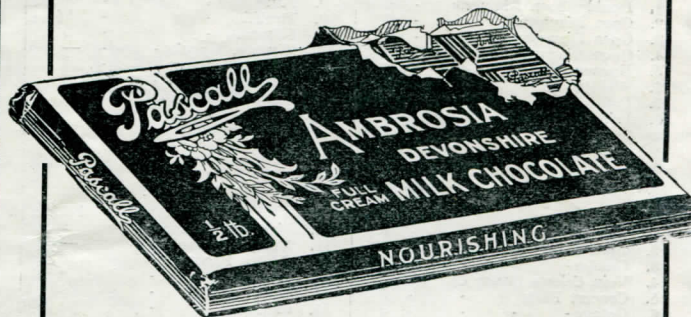
55 HIGH ST. (BLOOMSBURY), W.C. 2

VISITORS TO THE FESTIVAL

Will be able to see these "Manette" Drum products—and also to purchase essential Drum Fitments necessary to the modern Drummer—from the Stand of the Agents

MESSRS. MOLD & CO.

— IN THE SOUTH NAVE —



Made with full cream Devonshire Milk, Ambrosia Chocolate is undoubtedly the finest procurable. It is smooth to the palate; does not cloy, and is sustained and nutritious.

Presentation Caskets, filled with an excellent selection of Pascall specialities, are given free to all purchasers of Ambrosia who are successful in obtaining a complete set of cards which are to be found in all packets.

Start collecting now!

In Packets 8d. and 1/2



# The Grand Organ at the Crystal Palace

THE GREAT CONCERT ORGAN which dominates the Centre Transept of the Crystal Palace is one of the most played upon Concert Organs in the Continent of Europe, for during the summer season, as many as four (and sometimes five) recitals a day are given upon it, and for the remainder of the year, two daily.

Besides these recitals, it takes an all-important part in the huge Choral and other Festivals held on the Great Orchestra in the Centre Transept, in the Triennial Handel Festivals, and in the Great Good Friday and other Concerts.

The present fine instrument took the place of that erected in the Crystal Palace in 1854 by Messrs. Gray & Davison. The stop control in that instrument was in the French ventill system, and I believe the late W. J. Best recommended it. Happily it has now entirely given place to a modern instrument. The action altogether was worn out and the organ was out of date. Messrs. J. W. Walker & Sons were therefore entrusted with the work of replacement, and by them it was entirely remodelled in 1919-20. Everything was brought up to date, new tubular pneumatic action throughout, and new sound boards were installed.

Some of the old metal work which was good was used again, but, generally speaking a clean sweep was made. The most important step of lowering the pitch, (which was High Concert pitch) to the French Diapason Normal was taken. The new instrument was used for the first time at the Handel Festival in 1920, when these Triennial Concerts were resumed after the war. The summer that year was an abnormally hot one, and the new organ was put to a very severe test. It came out most successfully and has now thoroughly settled down into one of the finest and most brilliant instruments, as it undoubtedly is. A full specification is appended by which it will be seen that it contains 78 stops, besides numerous accessories for control, etc.

WALTER W. HEDGCOCK,

*Musical Director and Organist of the Crystal Palace.*

## SPECIFICATION

Compass of Manuals—CC to C, 61 Notes.  
Pedals—CCC to F, 30 ½ "

### GREAT ORGAN

| Feet                     |       | Feet                 |       |
|--------------------------|-------|----------------------|-------|
| 1. Double Open Diapason  | - 16  | 9. Flute             | - 4   |
| 2. Open Diapason, Large  | - 8   | 10. Twelfth          | - 2 ½ |
| 3. Open Diapason, Medium | - 8   | 11. Fifteenth        | - 2   |
| 4. Open Diapason, Small  | - 8   | 12. Mixture, 4 ranks | -     |
| 5. Harmonic Flute        | - 8   | 13. Double Trumpet   | - 16  |
| 6. Wald Flute            | - 8   | 14. Posaune          | - 8   |
| 7. Quint                 | - 5 ½ | 15. Harmonic Trumpet | - 8   |
| 8. Principal             | - 4   | 16. Clarion          | - 4   |

### SWELL ORGAN

| Feet                      |       | Feet                   |      |
|---------------------------|-------|------------------------|------|
| 1. Bourdon                | - 16  | 10. Flageolet Harmonic | - 2  |
| 2. Open Diapason          | - 8   | 11. Mixture, 4 ranks   | -    |
| 3. Gamba                  | - 8   | 12. Contra Fagotto     | - 16 |
| 4. Voix Celeste (tenor C) | - 8   | 13. Cornopean          | - 8  |
| 5. Concert Flute          | - 8   | 14. Oboe               | - 8  |
| 6. Octave                 | - 4   | 15. Clarion            | - 4  |
| 7. Flute                  | - 4   | 16. Vox Humana         | - 8  |
| 8. Twelfth                | - 2 ½ | Tremulant              | -    |
| 9. Fifteenth              | - 2   |                        |      |

### CHOIR ORGAN

| Feet                      |      | Feet                 |     |
|---------------------------|------|----------------------|-----|
| 1. Contra Gamba           | - 16 | 8. Claribel Flute    | - 4 |
| 2. Lieblich Bourdon       | - 16 | 9. Octave Flute      | - 2 |
| 3. Gamba                  | - 8  | 10. Harmonic Piccolo | - 2 |
| 4. Salsicional            | - 8  | 11. Clarinet         | - 8 |
| 5. Vox Angelica (tenor C) | - 8  | 12. Orchestral Oboe  | - 8 |
| 6. Clarinet Flute         | - 8  | Tremulant            | -   |
| 7. Harmonic Flute         | - 4  |                      |     |

### SOLO ORGAN

(Separate Swell Box for Nos. 2 and 6)

| Feet                    |     | Feet                 |     |
|-------------------------|-----|----------------------|-----|
| 1. Open Diapason, Large | - 8 | 4. Tromba            | - 8 |
| 2. Harmonic Flute       | - 8 | 5. Clarion           | - 4 |
| 3. Harmonic Flute       | - 4 | 6. Corno-di-Bassetto | - 8 |

### PEDAL ORGAN

| Feet                        |        | Feet                 |      |
|-----------------------------|--------|----------------------|------|
| 1. Double Open Diapason     | - 32   | 8. Violoncello       | - 8  |
| 2. Open Diapason, Wood      | - 16   | 9. Octave            | - 8  |
| 3. Open Diapason, Metal     | - 16   | 10. Flute            | - 8  |
| 4. Bourdon                  | - 16   | 11. Contra Bombarde  | - 32 |
| 5. Gamba (from Choir No. 1) | - 16   | 12. Trombone, Metal  | - 16 |
| 6. Quint                    | - 10 ½ | 13. Ophicleide, Wood | - 16 |
| 7. Principal                | - 8    | 14. Trumpet          | - 8  |

### COUPLERS

|                   |   |
|-------------------|---|
| 1. Great to Pedal | 8. Swell Octave                         |
| 2. Swell to Pedal | 9. Swell Sub-Octave                     |
| 3. Choir to Pedal | 10. Swell Unison Off                    |
| 4. Solo to Pedal  | 11. Solo Octave                         |
| 5. Swell to Great | 12. Solo Sub-Octave                     |
| 6. Swell to Choir | 13. Solo Unison Off                     |
| 7. Solo to Great  | 14. Great Pistons to Pedal Combinations |

### ACCESSORIES

|                                     |  |
|-------------------------------------|--|
| Five Adjustable Combination Pistons | to Great   |
| Five " " "                          | " to Swell   |
| Three " " "                         | " to Choir   |
| Three " " "                         | " to Solo  |
| One " " "                           | Piston, controlling Combinations over the whole Organ  |
| Five " " "                          | Pedals to Pedal Organ                                  |
| Five Combination Pedals             | to Swell Organ, duplicating Swell Pistons              |
| Double-acting Pedal                 | controlling Great to Pedal Coupler. (Walker's Patent.) |
| " " "                               | " " Swell to Great Coupler. " "                        |
| " " "                               | " " Swell Tremulant. " "                               |
| " " "                               | " " Choir Tremulant. " "                               |

Ivory Drawstops arranged on fumed oak panelled stop-jambs, placed at an angle of 45 degrees.

Pedal Board Radiating and Concave.

Balanced Swell Pedals to Swell and Solo Organs.

All Stops run throughout the full Compass of the Manuals except No. 4 Swell and No. 5 Choir.

Harmonic Trebles to all Chorus Reeds.

The wind at various pressures generated by "Discus" Fan Blowing installation, the work of Messrs. Watkins & Watson, of Islington, London, N. 1.

The wind distributed throughout the Organ by means of fourteen separate reservoirs.

Tubular Pneumatic Action to Manuals, Pedals, Manual Couplers, Draw stop Action, and all Combination Pistons and Pedals.



# ORIGINAL WORKS for BRASS BAND

(Used as Championship test-pieces at Crystal Palace)

*Published by*

**R. SMITH & CO. LTD., 210 Strand, London**

*(Publishers of all the Crystal Palace Test Pieces)*

**Musical Adviser : Herbert Whiteley**

|                        |                             |
|------------------------|-----------------------------|
| 1913 "LABOUR AND LOVE" | 1920 "CORIOLANUS"           |
| 1921 "LIFE DIVINE"     | 1922 "FREEDOM"              |
| 1923 "OLIVER CROMWELL" | 1924 "ON THE CORNISH COAST" |
| 1925 "JOAN OF ARC"     | 1926 "EPIC SYMPHONY"        |
| 1927 "THE WHITE RIDER" |                             |

**ANY 20 PARTS 6/-**

**FULL SCORES 3/-**

## THE BRITISH BANDSMAN

**LETTERS:** Address to "The British Bandsman" 210 Strand, London

**TELEGRAMS:** "Bandsman," 210 Strand, London.

**PHONE:** Central 9637.

**PUBLISHING DAY:** Friday.

**NEWSAGENTS:** Any Newsagent will supply "The British Bandsman." Single copies by post, 3½d.

**SUBSCRIPTION:** 13 weeks, 3/6; 26 weeks, 7/-

**LATEST TIME** for News and Advertisements, 1st post Tuesday.

**SEE NEXT ISSUE FOR ADJUDICATORS' NOTES ON CHAMPIONSHIP**

THIS PROGRAMME AND SOUVENIR HAS BEEN PRODUCED BY

## PHOTOCHROM

*Company - - - Limited*

(Associated with HAYCOCK, CADLE & GRAHAM LTD.)

SPECIALISTS IN ALL BRANCHES OF ILLUSTRATED WORK

## LEADING FEATURES

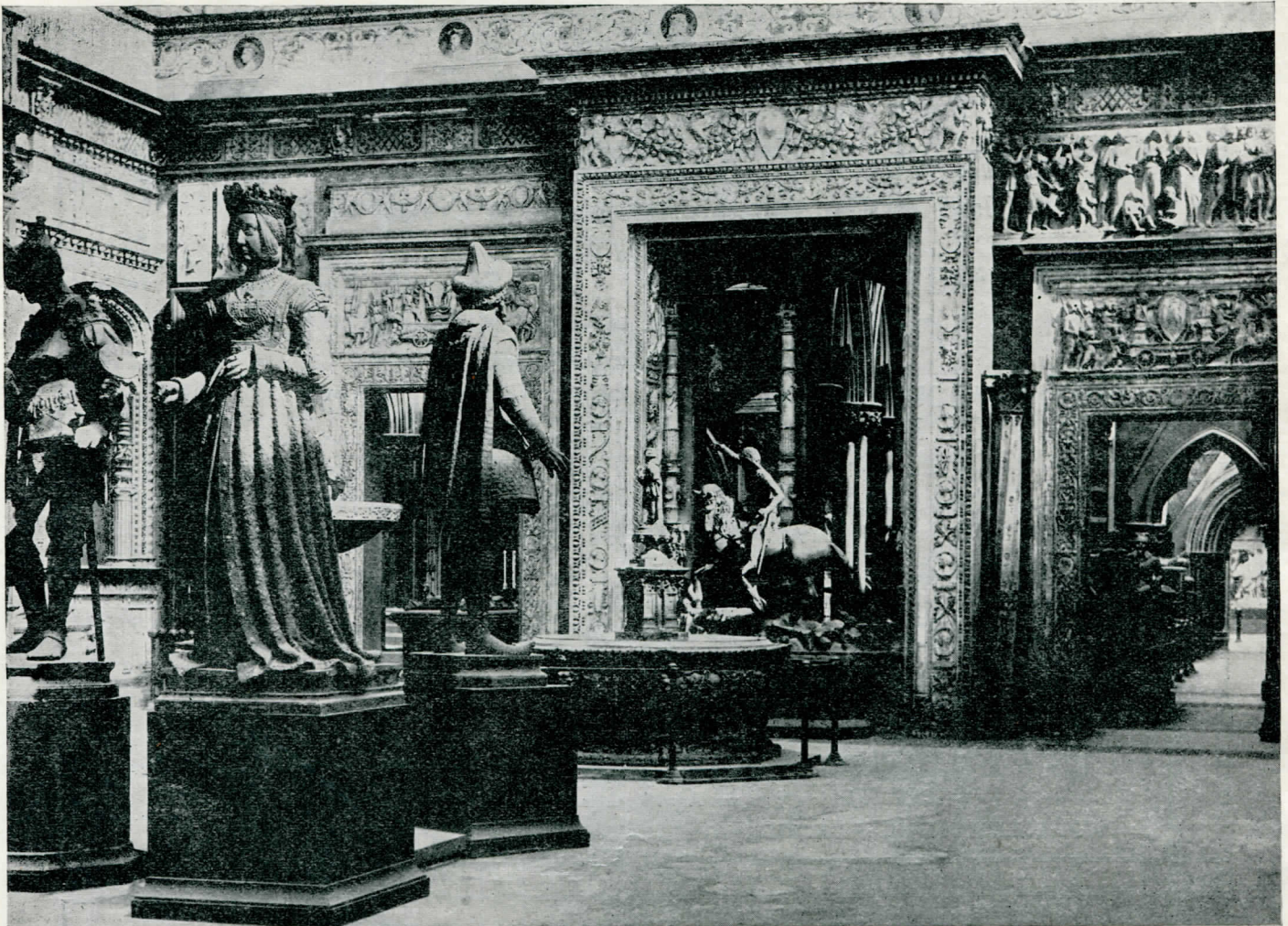
BOOKLETS . POSTERS . SHOWCARDS  
POSTCARDS . AND ALL STYLES OF  
PHOTOGRAPHIC REPRODUCTION.  
DESIGNS AND ESTIMATES  
SUBMITTED WITHOUT OBLIGATION

*London Offices* - - - 80 FLEET STREET, E.C. 4

*Works* - - - TUNBRIDGE WELLS, KENT

ADVERTISING  
CALENDARS FOR  
ALL TRADES ARE  
PRODUCED FROM  
STOCK DESIGNS  
IN QUANTITIES  
OF 100 UPWARDS





CRYSTAL PALACE. INTERIOR OF THE RENAISSANCE COURT. IN THE NORTH NAVE.

ENGAGEMENTS HAVE NOW  
BEEN COMPLETED FOR THE

**CRYSTAL PALACE**  
**GRAND CONTINENTAL**  
**CIRCUS**

COMMENCING  
**BOXING DAY, December 27th**

The Programme will include  
**THE MOST POPULAR**  
**CONTINENTAL ARTISTES**  
Many of whom will be appearing  
in England for the first time

## **SPECIAL NOTICE**

For the convenience of visitors to the National Band Festival, arrangements have been made to keep the Post Office open until after the awards have been announced. This information is not available until after the conclusion of the Evening Concert, and those desirous of utilising the facilities referred to, will be able to dispatch their communications from the Post Office adjoining the Main Entrance, either by telephone, telegram or letter.



THE  
PICTURE HOUSE  
CRYSTAL PALACE

*Will be re-opened on MONDAY, OCTOBER 3rd*

With the Screen Sensation of the age

**METROPOLIS**

DELIGHTFUL MUSIC—COMFORTABLE—SELECT

**Continuous Performance Daily 2.30 to 10.30**

Prices (including tax and admission to the Palace) 6d., 9d., 1/3 and 1/10

---

**THE KENNEL CLUB'S 66th  
OPEN CHAMPIONSHIP SHOW**

*SEPTEMBER 28th and 29th*

THE PREMIER DOG SHOW OF THE WORLD

5,800 entries

---

**THE CRYSTAL PALACE GRAND INTER-  
NATIONAL SHOW OF POULTRY, PIGEONS  
and RABBITS**

*NOVEMBER 15th, 16th and 17th*



# SOUTHERN RAILWAY

## WHERE THERE'S WARMTH AND SUNSHINE

---

Not everyone can afford to flee the rigours of Winter, but many can who don't! To them we suggest a trip this Winter—

THE RIVIERA—ITALY—SPAIN—  
EGYPT—NORTH AFRICA, etc.

Why not write for advice, and details of the  
S.R. de luxe Services, to the  
CONTINENTAL ENQUIRY OFFICE,  
VICTORIA STATION, LONDON, S.W.1?

---

S.R.—The Gateway to the Continent

---

Waterloo Station, S.E.1

H. A. WALKER, General Manager