

# The brass bands of Bristol and its suburbs

Gavin Holman, March 2026

Extracted from "Brass Bands of the British Isles 1800-2018 - a historical directory" (2018)



*Shaftesbury Crusade Silver Band, Bristol, 1924*

**Air Balloon Brass Band** (St George, Bristol) - *See: Air Balloon Hill Brass Band*

**Air Balloon Hill Brass Band** (St George, Bristol) - Active in 1891. Still active in 1904. Conductor George White in 1896-1902

**Air Balloon Hill Temperance Band** (St George, Bristol) - *See: Air Balloon Hill Brass Band*

**Albert Hall Brass Band** (Bristol) - Active in 1889 to 1890

**Albion Dockyard Silver Band** (Bristol) - Active from the 1940s until 1966 when it merged with the then Kingswood Hill Silver Band.

**Argyle Hall Brass Band** (Fishponds) - Active from the early 1890s to the late 1940s. Linked to the Argyle Hall Mission at Chester Park, Fishponds. Later known as Fishponds Argyle Brass Band. Conductor Mr Norman in 1897, W. Hemmens in 1903-1905. Possibly re-organised in 1903. Secretary F. Chappell in 1921. Took part in a festival of brass bands at the Colston Hall, Bristol in 1933.

**Ashley Vale Brass Band** (Bristol) - *See: Gatton Old Brass Band*

**ATC Bristol Wing Silver Band** (Bristol) - Active in 1959 to 1960

**Avon County Youth Brass Band** (Bristol) - Active in the 1970s/80s

**Avon School of Music Brass Band** (Bristol) - Formed in 1974 from a quartet,

**Avon Side Engineers' Brass Band** (Bristol) - *See: Avonside Ironworks Brass Band*

**Avon Street Gas Works Band** (Bristol) - *See: Bristol Gas Company Brass Band*

**Avonside Brass Band** (Bristol) - Active in 1878

**Avonside Ironworks Brass Band** (Bristol) - Active in 1860, 1861

**Band of Avon Fire and Rescue Service** - [Current band] - Founded in 1954 -  
Former names: Bristol Fire Brigade Brass Band

**Baptist Mills Wesleyan Brass Band** - *See: Bristol Baptist Mills Wesleyan Brass Band*

**Bedminster Artillery Band** - Active in the 1900s

**Bedminster Brass Band** - *See: Bedminster Silver Band*

**Bedminster Central Mission Brass Band** - Active in 1900, disbanded in 1904

**Bedminster Down Brass Band (1)** - Active in 1888. Still active in 1894. A successor band was formed in 1906

**Bedminster Down Brass Band (2)** - Founded around 1906, conductor Mr Parfitt.

**Bedminster Granville Silver Band** - Active in 1898

**Bedminster Imperial Band** - Active in the early 1900s.

**Bedminster Silver Band** - Active from 1880, conductor S. Hoare, through to the early 1900s. Conductor Fred Plucknett in 1895-1899. In 1905, they held a Grand Bazaar at Colston Hall in Bristol, following their fund-raising efforts during the Boer War.



*Bristol Gas Company Brass Band*

**Bedminster South Brass Band** - Active in 1894. Contemporary with the Bedminster Brass Band

**Bedminster White Cord Brass Band** - Active in 1882 to 1891. Conductor T. Reynolds in 1884, C. Ward in 1886. Associated with the White Cord Gospel Temperance Army

**Bedminster White Ribbon Brass Band** - *See: Bedminster White Cord Brass Band*

**Bendix Kingswood Band** (Bristol) - *See: Kingswood and District Band*

**Bethel Brass Band** (Bristol) - *See: Callowhill Street Mission Brass Band*

**Bethel Silver Band** (Bristol) - Active in 1930 - attached to the Bethel Evangelistic Society, Milk Street, Bristol.

**Brain's City of Bristol Brass Band** (Bristol) - *See: City of Bristol Brass Band*

**Brislington Amateur Brass Band** - *See: Brislington Brass Band*

**Brislington Brass Band** - Brislington is now a suburb of Bristol, but was formerly a rural village in North Somerset, which did not come fully into the Bristol Boundary until 1933. The Brislington Brass Band [usually known as "Tom Weymouth's Band"] was founded around 1860, or slightly earlier. Tom Weymouth was the bandmaster in the 1860s and was also landlord of 'The Pilgrim Inn' located at Hollywood Road, Brislington, it still stands today. Tom Weymouth took over the pub in 1862, and ran it, and the band until the 1890s, when both were taken over by his son also Tom. The band flourished until the 1910s, but Tom Jnr continued to run the Pilgrim until 1933. The band played at all local events, and there are local diaries from the 1860s noting that they went from house to house at Christmas and New Year's Eve. Notably they began the village celebrations for the Royal Wedding of the Princess of Wales [later Edward VII and Queen Alexandra] in 1863, by playing at the top of the tower of the parish church of St Luke's. They also played regularly at Bristol Zoo, at some time, and played at the opening of Clifton Suspension Bridge in Bristol in 1864. It is also believed that the Band played when the Keynsham [a near neighbour village] Mummers performed in Brislington. When Brislington's first public park [King Edward VII's Pleasure Grounds] was opened in 1903 a band stand was presented by Miss Annette Clayfield-Ireland, sister of Alfred Clayfield-Ireland the 'Squire of Brislington' of Brislington Hall. Sadly both park and bandstand have long since been covered by modern housing.



*Bristol Imperial Prize Band*

**Brison and Co.'s Brass Band** (Bristol) - *See: Messrs Walter and Brison's Brass Band*

**Brison's Brass Band** (Bristol) - *See: Messrs Walter and Brison's Brass Band*

**Bristol 1 Citadel Band** – Salvation Army band, active in the 1900s

**Bristol 6 Citadel Band** – Salvation Army band, active in the 1900s

**Bristol 7 Citadel Band** – Salvation Army band, active in the 1900s

**Bristol Aero Works Band** (Bristol) - *See: Bristol Aeroplane Company Works Band*

**Bristol Aeroplane Company Works Band** (Bristol) - Formed 1939 and still active in the early 1950s. Conductor T. Yabsley in 1939. Alwyn G. Lloyd

**Bristol Aircraft Company Works Band** (Bristol) - *See: Bristol Aeroplane Company Works Band*

**Bristol Alkali Works Band** - Active in 1864, when they took part in the processions celebrating the official opening of the Clifton Suspension Bridge in Bristol.

**Bristol Amateur Brass Band (1)** - Active in 1846

**Bristol Amateur Brass Band (2)** - Founded in October 1859. Renamed Bristol and Gloucestershire Brass Band in 1861. Took part in the processions celebrating the official opening of the Clifton Suspension Bridge in Bristol in 1864, conducted by Mr Payne. Conductor Mr Smith in 1866

**Bristol and Clifton Brass Band** - Active in 1854. Still active in 1889. Conductor Mr Wilcocks in 1864, Fred Watts in 1889

**Bristol and District N.U.R. Band** - Active in the 1920s and 1930s. Competed in the Crystal Palace Championships in the 1930s

**Bristol and Exeter Railway Carriage Department Brass Band** (Bristol) - *See: Bristol and Exeter Sheds Operatives Brass Band*

**Bristol and Exeter Sheds Operatives Brass Band** (Bristol) - Active in 1859 to 1864



*Crofts End Mission Band*

**Bristol and Gloucestershire Brass Band** - *See: Bristol Amateur Brass Band (2)*

**Bristol and Somerset Brass Band** - Active in 1877. Taking part in a procession in Portishead in 1878

**Bristol Argyle Hall Brass Band** - *See: Argyle Hall Brass Band*

**Bristol Baptist Mills Wesleyan Brass Band** (Baptist Mills) - Active in 1890. Still active in 1896. Conductor H. Langley in 1891-1892. Associated with the Brookland Independent Wesleyan Chapel at Ashley Road, Baptist Mills

**Bristol Blind Asylum Brass Band** - Active in 1855, 1861

**Bristol Britannia Temperance Brass Band** - Active from the early 1890s to the early 1900s - for a time it was known as the 3rd Volunteer Gloucester Regiment Band. Also known as Mardon's Band - it was organised by Mardon, Son and Hall Ltd, a Bristol printing firm. Secretary Mr Wilson in 1896. Associated with St Luke's Church. Members in 1901 included: Eli Bekeney

**Bristol Castle Good Templar Brass Band** - Active in 1883, conductor D. Bolton. Associated with the Bristol Castle Lodge of the I.O.G.T.

**Bristol Catholic Total Abstinence and Temperance Association Brass Band** - Founded in November 1863, conducted by U. Richardson

**Bristol Central Brass Band** - *See: Bristol Centre Brass Band*

**Bristol Central Mission Brass Band** - Formed in 1890 by a group of instrumentalists who attended the Old King Street Wesleyan Bible Class. Later known as the Bristol YMCA Brotherhood Band, Ebenezer Brotherhood Band, Bristol Victoria Silver Band (from 1907). Conductor in 1907, Mr Allsop. Members in 1901 included: J. Wilkinson. It folded in April 2009. [Further information - see: Fowler, EG - The Bristol Victoria Band - 1990]

**Bristol Central Mission Wesleyan Band** - *See: Bristol Central Mission Brass Band*

**Bristol Centre Brass Band** - Active in 1885. Still active in 1887



*Greenway's Band, Downend*

**Bristol Church Lads' Brigade Brass Band** - Founded in December 1902. Still active in 1903. Associated with the "Temple" Company of the C.L.B.

**Bristol Citizens' Recruiting Brass Band** - Active in 1915

**Bristol City Brass Band** - Founded in the mid-1880s by ten players from the Wombwell Band. Still active in 1900. Also known as Bristol City Promenade Brass Band. The band members were fined 5s each in 1890 for "using noisy instruments at night" in Broad Street

**Bristol City Football Band** - *See: Bristol South Brass Band*

**Bristol City Mission Band** - *See: Bristol Central Mission Brass Band*

**Bristol City Promenade Brass Band** - *See: Bristol City Brass Band*

**Bristol East and Kingswood Band** - [Current band] - Founded in 2007 - Note: Formed by the amalgamation of the Bristol East Band and the Kingswood (Bristol Band)

**Bristol East Brass Band (1)** - Active in 1890, associated with the Independent Wesleyan Chapel at Baptist Mills

**Bristol East Brass Band (2)** - *See: Bristol East Temperance Band*

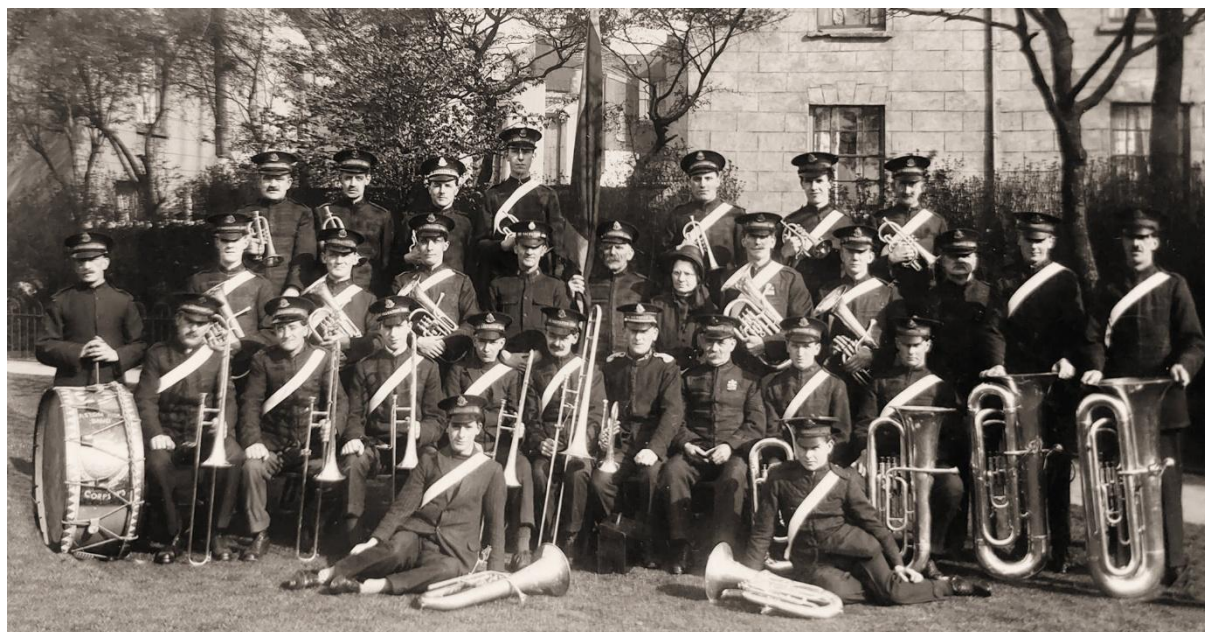
**Bristol East Temperance Band** - Formed in 1892 as Bristol East Temperance Band by George William White for the miners in the locality. The White family, widely known in East Bristol, were heavily involved from the beginning in conducting, teaching, playing and administering the Band's affairs. Took part in a festival of brass bands at the Colston Hall, Bristol in 1933. Later known as Bristol East Brass Band. Amalgamated with the Kingswood (Bristol) Band in 2007 to form Bristol East and Kingswood Band.

**Bristol Easton Corps Salvation Army Band** – Active in the 1920s

**Bristol Ebenezer Brotherhood Band** - *See: Bristol Central Mission Brass Band*

**Bristol Eclipse Brass Band** - Active in 1892

**Bristol Engineers' Brass Band (1)** - Founded in 1857. Still active in 1870. Conductor U. Richardson in 1860



*Bristol Easton Corps Salvation Army Band*

**Bristol Engineers' Brass Band (2)** - *See: Bristol Volunteer Engineers Brass Band*

**Bristol Excelsior Brass Band** - Active in the early 1900s. Still active in 1905

**Bristol Fire Brigade Brass Band** - *See: Band of Avon Fire and Rescue Service*

**Bristol Gas Company Brass Band** - Formed in April 1860, conductor J.C. (J.O.)

Brooke. Members were in the employment of the Bristol United Gas Company at the St Philip's Gas Works, Avon Street. Still active in the 1890s. Also known as the Avon Street Gas Works Band. Conductor Herr Wintermere in 1865

**Bristol Gas Works Brass Band** - *See: Bristol Gas Company Brass Band*

**Bristol Gatten Road Mission Band** - Active in the early 1900s

**Bristol Good Templars Brass Band** - Founded in 1886, conductor H. Miller.

Associated with the I.O.G.T. "George Thomas" lodge 180.

**Bristol Gospel Mission Brass Band** - *See: Bristol Gospel Temperance Brass Band*

**Bristol Gospel Temperance Blue Ribbon Brass Band** - *See: Bristol Gospel Temperance Brass Band*

**Bristol Gospel Temperance Brass Band** - Active in 1882, conductor Mr Burgess. Still active in 1890. Conductor G. Everson in 1885, H. Poole in 1889. Secretary G. Trout in 1890

**Bristol Hall of Freedom Mission Brass Band** - Founded in 1887. Active through to the 1920s. Conductor Mr Bigwood in 1890, Mr Nobbs in 1897, C. Moulding in 1900. Members of the band in March 1897 included E. Watts (trombone), Mr Cozens, J. Bolt, W. Mills and G. Mills

**Bristol Imperial Prize Band** - Active in the early 1900s through to the 1930s. S. Withy played trombone in 1904

**Bristol King Square Brass Band** - *See: Messrs James Smith and Sons' Brass Band*

**Bristol Loyal St George Band** - *See: Bristol St George's Brass Band*

**Bristol Lunatic Asylum Brass Band** (Stapleton) - Active in 1871

**Bristol Mechanics Amateur Brass Band** - *See: Bristol Mechanics Brass Band*

**Bristol Mechanics Brass Band** - Active in the 1850s to 1870s. Conductor J. Speare in 1865



*Unknown band, Bristol*

**Bristol Mechanics Total Abstinence Brass Band** - *See: Bristol Mechanics Brass Band*

**Bristol Military Brass Band** - Active in 1905

**Bristol Milk Street Silver Band** - Active in 1907 to 1912. Possibly linked to the Methodist church located there (the street no longer exists).

**Bristol Mission Prize Band** - *See: Bristol Central Mission Brass Band*

**Bristol N.F.S. (Area 17) Brass Band** - Active in the 1940s - disbanded around 1951.

**Bristol N.U.R. Band** - *See: Bristol and District N.U.R. Band*

**Bristol North Reed and Brass Band** - Active in 1891

**Bristol Old King Street Wesleyan Band** - *See: Bristol Central Mission Brass Band*

**Bristol Old Market Street Band** - *See: Bristol Temperance Brass Band*

**Bristol Police Brass Band** - Active in 1879, conductor T. Glover, bandmaster Mr Mortimer (police constable). Still active in 1888

**Bristol Post Office Brass Band** - Formed in 1884, first public appearance on Sunday 16th November 1884. Still active in 1936. A fund was set up in 1883, administered by W.H. Gange, by public subscription to start the band, which had raised over 100 pounds by September that year. Another report gives disbanding in 1902, but it must have revived again fairly quickly.

**Bristol R.A.M.C. Band** - Formed in 1909, conductor A. Wakefield

**Bristol Red, White and Blue Ribbon Army Brass Band** - Active in 1881, conductor D. Boulton. Still active in 1887

**Bristol Redland Park Hall Band** - *See: Redland Park Brass Band*

**Bristol Rupert Street Band** - Active in 1912

**Bristol Shoemakers' Brass Band** (Bristol) - *See: Messrs James Smith and Sons' Brass Band*



*Bristol Central Mission Prize Brass Band*

**Bristol South Brass Band** - Active in 1891. Conductor G.A. Godfrey in 1891-1901. Secretary George F. Saunders in 1897. Still active in 1936.

**Bristol South Military Band** - *See: Bristol South Brass Band*

**Bristol St George's Brass Band** - Active in 1878 through to WW1. Conductor G. Sloper in 1888, W. Truscott in 1899, Mr Morgan in 1890. Known as Loyal St George Brass Band, and St George's Enterprise Brass Band in 1912

**Bristol St John Ambulance Brass Band** - Active in the 1900s to the 1940s. Conductor T. Cozens in 1937, G. W. Yabsley in 1948

**Bristol Temperance Brass Band** - Active from 1860, conductor Mr Trueman. Conductor Mr Hancock in 1888. Active through to WW1. Known as Bristol Old Market Street Band from 1902

**Bristol Temperance Mechanics Brass Band** - *See: Bristol Mechanics Band*

**Bristol Training Ship Brass Band** - Active in the 1890s

**Bristol Union Brass Band** - *See: Bristol Workhouse Schools Brass Band*

**Bristol University Brass Band** (Bristol) - [Current band] - Active from 2015

**Bristol Veterans Band** - [Current band] - Founded in 1993 by retired bandmen, with the idea of entertaining senior citizens in Homes and Clubs. Originally part of the Crofts End Mission Band, becoming independent in 2000 and was re-named Bristol Veterans' Brass.

**Bristol Victoria Silver Band** - *See: Bristol Central Mission Brass Band*

**Bristol Volunteer Engineers Brass Band** - Active in the 1890s. Still active in 1904

**Bristol Volunteer Rifle Corps Band** - Active in the 1860s

**Bristol Wesleyan Mission Brass Band** - Founded in June 1893

**Bristol Workhouse Brass Band** - *See: Bristol Workhouse Schools Brass Band*

**Bristol Workhouse Schools Brass Band** - Active in 1861 to 1882

**Bristol Y.M.C.A. Brass Band (1)** - *See: Bristol Central Mission Brass Band*

**Bristol Y.M.C.A. Brass Band (2)** - Active in 1908

**Bristol Y.M.C.A. Brotherhood Brass Band** - *See: Bristol Central Mission Brass Band*



*Bristol Post Office Band*

**Bristol Youth Brass Band** - Active in the 1950s through to the late 1970s.  
Conductor Mike Bolhovener in the 1970s

**Britannia Brass Band (Bristol)** - *See: Bristol Britannia Temperance Brass Band*

**Britannia Prize Brass Band (Bristol)** - *See: Bristol Britannia Temperance Brass Band*

**Britannia Temperance Band (Bristol)** - *See: Bristol Britannia Temperance Brass Band*

**Brookland Wesleyan Brass Band (Baptist Mills)** - *See: Bristol Baptist Mills Wesleyan Brass Band*

**Brooklyn Brass Band (Bristol)** - Active in 1895

**Callowhill Street Mission Brass Band (Bristol)** - Active in 1884, conductor Mr Trout. Still active in 1903. Associated with the People's Bethel Mission located in Callowhill Street. Secretary H. Draper in 1890

**Canon's Marsh Gas Works Band (Bristol)** - Active in April 1864, when they gave a concert in the Broadmead Rooms

**Canyngge Amateur Brass Band** (Bristol) - Active in 1878, 1879

**Castle Green Brotherhood Brass Band** (Bristol) - Active in 1914

**Chapman's Excelsior Brass Band** (Bristol) - Active in 1885

**City Mission Band** (Bristol) - *See: Bristol Central Mission Brass Band*

**City of Bristol Brass Band (1)** - Active in 1858. Conductor Mr Paine in 1865, C. Wilson in 1883. Took part in the processions celebrating the official opening of the Clifton Suspension Bridge in Bristol in 1864. Still active in 1883. A successor City of Bristol Band was formed in 1936

**City of Bristol Brass Band (2)** - [Current band] - Founded in 1936 by H.S. Perry and W.G. Cozens - Former names: Fishponds British Legion Band (to early 1970s). Conductor Alwyn Lloyd in 1949-1961

**Clifton Promenade Brass Band** (Bristol) - Founded in 1894 by bandmaster George Webb. Still active in 1895. It was a semi-professional band which was largely engaged to play at the Bristol Zoological Gardens



*Fishponds Salvation Army Band, 1904*

**Clifton Public Band** (Bristol) - Active in the early 1900s

**Clifton Subscription Brass Band** (Bristol) - Active in 1851

**Clifton Wood Industrial School Brass Band** (Bristol) - The Clifton Industrial School was established in 1849 and moved to the former parish workhouse premises at Clifton Wood in 1866. The band was formed some time after 1870, and in 1896 it consisted of 28 performers. Conductor John Williams in 1882. Still active in 1903

**Clowes Brass Band** (Bristol) - *See: Clowes Primitive Methodist Brass Band*

**Clowes Primitive Methodist Brass Band** (Bristol) - Active in 1893, 1894

**Cobleys' Brass Band** (Bristol) - *See: Messrs Cobleys' Brass Band*

**Coombe Dingle Band** (Bristol) - Active in 1910

**Cossham and Wethered's Brass Band** (Bristol) - *See: Kingswood Colliery Brass Band*

**Cremorne Brass Band** (Bristol) - Active in 1879

**Crofts End Mission Silver Band** (Bristol) - [Current band] - Founded in 1907

**Derham's Brass Band** (Bristol) - *See: Messrs Derham Brothers' Brass Band*

**Downend Brass Band** - Founded in 1854. Active through to the 1930s. Took part in the processions celebrating the official opening of the Clifton Suspension Bridge in Bristol in 1864. Conductor C. Greenway in 1864-7, W. Davies in 1881, James Punter in 1881-1903, and A. Smith in 1927. In 1894 it took part in a temperance procession at Downend on July 11th. Also known as Greenway's Brass Band or Greenway's Brass and Reed (Downend) Band. Band members in 1926 included Percy Bracey, Mr. Hale, H. Sevier, T. Sparkes, Mr. Parker, H. Stiddard, W. Sevier, A. Smith, B.M.R. Hook, T. Toghill, Herbert Sevier and William Adams.

**Downend Young Brass Band** - Active in 1875, conductor T. Bracey

**Earl Street Mission Brass Band** (Bristol) - Active in 1891, performing at the Old King Street Wesleyan Chapel in June. This was a Wesleyan brass band. Still active in 1896

**East Bristol Brass Band** - Active in 1886 to 1891. Conductor Mr Jones in 1888

**East Bristol Temperance Band** - *See: Bristol East Temperance Band*

**East Street Mission Brass Band** (Bristol) - Active in 1894

**Easton Brass Band** - Active in 1888, bandmaster Mr Killard. Still active in 1892. Conductor Mr Radnedge in 1892



*Kingswood Evangel Silver Band, 1922*

**Easton Mission Brass Band** (Bristol) - Active in 1886

**Ebenezer Brotherhood Band** (Bristol) - *See: Bristol Central Mission Brass Band*

**Eclipse Brass Band** (Bristol) - *See: Bristol Eclipse Brass Band*

**Finzel and Company's Brass Band** (Bristol) - *See: Messrs Finzel and Company's Brass Band*

**Fishponds and Kingswood Temperance Brass Band** (Bristol) - Active in 1883

**Fishponds and Kingswood United Gospel Temperance Brass Band** (Bristol)  
- *See: Fishponds and Kingswood Temperance Brass Band*

**Fishponds Argyle Brass Band** - *See: Argyle Hall Brass Band*

**Fishponds Brass Band** (Bristol) - Active from the early 1860s to the early 1900s.

**Fishponds British Legion Band** - *See: City of Bristol Brass Band*

**Fishponds House Boot & Shoe Factory Brass Band** (Fishponds) - Active in 1862, conductor J. Briggs. The factory was owned by Henry Collyer Massingham, who was very interested in the welfare of his large workforce. He started brass and fife bands for the men, buying all the instruments himself and paying the bandmasters.

**Fishponds Salvation Army Band** (Bristol) - Active in the early 1900s.

**Frenchay Brass** - [Current band] - Founded in 2007

**Gatton Old Brass Band** (Bristol) - Active in the 1890s and 1900s. Renamed Ashley Vale Band in 1904.

**Gatton Road Mission Brass Band** (Bristol) - Active in 1903

**George Thomas Brass Band** (Bristol) - Active in 1887, conductor J.C. Jelly

**Glenville Mission Brass Band** (Bristol) - Active in 1894

**Gospel Temperance Blue Ribbon Brass Band** (Bristol) - Active in 1885, conducted by G. Everson

**Great Eastern Brass Band** (Bristol) - Active in 1866 into the 1880s. Conductor Thomas Bigwood/Bidgood in 1875. In 1888 the band owed £16 for instruments and was desirous to obtain new uniforms at a cost of another £20.

**Great James Street Mission Brass Band** (Bristol) - Active in 1891

**Greenslade's Brass Band** (Bristol) - *See: Messrs E.A. and W. Greenslade's Brass Band*



*Unknown band, Bristol*

**Greenway's Brass Band** - *See: Downend Brass Band*

**Grenville Brass Band** (Bristol) - *See: Grenville Mission Brass Band*

**Grenville Mission Brass Band** (Bristol) - Active in the early 1890s through to the 1900s

**Hall of Freedom Mission Brass Band** (Bristol) - *See: Bristol Hall of Freedom Mission Brass Band*

**Hall of Freedom Silver Band** (Bristol) - *See: Bristol Hall of Freedom Mission Brass Band*

**Hanham Brass Band** - Active in 1854. Took part in the processions celebrating the official opening of the Clifton Suspension Bridge in Bristol in 1864. Leader Mr Painter in 1865-1867. Still active in 1867

**Hope Congregational Sunday School Boys' Brass Band** (Clifton, Bristol) - Founded in spring 1889

**Hope Sunday School Brass Band** (Bristol) - Active in 1890. The school was located in Clifton

**Jam Factory Brass Band** (Bristol) - Active in 1894

**James Smith and Sons' Brass Band** (Bristol) - *See: Messrs James Smith and Sons' Brass Band*

**King Street Wesleyan Bible Class Band** (Bristol) - *See: Bristol Central Mission Brass Band*



*Royal Naval Volunteer Band (Bristol Division)*

**Kingswood (Bristol) Band** (Bristol) - *See: Kingswood and District Band*

**Kingswood Abbey Brass Band** (Bristol) - Active from the early 1900s to the 1940s

**Kingswood Amateur Brass Band** (Bristol) - Active in 1861

**Kingswood and District Band** (Bristol) - Formed in 1958. Later known as Potters Wood Kingswood Hill Bristol Silver Band (1960s), Kingswood (Potters Wood) Silver Band (1966), Bendix Kingswood Band (1976-2006), and Kingswood (Bristol) Band (to 2007). It amalgamated with the Albion Dockyard Silver Band in 1966 and then with the Bristol East Band in 2007 to form the Bristol East and Kingswood Band.

**Kingswood and Fishponds Temperance Brass Band** (Bristol) - *See: Fishponds and Kingswood Temperance Brass Band*

**Kingswood and Hanham British Legion Band** (Bristol) - Active in the 1940s and 1950s. Competed in the 2nd Annual Open Brass Band Festival at the Wesley Central Hall, Portsmouth (organised by the Portsmouth City Fire Brigade Prize Band), on Saturday 16th September 1950.

**Kingswood Bible Class Brass Band** (Bristol) - *See: Kingswood Wesleyan Brass Band*

**Kingswood Civil Defence Band** (Bristol) - Active in 1954

**Kingswood Colliery Brass Band** (Bristol) - Active in 1865, conductor W. Hardman. Cossham and Wethered were a company owning various coal mines in the Bristol area, including Kingswood Colliery

**Kingswood Evangel Mission Band** (Bristol) - *See: Kingswood Evangel Prize Silver Band*

**Kingswood Evangel Prize Silver Band** (Bristol) - Formed in 1881 to aid the work of the local Salvation Army, but when required to sign the SA Band Rules, in 1888, they declined and formed the Evangel Mission Band instead. Took part in the Winterbourne Carnival in 1923. Competed in the 2nd Annual Open Brass Band Festival at the Wesley Central Hall, Portsmouth (organised by the Portsmouth City Fire Brigade Prize Band), on Saturday 16th September 1950. Competed in the 1962 West of England Regional Championships, conducted by W.S. Smith. Probably folded in the 1960s. [Further information - see: Anon - Souvenir and History of the Kingswood (Bristol) Evangel Prize Silver Band - 1922]

**Kingswood Evangelist Mission Silver Band** (Bristol) - *See: Kingswood Evangel Prize Silver Band*

**Kingswood Gospel Temperance Mission Brass Band** (Bristol) - Active in 1884, 1885

**Kingswood Primitive Methodist Brass Band** (Bristol) - Active in 1884, disbanded in 1907. Leader J. Edwards in 1884



*Sunlife Band, Bristol, 1990*

**Kingswood Reformatory School Brass Band** (Bristol) - Active in 1878 through to 1905. The band had 25 performers in 1894 and was conducted by J. Bates. The school was opened and certified in 1854, eventually growing to 150 pupils.

**Kingswood School Brass Band** (Bristol) - *See: Kingswood Reformatory School Brass Band*

**Kingswood Sunday School Brass Band** (Bristol) - Active in 1860. Conductor J. Edwards in 1884. The school was attached to the Zion Free Methodist Chapel. Still active in 1884

**Kingswood Town Band** (Bristol) - Active in the early 1900s to 1930s. In 1933 it took part in a festival of brass bands at the Colston Hall, Bristol.

**Kingswood Wesleyan Brass Band** (Bristol) - Founded in August 1898, associated with the Kingswood Wesleyan Men's Bible Class. Still active in 1905. Conductor A. Harvey in 1899

**Kingswood Y.M.C.A. Band** (Bristol) - Active in the 1930s

**Knowle and Totterdown Brass Band** (Bristol) - Active in 1900

**Knowle Brass Band (1)** (Bristol) - Active in the early 1890s. Amalgamated with the Windmill Hill Brass Band in early 1898. Known as Knowle Brass Band thereafter



*Bedminster Silver Prize Band, Colston Hall, Bristol, 1905*

**Knowle Brass Band (2)** (Bristol) - Founded in 1898 by the merger of Knowle Brass Band and Windmill Hill Brass Band. Still active in 1902. Conductor Harry French in 1898

**Llewellyn and James' Brass Band** (Bristol) - Active in 1885. Still active in 1888. The company were brass foundrymen and machinists, located at Castle Green, manufacturing beer pumps, hose fittings, taps, copper milk-condensing tanks, hemispherical copper double-skinned pans used in jam-making, tar and bitumen spraying machines used for road maintenance etc

**Loyal St George Brass Band** - See: *Bristol St George's Brass Band*

**Lysaght's St Vincent's Brass Band** (Bristol) - Active in 1882, numbering "over 20 performers". Still active in 1894. Formed by men in the employ of Messrs Lysaght & Co. (a.k.a. J. Lysaght's), who were galvanising and sheet steel makers

**Mardon's Band** (Bristol) - See: *Bristol Britannia Temperance Brass Band*

**Messrs Brison and Co.'s Brass Band** (Bristol) - See: *Messrs Walter and Brison's Brass Band*

**Messrs Cobleys' Brass Band** (Bristol) - Active in 1886

**Messrs Cossham and Wethered's Brass Band** (Bristol) - *See: Kingswood Colliery Brass Band*

**Messrs Derham Brothers' Brass Band** (Bristol) - Active in 1864, when they took part in the processions celebrating the official opening of the Clifton Suspension Bridge in Bristol. Conductor Uriah Richardson in 1864-1865. Still active in 1868. Derham's were boot and shoe manufacturers

**Messrs E.A. and W. Greenslade's Brass Band** (Bristol) - Active in 1863. Greenslade's were brush manufacturers in Thomas Street.

**Messrs Finzel and Company's Brass Band** (Bristol) - Active in 1865, leaders Herr Pfeiffer and also George Rawbon. Conrad Finzel owned a large sugar refinery in the city. Still active in 1866



*Bristol Aero Works Band, 1952*

**Messrs James Smith and Sons' Brass Band** (Bristol) - Active in 1862. Still active in 1895. Also known as King Square Brass Band, Bristol Shoemakers' Brass Band. This was the works band of James Smith and Sons, boot and shoe manufacturers, 62, Castle Street, Bristol.

**Messrs S. Plenty and Son's Brass Band** (Bristol) - Active in 1875. Plenty & Sons operated the Great Western Tannery in Pennywell Road - and were fellmongers, tanners, leather dressers and woolstaplers

**Messrs Walter and Brison's Brass Band** (Bristol) - Active in 1861. Conductor U. Richardson in 1862. Walter & Brison manufactured brushes and bellows at their factory in Redcliff Street, and was established by John Parr Walter and Emmanuel Brison (the latter actually retired from the business in 1859). Took part in the processions celebrating the official opening of the Clifton Suspension Bridge in Bristol in 1864

**Messrs Waterman and Co.'s Brass Band** (Bristol) - Active in 1865 to 1869. Leader Joseph Lucas in 1865. Conductor J.O. Brooke in 1866. Waterman's were boot and shoe makers

**Messrs Wethered and Cossham's Brass Band** (Bristol) - *See: Kingswood Colliery Brass Band*

**Mount Zion Brass Band** (Bristol) - Active in the 1880s and 1890s. Conductor F. Plucknett in 1892

**Mr Brooke's Amateur Brass Band** (Bristol) - *See: Bristol Gas Company Brass Band*

**National Union of Railwaymen's (Bristol) Silver Band** - *See: Bristol and District N.U.R. Band*

**North East Bristol Temperance Brass Band** - Active in 1895 - associated with the North East Bristol Temperance Society

**Old King Street Wesleyan Brass Band** (Bristol) - *See: Bristol Central Mission Brass Band*



*Staple Hill Salvation Army Band*

**Old Market Street Men's Bible Class Brass Band** (Bristol) - Active in 1900. Associated with the Old Market Street Sunday Morning Lads' Bible Class

**Owen Street Brass Band** (Bristol) - Active in 1884 to 1888. Associated with the Owen Street Mission in Easton

**Parkfield Colliery Band** (Bristol) - Active in 1863

**Parnall and Sons' Brass Band** (Bristol) - Founded in 1882, conductor Charles Palmer. Still active in 1883. Consisted of joiners in the employ of Messrs Parnall & Sons Ltd, shop fitters, of Narrow Wine Street. In the 1880s it was the largest shop fitting company in England, going on to manufacture aircraft during WW1.

**People's Bethel Mission Brass Band** (Bristol) - *See: Callowhill Street Mission Brass Band*

**People's Mission Brass Band** (Bristol) - *See: Callowhill Street Mission Brass Band*

**Phoenix Temperance Brass Band** (Bristol) - Active in 1897. Rehearsed at 5 Old Bread Street on Tuesday and Thursday evenings.

**Plenty and Son's Brass Band** (Bristol) - *See: Messrs S. Plenty and Son's Brass Band*

**Potters Wood Kingswood Hill Bristol Silver Band** (Bristol) - *See: Kingswood and District Band*

**Red, White and Blue Ribbon Army Brass Band** (Bristol) - *See: Bristol Red, White and Blue Ribbon Brass Band*

**Redland and Westbury Brass Band** (Bristol) - Active in 1876 to 1880

**Redland Brass Band** (Bristol) - Founded in 1861, rehearsing at St John's Schoolroom, Durdham Down on Monday evenings, 8 to 10. In 1864 they took part in the processions celebrating the official opening of the Clifton Suspension Bridge in Bristol. Still active in 1868



*Bristol VI Citadel Salvation Army Band*

**Redland Park Brass Band** (Bristol) - Active in 1891, conductor S. Rootham. Still active in 1902. Conductor E.G. Cooper in 1894

**Redland Park Hall Brass Band** (Bristol) - *See: Redland Park Brass Band*

**Redland Park Working Men's Brass Band** (Bristol) - *See: Redland Park Brass Band*

**Redland Tradesmen's Brass Band** (Bristol) - Founded in early summer 1867, with 20 players, instructor G. Buckland.

**Royal Naval Volunteer Band (Bristol Division)** – Active in the 1900s.

**Shaftesbury Crusade Silver Band** (Bristol) - Possibly active in the early 1900s and 1920s. Active in the 1960/70s. They were Championship Section in the late 1970s and came in the top 4 in the National Finals. By the end of the 70s the band had lost a lot of players to Sun Life and Soundwell the two main top section bands in Bristol at that time. The band folded in early 1980s.

**Sons of Phoenix Brass Band** (Bristol) - Active in 1894

**South Gloucestershire Brass Band** (Bristol) - Active in 1875

**St Agnes Brass Band** (Bristol) - *See: St Agnes Mission Brass Band*

**St Agnes Church Army Brass Band** (Bristol) - Active in 1892, conductor Mr Watts

**St Agnes Mission Brass Band** (Bristol) - Active in 1884, conductor Mr Archard. In 1894 it took part in a temperance procession at Downend on July 11th, conductor Mr Archard.

**St Anne's Adult School Brass Band** (Bristol) - Active in 1914

**St George's Brass Band** (Bristol) - *See: Bristol St George's Brass Band*

**St George's Enterprise Brass Band** (Bristol) - *See: Bristol St George's Brass Band*

**St John Ambulance Band** (Bristol) - *See: Bristol St John Ambulance Brass Band*

**St Jude's Brass Band** (Bristol) - Active in 1881, conductor Mr Ashman. Belonged to the St Jude's branch of the Red, White and Blue Ribbon Army

**St Jude's City Mission Brass Band** (Bristol) - Active in 1894, 1895

**St Luke's Britannia Temperance Brass Band** (Bristol) - *See: Bristol Britannia Temperance Brass Band*



*Warmley Tower Excelsior Brass Band*

**St Paul's Brass Band** (Bristol) - Active in 1872

**St Philip's Gospel Temperance Brass Band** (Bristol) - Active in 1885, conductor G. Everson, based at the Cumberland Street Mission Hall

**St Vincent's Brass Band** (Bristol) - *See: Lysaght's St Vincent's Brass Band*

**Stanshawe (Bristol) Band** (Bristol) - *See: Stanshawe/Sun Life Band*

**Stanshawe Band** (Bristol) - *See: Stanshawe/Sun Life Band*

**Stanshawe/Sun Life Band** (Bristol) - The band was founded as the Stanshawe Band (1968) and modified its name to Stanshawe (Bristol) Band (1972). On receiving sponsorship from Axa Sun Life they changed again to Sun Life Stanshawe Band (1978) and finally to simply the Sun Life Band (1983). They disbanded in January 1997. [Further information - see: Anon - Sun Life: A Celebration of Sun Life Band's 20th Anniversary]

**Staple Hill Salvation Army Band** - Active in the 1890s through 1910s.

**Stapleton Brass Band** - Active in 1854. Took part in the processions celebrating the official opening of the Clifton Suspension Bridge in Bristol in 1864. Still active in 1900

**Stapleton Post Office Brass Band** - Active in 1887

**Stapleton Union Brass Band** - *See: Stapleton Workhouse Brass Band*

**Stapleton Workhouse Brass Band** - Active in 1859 to 1870. Some 300 of the children from the workhouse had an outing, preceded by their brass band, which was much admired. Also known as the Stapleton Union Brass Band

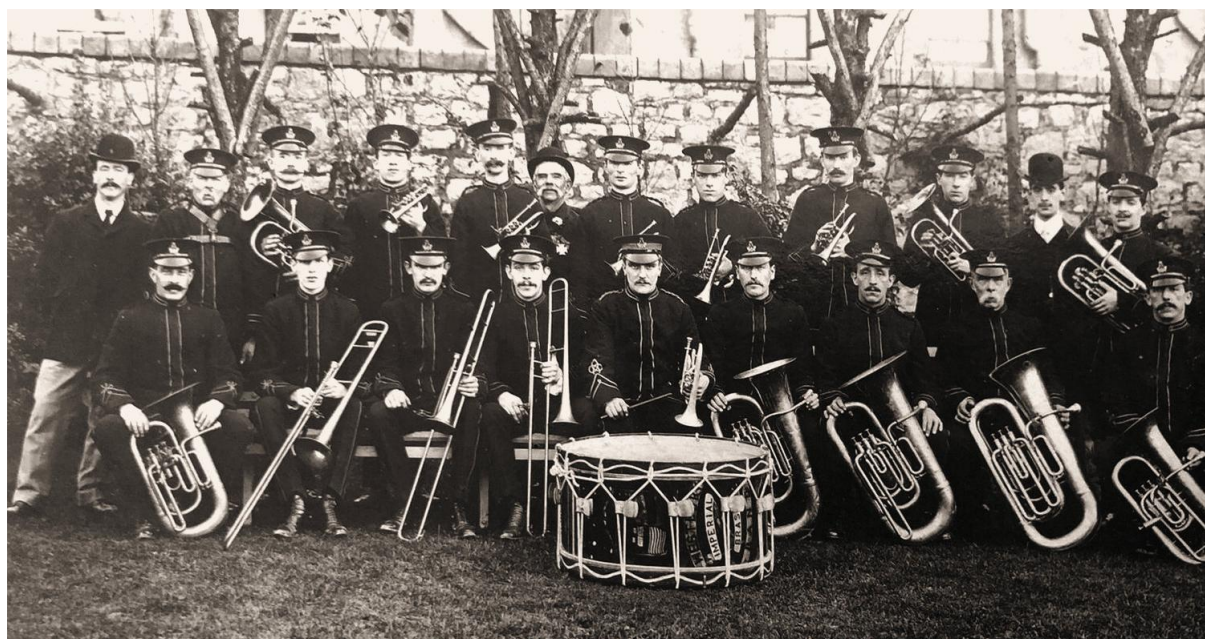
**Sun Life Band** (Bristol) - *See: Stanshawe/Sun Life Band*

**Sun Life Stanshawe Band** (Bristol) - *See: Stanshawe/Sun Life Band*

**Terrett's Memorial Brass Band** (Hotwells) - Formed in 1894, conductor W.H. Langley. It was linked to the Terrett Memorial Hall in Bristol, and was founded shortly after the gospel temperance mission was established there. It disbanded in 1902.

**Totterdown Brass and Reed Band** - *See: Totterdown Brass Band*

**Totterdown Brass Band** - Founded in 1888, conductor F. Griffin. Still active in 1902. Secretary J. Ford in 1897. Also known as Totterdown Brass and Reed Band in the late 1890s



*Westbury-on-Trym Imperial Brass Band*

**University of Bristol Brass Band** - *See: Bristol University Brass Band*

**Walter and Brison's Brass Band** (Bristol) - *See: Messrs Walter and Brison's Brass Band*

**Warmley Brass Band** - *See: Warmley Tower Brass Band*

**Warmley Excelsior Brass Band** - Active in the 1900s, conductor W. Norman.

**Warmley Military Band** - Founded 1903, as Warmley Mission Reed and Brass Band, by the men of the Warmley Independent Methodist Church, predominantly from the Mill Lane and Cadbury Heath area, many of whom were from the Lovell Family. Secretary L. Lovell in 1905. The Band had a membership of about twenty men, one of whom was George Webb, father of Bill Webb the cycle shop owner. The Warmley Military Band achieved a great deal in the world of music, a small dedicated band of men, whose fame spread to Minehead, Hereford and Berkeley, where they had regular engagements and the fact that the Band existed for 33 years is an achievement in itself. Perhaps their most frequent and enjoyable engagement was to lead the annual

Whitsuntide parades through surrounding villages. George Webb was born in 1842 and at the age of eight started his working life in a nearby coalpit. Inspired by the sounds of brass band music, he taught himself to play the cornet and at the age of thirteen he left the pit. George was now in his element. In a very short time he was able to 'triple tongue' on his cornet and was capable of producing 700 notes to the minute. In 1862, he was the star player of 'The Christie Minstrels'. From this time on he was often on tour but always returned to his roots where he had a wife and young family. Around 1882, George took part in a ceremony when the chimney stack at Haskins Pottery was heightened. When the chimney was completed George stood on the top run and played the National Anthem, God Bless the Prince of Wales and Auld Lang Syne. The cornet was not the only instrument George mastered as he was able to handle many instruments, particularly the trombone. His ability did not stop there as he also became bandmaster to numerous bands but, in particular, the Warmley Military Band. At the turn of the century George Webb had produced scores of compositions for brass bands and his name was familiar all around Britain as well as on the Continent. There is a story that the Black Dyke Mills Band were passing through Warmley station on their way to Bournemouth. They had persuaded the driver to stop the train so as they could meet their hero, George Webb. However, George had prepared a surprise for them and with the aid of a local brass band, the Black Dyke and Warmley Bands marched along the road, playing at full pitch and meeting in the middle of the village.

**Warmley Mission Band** - Active in 1901



*Bristol I Citadel Salvation Army Band*

**Warmley Mission Reed and Brass Band** - See: *Warmley Military Band*

**Warmley Reed and Brass Band** - See: *Warmley Military Band*

**Warmley Tower Brass Band** - Active in 1864, when they took part in the processions celebrating the official opening of the Clifton Suspension Bridge in Bristol. Still active in 1902. Conductor George Webb in 1870-1881, H. Carter

in 1894. Secretary James Pillinger in 1884. Winners of the first prize brass band contest at St George's, Bristol, in 1883. Presumed to have disbanded prior to the Excelsior Band forming in 1904

**Warmley Tower Excelsior Band** - Founded in 1904, conductor George Webb. Still active in 1922

**Waterman's Brass Band** (Bristol) - *See: Messrs Waterman and Co.'s Brass Band*

**Wellington Brass Band** (Bristol) - *See: Wellington Road Mission Brass Band*

**Wellington Road Mission Brass Band** (Bristol) - Active in 1891. Still active in 1899



*Bristol Citadel Salvation Army Band, Easter 1908*

**West Bristol Brass Band** (Westbury on Trym) - Active in 1886. Still active in 1905

**West of England Brass Band** (Bristol) - Active in 1864, conductor Mr Morrish

**Westbury and Redland Brass Band** (Bristol) - *See: Redland and Westbury Brass Band*

**Wethered and Cossham's Brass Band** (Bristol) - *See: Kingswood Colliery Brass Band*

**Whiteway Brass Band** (Bristol) - Active in 1861

**Windmill Hill Brass Band** (Bristol) - Active in the early 1890s. Amalgamated with the Knowle Brass Band in early 1898. Conductor W.S. Parsons in the mid-1890s, president Rev. A.E. Rose.

**Y.M.C.A. Brotherhood Brass Band** (Bristol) - *See: Bristol Y.M.C.A. Band*

**1st Bristol Boys' Brigade Brass Band** - Active in 1891, 1892. Associated with the 1st Boys' Brigade Company connected with the Hope Sunday Schools, Clifton

**1st Gloucestershire Artillery Band** (Bristol) - Active in the 1900s

**2nd Gloucestershire Volunteer Engineers Band** (Bristol) - Active in the 1860s

**3rd Volunteer Battalion Gloucester Regiment Band** - *See: Bristol Britannia Temperance Brass Band*

**9th Bristol Boys' Brigade Brass Band** - Active in 1894

**12th Gloucester Home Guard Brass Band** (Bristol) - Active during WW2